

# Let's Talk, Montana!

LATEST RESEARCH IN  
SUICIDE PREVENTION

CONTINUING EDUCATION  
UNITS

MAY 31, 2019

BILLINGS, MONTANA  
FIRST CONGREGATIONAL CHURCH

[www.mssce.com](http://www.mssce.com)

406.214.0029

**Continuing Education**  
**9 CE Units**  
**(BBH & OPI)**  
**Catered Lunch**  
**all for \$199!!**

Montana researchers  
present their work  
regarding suicide in  
Montana.

Montana Social Scientists, LLC is a state-registered, Renewal Unit Provider with OPI\* and a board-approved Continuing Education Provider for licensees registered through Montana's Board of Behavioral Health, LCSW, LAC, LMFT, LCPC

\*Montana's Board of Nursing accepts OPI CEUs if it pertains to your work.

# SPEAKERS



**Featured Speaker: Sarah N. Keller**, MS, Ph.D., Professor, Dept. of Communication & Theatre, Montana State University Billings, Billings, MT, USA, (406) 896-5824, [skeller@msubillings.edu](mailto:skeller@msubillings.edu). **Dr. Keller's** research revolves around health communication, narrative education and service learning. Her curriculum combines professional experiences from overseas entertainment education and health communication campaigns with local non-profits and student learning. Keller has been funded by the Montana Idea Network for Biomedical Research Excellence to evaluate community-based media projects for suicide prevention. Research on her campaigns has resulted in papers appearing in the Journal of Marketing Education, Nursing & Health Sciences, Journal of Advertising, Health Knowledge, Attitudes and Practices by Nova Press, and others. Her ongoing research agenda centers on examining the use of mass media to promote health behavior and attitude change on a variety of public health topics. Dr. Keller will present findings from her recently published article titled: "A Look at Culture and Stigma of Suicide: Textual Analysis of Community Theatre Performances."

**Dr. Dana West**, PhD., LCPC, NCC, Professor of School Counseling, Montana State University Billings, Billings, MT, USA, (406) 657-2345, [dana.west@msubillings.edu](mailto:dana.west@msubillings.edu). **Dr. West** has 30+ years presenting suicide prevention with QPR and counseling youth with suicidal issues in the schools. She has received advanced training in suicide assessment through QPR and recently became retrained and recertified as a Gatekeeper trainer. Her presentation is titled "Suicide Research Trends and Assessment" and will cover some recent changes in suicide prevention. Some of the topics covered are appropriate assessment vs. screening, the "rising tide of expectations" with regard to suicide prevention, and the wellness of the therapist dealing with suicidal clients.



**Lani Paulson**, MSPR, MS, ABD  
Doctoral student Social Psychology,  
*Let's Talk* Co-Author & Quantitative  
Researcher, Health Data Analyst with  
Rocky Mountain Tribal Leaders Council  
Epidemiology Center



**Michelle Anderson**, MS  
Owner of MI Consulting, Inc. and  
Adjunct Professor of Communications  
at Montana State University Billings.  
Michelle specializes in Trauma-  
Informed-Care.

**Jessica Mayrer**, Policy  
Coordinator, Vision 21:  
Linking Systems of Care  
(LSOC) for Children and  
Youth in Montana, Social  
Science Research Laboratory,  
University of Montana

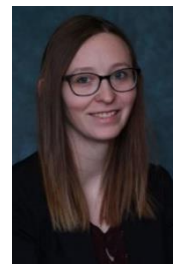


**Darla Tyler-McSherry**, MS Health &  
Human Performance Director, Student  
Health Services, Montana State  
University Billings, Visionary of **Ask  
in Earnest**, a website dedicated to  
suicide prevention for ranchers and  
farmers. [www.askinearnest.org](http://www.askinearnest.org)

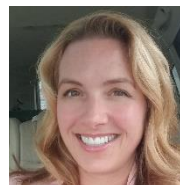


**Nathan Stahley** BS Business  
Management, Population Health  
Program Manager at RiverStone  
Health. Nathan manages Public Health  
initiatives including cancer control,  
tobacco prevention, and suicide  
prevention. He also chairs the [Suicide  
Prevention Coalition of Yellowstone  
Valley](#) and is a certified Gatekeeper Instructor in Question  
Persuade Refer (QPR).

**Sarah Music**, BS Health and Human  
Performance with emphasis in Health  
Promotion. Sarah is a Health  
Prevention Specialist for RiverStone  
Health, specializing in tobacco  
prevention and suicide prevention.  
Sarah also leads the Gatekeeper  
Training sub-committee of the [Suicide  
Prevention Coalition of Yellowstone  
Valley](#).



**Kamel Majouz**, A&E Architectural  
Designer, US Citizen, former Syrian  
refugee. Kamel will share his story of  
survival and resilience.



**Joy Honea, PhD**, Sociology  
Professor, MSUB, and recipient of  
Fullbright Scholarship to study  
suicide prevention in Finland.

# Agenda May 31

- 9:00 AM**     **Coffee and Check-In/Welcome & Introductions**  
Vanessa McNeill, M.S., Professor of Psychology MSUB, dba/Mt. Social Scientists, LLC
- 9:15 AM**     **Speaker:** Sarah Music & Nathan Stahley, Suicide Prevention Coalition of Yellowstone Valley
- 10:00 AM**     **Speaker:** Dana West, Professor of School Counseling, MSUB
- 11:00 AM**     **Speaker:** Michelle Lamberson, MI Consulting, Trauma Informed Care
- 12:00 PM**     **Working Lunch by *Mitzi Racine***
- 12:30 PM**     **Speaker:** Lani Paulson, PhD candidate, *Let's Talk* Quantitative Researcher & Co-Author and Health Data Analyst with Rocky Mountain Tribal Leaders Council Epidemiology Center
- 1:30 PM**     **Featured Speaker:** Sarah N. Keller, Professor of Communication, MSUB
- 2:30 PM**     **Speaker:** Jessica Mayrer, Vision 21: Linking Systems of Care, University of Montana
- 3:30 PM**     **Speaker:** Darla Tyler-McSherry, Director, Student Health Services, MSUB
- 4:30 PM**     **Speaker:** Joy Honea, Professor of Sociology, MSUB
- 5:15 PM**     **Speaker:** Kamel Majouz, A&E Architectural Designer, US Citizen, former Syrian refugee
- 6:00 PM**     Wrap-up, survey, and collect your ***Certificate of Completion*** for 9 CE units.

**To Register, call 406-214-0029 or visit us at our website**

**<http://montanasocialscientists.com/lecture-series/>**



Global Health  
Equity Foundation

research • advocacy • capacity building