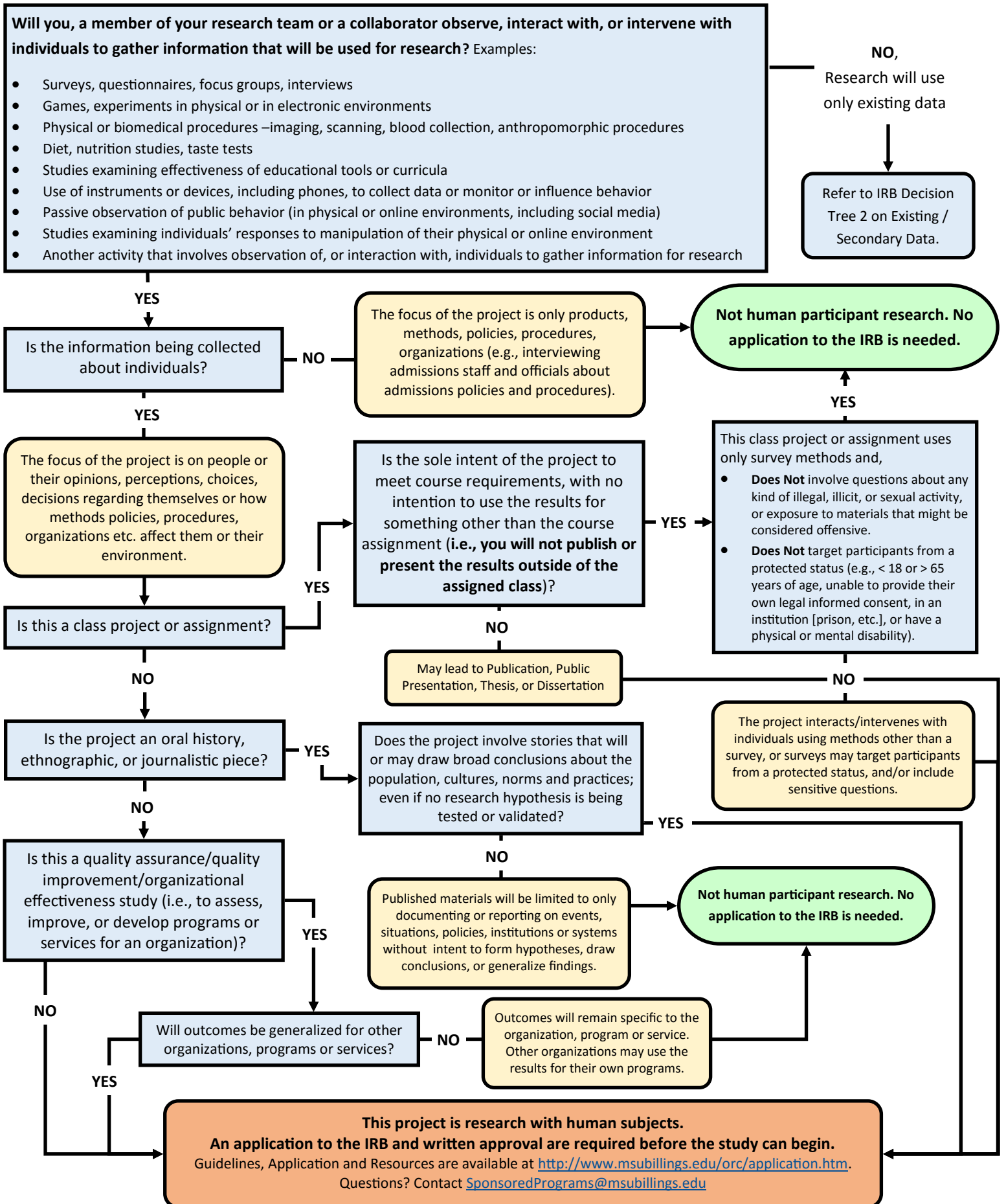


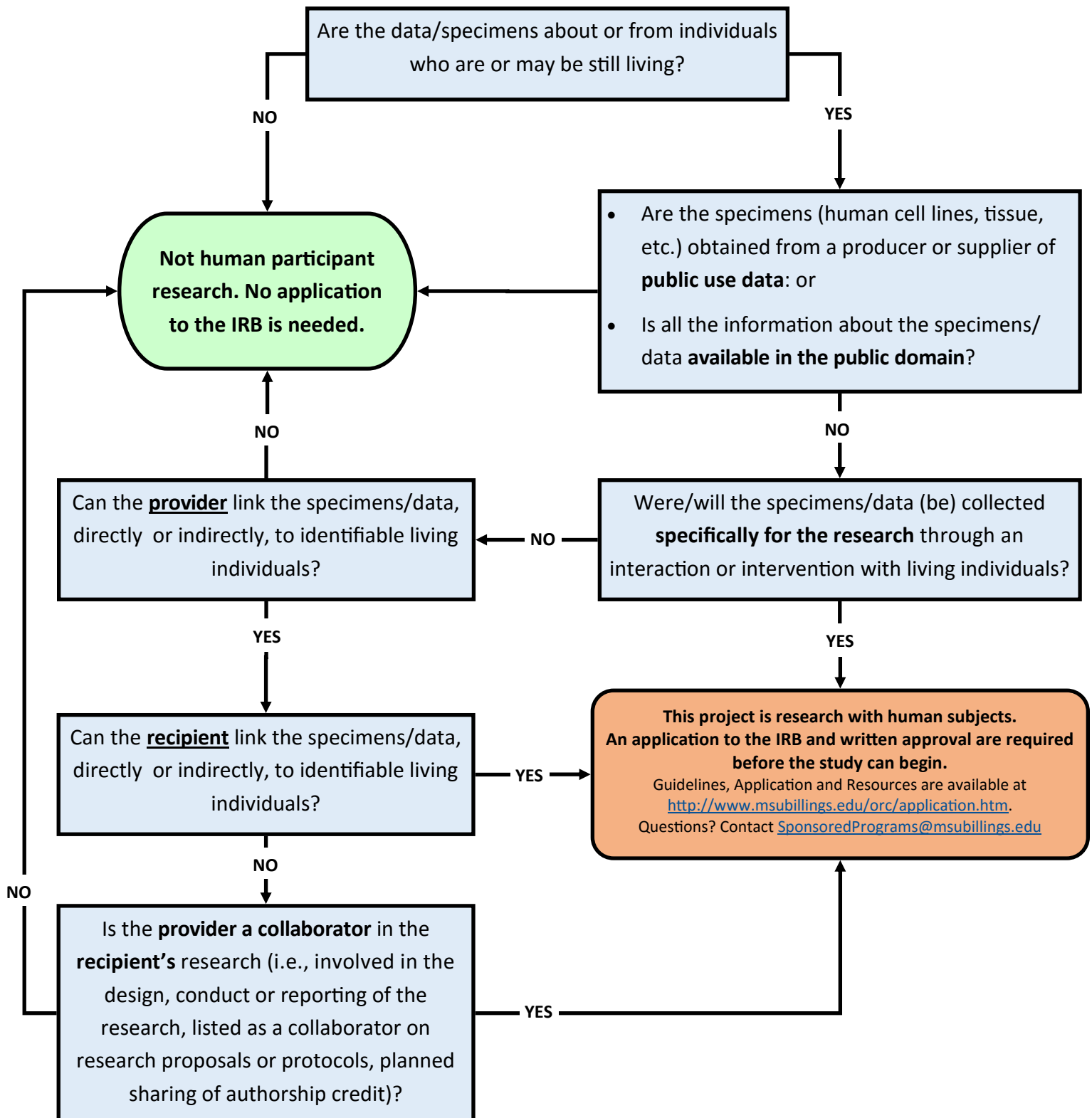
Does Your Project Require an Application to the MSUB's IRB?

Decision Tree 1



Does Your Project Involving Secondary or Existing Data, Documents or Biological Specimens Require Review by the MSUB's IRB?

Decision Tree 2



Contact MSU-Billings Office of Sponsored Programs (<http://www.msubillings.edu/grants/index.htm>) if acquiring the data/specimens requires a Data Use Agreement or Materials Transfer Agreement between the provider and recipient.