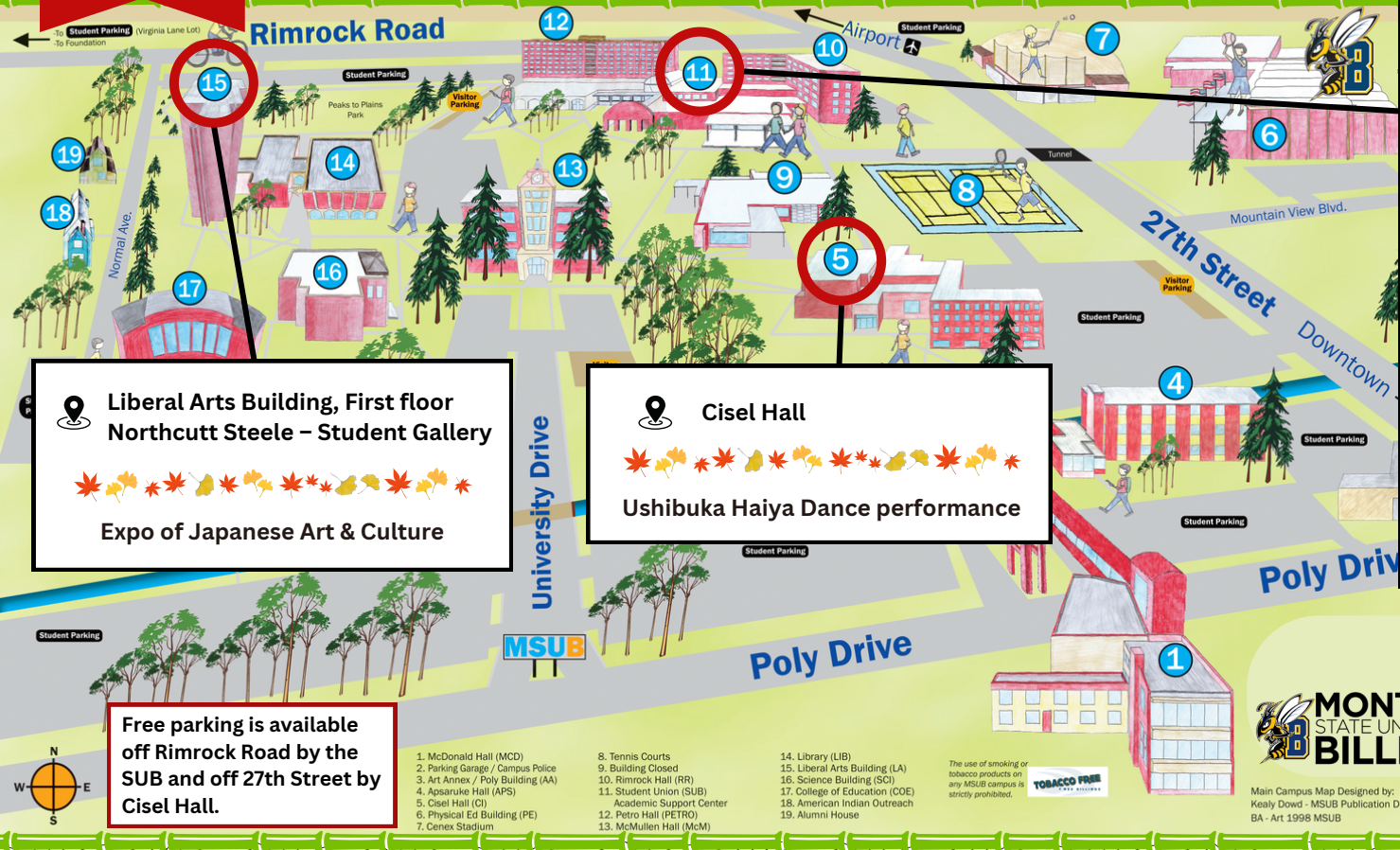


**SEP.
23RD**

JAPAN FESTIVAL MAP

Fall 2023
Global Studies Seminar



**Liberal Arts Building, First floor
Northcutt Steele – Student Gallery**

Expo of Japanese Art & Culture

Cisel Hall

Ushibuka Haiya Dance performance

- Student Union Building (SUB) / Lawn**
- Japanese calligraphy
 - Bonsai display/workshop
 - Origami crafts
 - Fan painting
 - Aikido demonstration
 - Sister-state relationship presentation
 - Tea ceremony
 - Samurai armor
 - Furoshiki workshop
 - JET program presentation
 - Japanese fairytale
 - Japan themed lunch
 - Ushibuka Haiya Dance workshop
 - Taiko performance

Free parking is available off Rimrock Road by the SUB and off 27th Street by Cisel Hall.

- | | | |
|-----------------------------------|-----------------------------|--------------------------------|
| 1. McDonald Hall (MCD) | 8. Tennis Courts | 14. Library (LIB) |
| 2. Parking Garage / Campus Police | 9. Building Closed | 15. Liberal Arts Building (LA) |
| 3. Art Annex / Poly Building (AA) | 10. Rimrock Hall (RR) | 16. Science Building (SC) |
| 4. Apparuke Hall (APS) | 11. Student Union (SUB) | 17. College of Education (COE) |
| 5. Cisel Hall (CI) | 12. Academic Support Center | 18. American Indian Outreach |
| 6. Physical Ed Building (PE) | 13. Petro Hall (PETRO) | 19. Alumni House |
| 7. Cenex Stadium | 13. McMullen Hall (McM) | |

MONTANA STATE UNIVERSITY BILLINGS

Main Campus Map Designed by:
Kealy Dowd - MSUB Publication Designer & Coordinator
BA - Art 1998 MSUB

THANK YOU TO OUR SPONSORS!

JAPAN FOUNDATION LOS ANGELES

International and Foreign Language program at the US Department of Education

FEATURED

USHIBUKA HAIYA DANCE & AMAKUSA SEAFOOD



Montana's longstanding sister-state relationship with Kumamoto Prefecture in southern Japan is supporting the Japan Festival in that Kumamoto Prefecture and Amakusa City provided funding for Japanese high school student dancers to travel to Billings to provide traditional dance performances and workshops, in addition to supplying fresh yellowtail and snapper to be served during the festival in Rimrock café. The fresh fish is limited to the first 100 servings, so don't miss out!



Ushibuka Haiya - Ushibuka High School Students



Amakusa Red Snapper

Amakusa Yellowtail

JAPAN FESTIVAL

SEP. 23RD

1 JAPANESE CALLIGRAPHY

Learn how to write Japanese characters with a brush and ink using one of Japan's most traditional and well-known art forms.

2-A BONSAI DISPLAY

2-B BONSAI WORKSHOP

Enjoy Billings Bonsai Club's bonsai collection and demonstration.

9 FUROSHIKI WORKSHOP

Learn about a traditional Japanese wrapping cloth, used for clothes and gifts.

11 JAPANESE FAIRYTALE READING

Listen to and learn about famous Japanese fairytales.

3 ORIGAMI CRAFTS

Explore the tradition of paper folding called origami.

4 FAN PAINTING

The Japanese folding hand fan, sensu, is a common summer tool to keep away the heat. Let's make your own sensu.

5 AIKIDO DEMONSTRATION

Mountain West Aikido will introduce and perform the Japanese martial art, Aikido.

6 SISTER-STATE RELATIONSHIP PRESENTATION

Erik Rose from World Montana will talk about the sister-state relationship between Montana and Kumamoto Prefecture in Japan.

7 TEA CEREMONY

Partake in a traditional tea ceremony enjoying matcha tea and Japanese treats.

8 SAMURAI ARMOR

This workshop, presented by Lynn Miyauchi from the Consulate General of Japan in Seattle, will demonstrate the process of dressing a model in Samurai Armor called yoroi.

10 JET PROGRAM PRESENTATION

Lynn Miyauchi from the Consulate General of Japan in Seattle will introduce the Japan Exchange and Teaching (JET) program.

12 JAPAN THEMED LUNCH

Enjoy some Japanese cuisine, including fresh sashimi fish from Amakusa city, Kumamoto prefecture. (\$10.39 per person)

USHIBUKA HAIYA DANCE

13-A WORKSHOP PERFORMANCE 13-B

This special event features a group of high school students from Uhibuka, Japan who will perform and teach this traditional dance.

14 TAIKO PERFORMANCE

Professional Japanese Taiko drumming performer, Takumi Kato, and his three sons will perform and share the unique and vibrant culture of Taiko.

15 EXPO OF JAPANESE ART & CULTURE

This exhibit displays traditional and modern-day Japanese art and artifacts, including a Kimono and Samurai Armor.

SEP. 23RD TIME SCHEDULE

10am 10:30am 11am 11:30am 12pm 12:30pm 1pm 1:30pm 2pm 2:30pm 3pm 3:30pm 4pm 4:30pm 5pm 5:30pm 6pm

		All day events															
		1	2-A	3	4												
Student Union Building (SUB)	Glacier (1st floor)	5		5													
	Atrium (1st floor)		6									6					
	Beartooth (2nd floor)								7						7		
	Lawn area (Near SUB)																
	Rimrock Cafe (1st floor)																
	Outside SUB																
	Petro Theatre																
	Cisel Hall																
	Liberal Arts Building, 1st floor – Student Gallery																
			All day events														
		15															