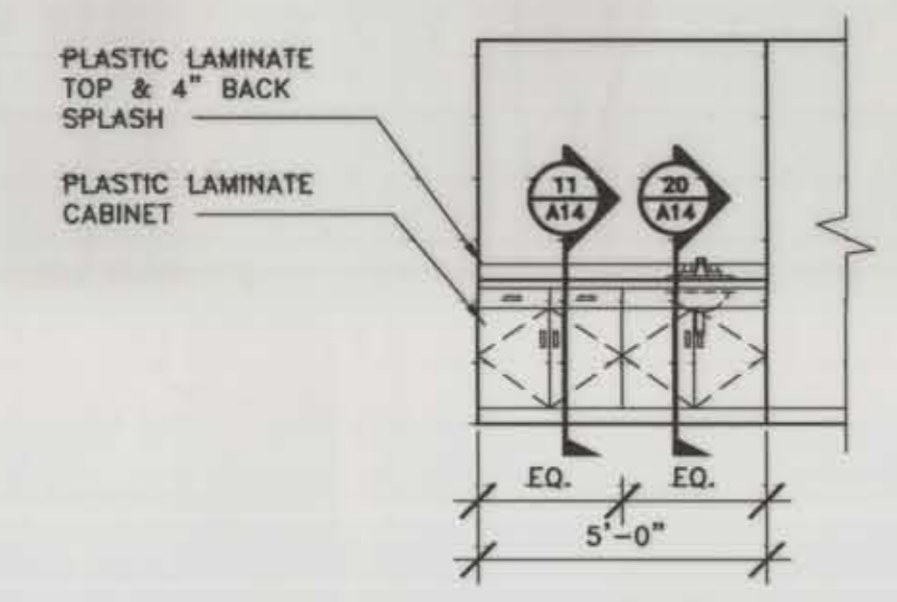


RENOVATION OF APSARUKE HALL
MSU-BILLINGS
BILLINGS, MONTANA

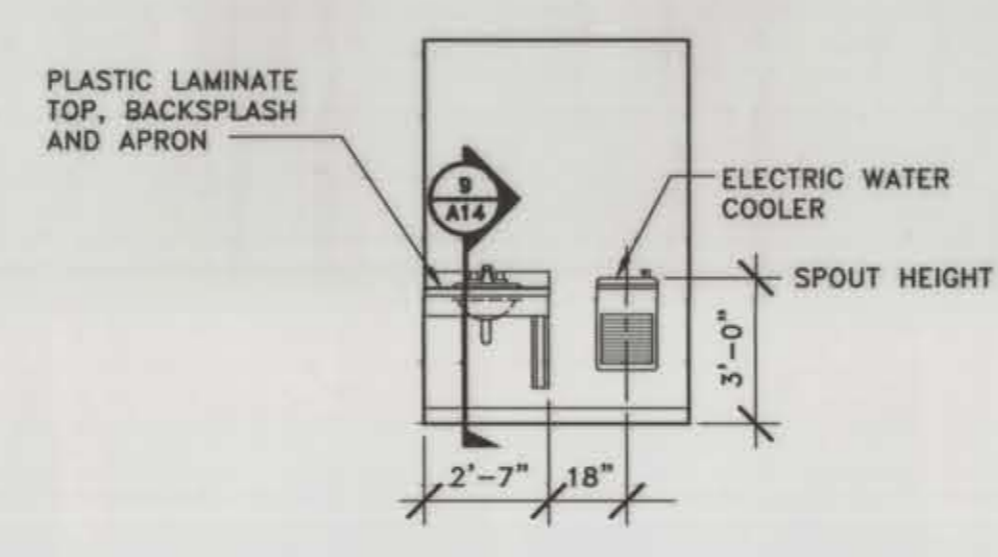
JOB NO. 9504
DRAWN BY JRK/MJH/JED
CHECKED TS
DATE 11-3-95
REVISED 12-3-96

1/8" = 1' - 0"

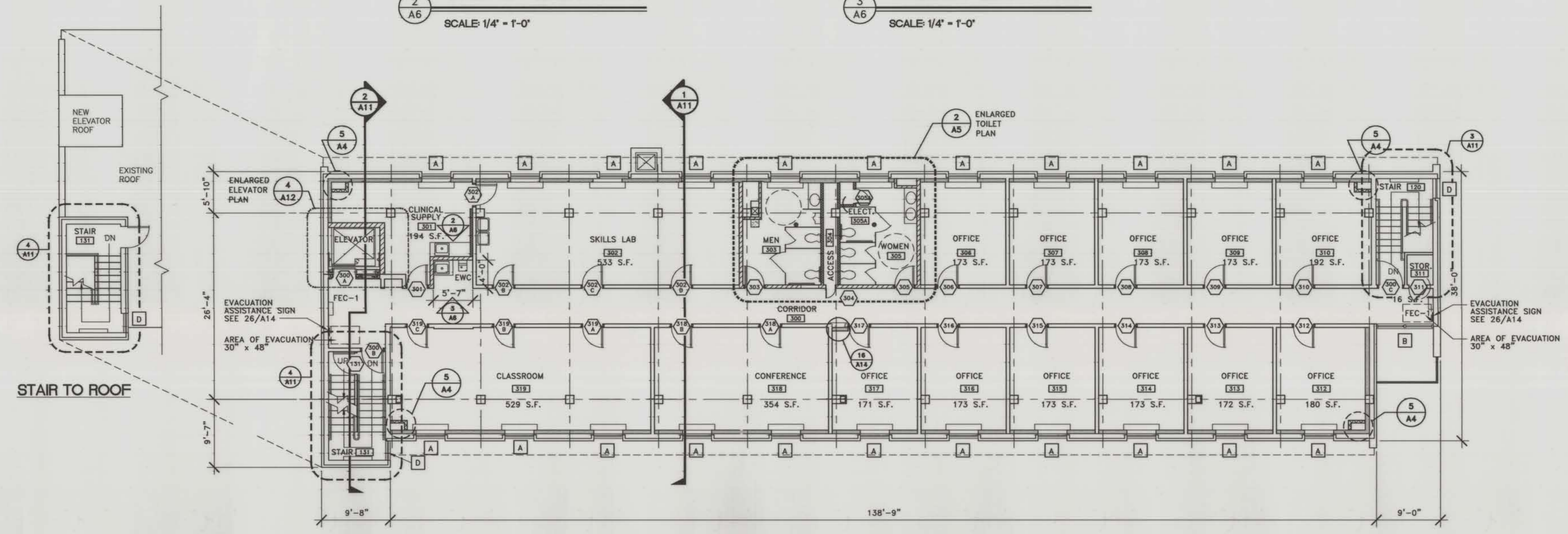
A6



2
A6
CABINET ELEVATION
SCALE: 1/4" = 1'-0"



3
A6
CABINET ELEVATION
SCALE: 1/4" = 1'-0"



1
A6
RENOVATED PLAN - 3RD FLOOR
SCALE: 1/8" = 1'-0"



LEGEND

- 6" METAL STUDS @ 16" O.C. WITH RIGID INSULATION & 5/8" GYPSUM BOARD OVER VAPOR BARRIER
- 6" METAL STUDS @ 16" O.C. WITH SOUND INSULATION & 5/8" GYP. BD.
- 4" METAL STUDS @ 16" O.C. WITH 5/8" GYP. BD. ONE SIDE TAPE & PAINT
- EXISTING HCM WALLS TO REMAIN
- FEC-1 SURFACE-MOUNTED FIRE EXTINGUISHER PANEL
- FEC-2 SEMI-RECESSED FIRE EXTINGUISHER PANEL

AS BUILT DRAWING