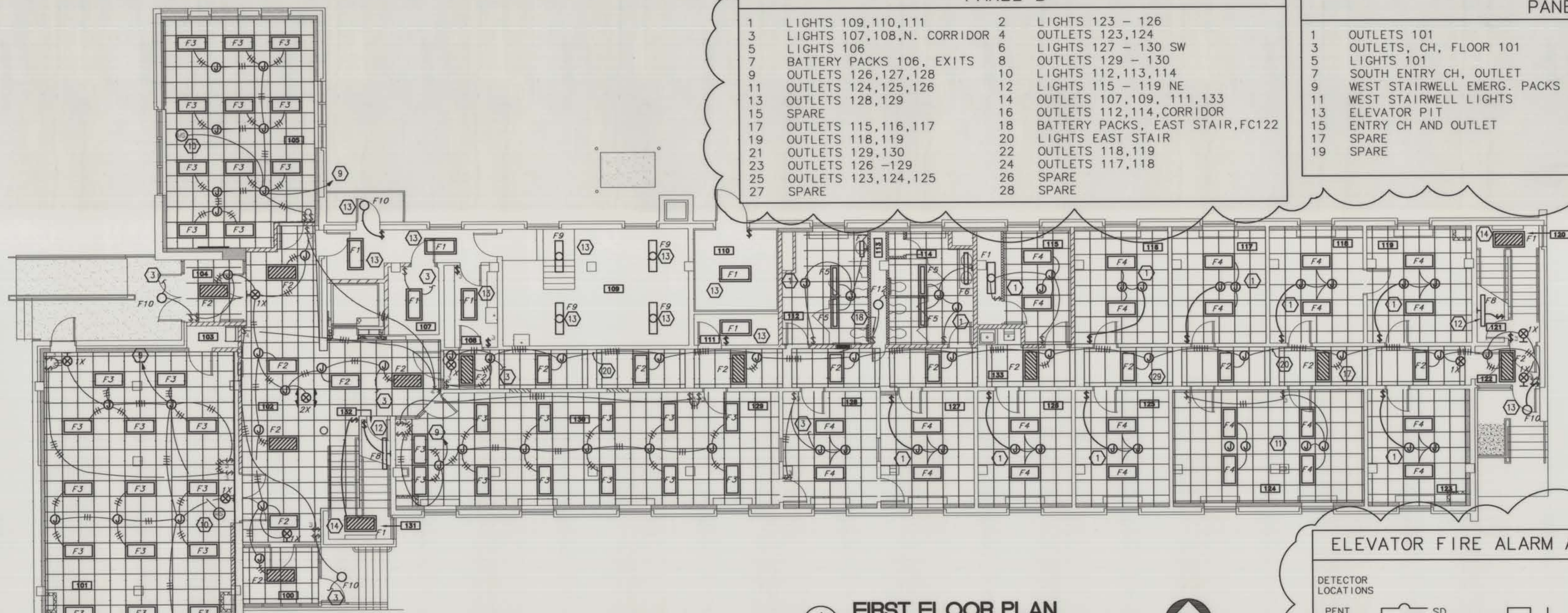


PANEL B

1	LIGHTS 109,110,111	2	LIGHTS 123 - 126
3	LIGHTS 107,108,N. CORRIDOR	4	OUTLETS 123,124
5	LIGHTS 106	6	LIGHTS 127 - 130 SW
7	BATTERY PACKS 106, EXITS	8	OUTLETS 129 - 130
9	OUTLETS 126,127,128	10	LIGHTS 112,113,114
11	OUTLETS 124,125,126	12	LIGHTS 115 - 119 NE
13	OUTLETS 128,129	14	OUTLETS 107,109, 111,133
15	SPARE	16	OUTLETS 112,114,CORRIDOR
17	OUTLETS 115,116,117	18	BATTERY PACKS, EAST STAIR,FC122
19	OUTLETS 118,119	20	LIGHTS EAST STAIR
21	OUTLETS 129,130	22	OUTLETS 118,119
23	OUTLETS 126 -129	24	OUTLETS 117,118
25	OUTLETS 123,124,125	26	SPARE
27	SPARE	28	SPARE

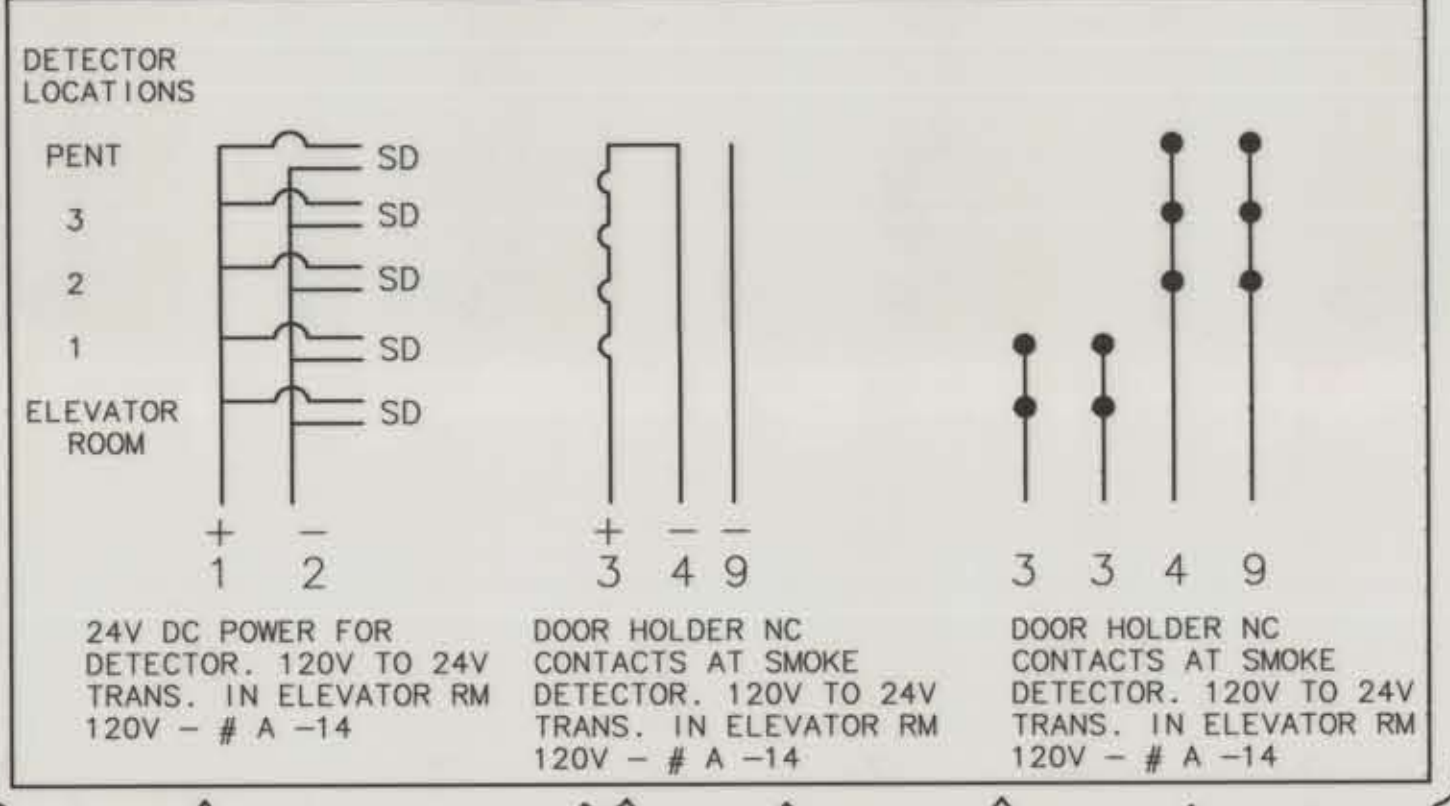
PANEL A

1	OUTLETS 101	2	LIGHTS 105
3	OUTLETS, CH, FLOOR 101	4	OUTLETS 105
5	LIGHTS 101	6	LIGHTS 102
7	SOUTH ENTRY CH, OUTLET	8	EMERG. PACKS ENTRY, EXITS 102
9	WEST STAIRWELL EMERG. PACKS	10	WEST ENTRY WP OUTLET, UV-1, FC
11	WEST STAIRWELL LIGHTS	12	ELEVATOR
13	ELEVATOR PIT	14	ELEVATOR FIRE ALARM
15	ENTRY CH AND OUTLET	16	SPARE
17	SPARE	18	SPARE
19	SPARE	20	SPARE



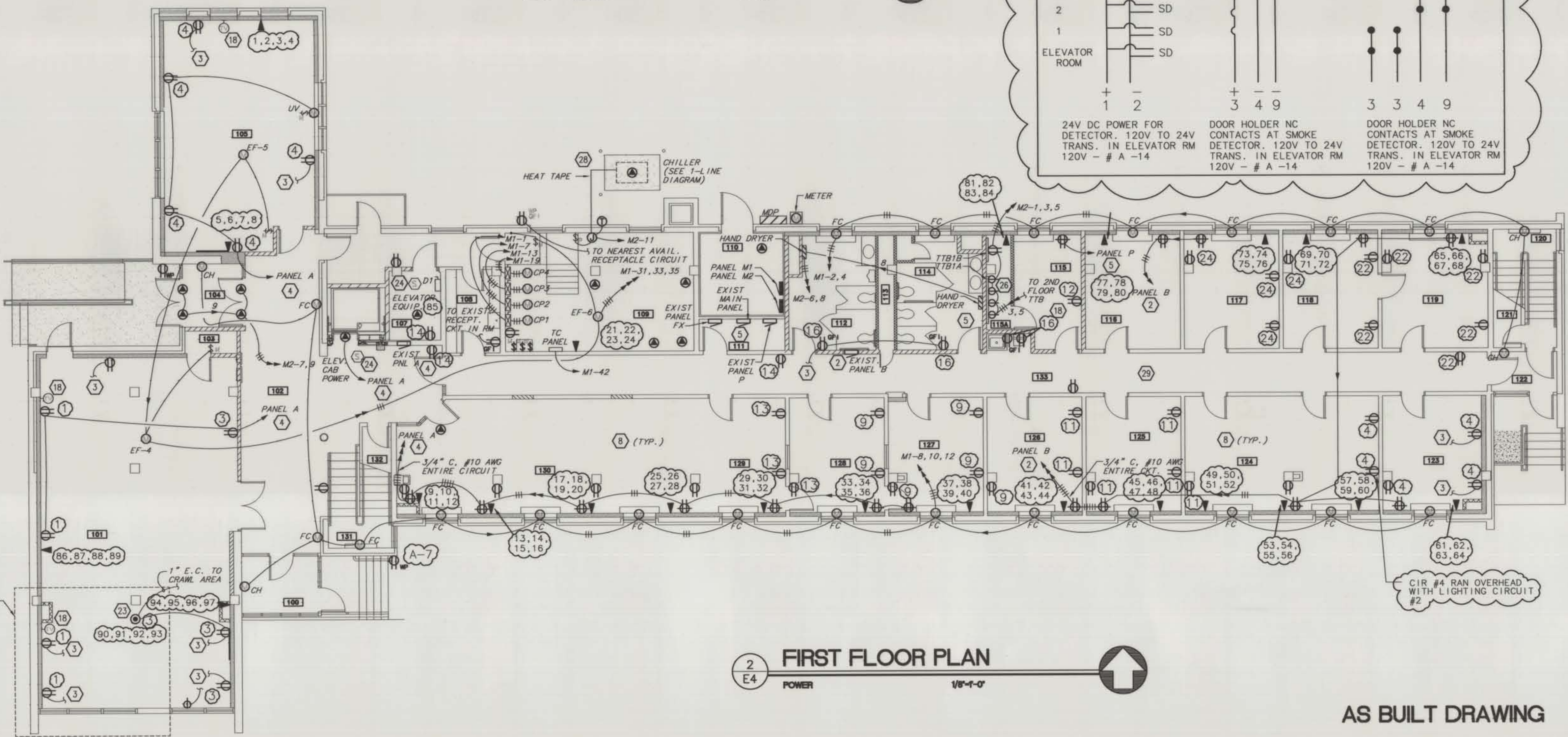
1 FIRST FLOOR PLAN
LIGHTING
1/8"=1'-0"

ELEVATOR FIRE ALARM AND DOOR HOLDERS



TELEPHONE / DATA NOTES:

- 4-CAT5 / 4PR TO EACH JACK LOCATION
- TAG EACH WIRE AT EACH END WITH # SHOWN
- LEAVE 12' OF SLACK ON EACH WIRE AT JACK LOCATION
- AT BACKBOARD LOCATIONS LEAVE ENOUGH WIRE TO FROM CEILING TO FLOOR



2 FIRST FLOOR PLAN
POWER
1/8"=1'-0"

AS BUILT DRAWING

3 PARTIAL CRAWL SPACE PLAN
LIGHTING/POWER
1/8"=1'-0"

