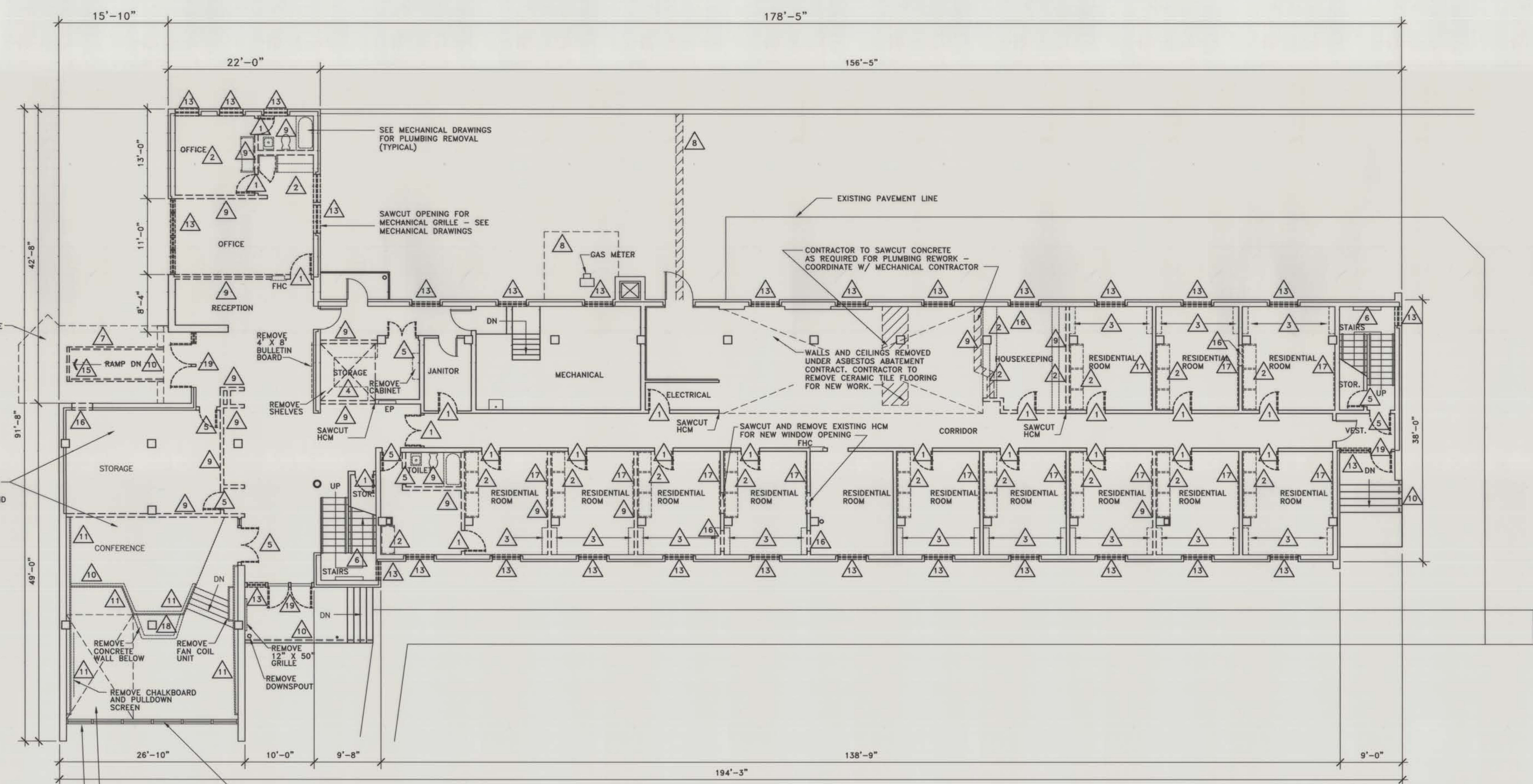


RENOVATION OF APSARUKE HALL
MSU-BILLINGS
BILLINGS, MONTANA



1
A1 **DEMOLITION PLAN - 1ST FLOOR**
SCALE: 1/8" = 1'-0"

NOTES:
1. SEE ELEVATION SHEET A9 FOR EXTERIOR WINDOW, DOOR, AND WALL DEMOLITION.



- 1 REMOVE EXISTING WOOD DOOR, TRANSOM, FRAME, AND NAILING BUCK.
- 2 REMOVE EXISTING CABINET WORK.
- 3 REMOVE SHELVING AND 2X4 NAILER ON WALLS. PATCH WHERE BOLTS ARE REMOVED.
- 4 SAW CUT AND REMOVE EXISTING CONCRETE SLAB. EXCAVATE AS REQUIRED FOR NEW ELEVATOR FIT. SEE DRAWING 1/S1.
- 5 REMOVE WOOD DOOR AND FRAME.
- 6 REMOVE RAILS AND BRACKETS AS DESCRIBED ON DRAWING A11.

DEMOLITION NOTES

(DEMOLITION NOTES SIMILAR FOR ALL THREE FLOORS, EXCEPT AS NOTED.)

- 7 REMOVE EXISTING SOD AND EXCAVATE AS REQUIRED FOR NEW RAMP - (1ST FLOOR ONLY).
- 8 SAWCUT AND REMOVE EXISTING ASPHALT AS REQUIRED FOR NEW PRIMARY POWER AND MECHANICAL CHILLER INSTALLATIONS; TRENCH/BACKFILL BY SUB CONTRACTOR (1ST FLOOR ONLY).
- 9 REMOVE 6" CLAY TILE WALL.
- 10 REMOVE EXISTING RAILING - (1ST FLOOR ONLY).
- 11 REMOVE EXISTING WOOD BAFFLE WALL AND TRIM.
- 12 SAW CUT AND REMOVE EXISTING CONCRETE WAFFLE SLAB FOR ELEVATOR SHAFT. SEE DRAWING A13 FOR SAW CUT DIMENSIONS - (2ND & 3RD FLOOR ONLY).
- 13 REMOVE ALUMINUM WINDOW AND FRAME.
- 14 REMOVE EXISTING ROOFING. SAW CUT AND REMOVE EXISTING CONCRETE ROOF STRUCTURE - (3RD FLOOR ONLY).
- 15 REMOVE WOOD RAMP - (1ST FLOOR ONLY).
- 16 SAWCUT AND REMOVE EXISTING HCM DOWN TO FLOOR LINE FOR NEW DOOR INSTALLATION. ALSO SAWCUT AND REMOVE EXTERIOR BRICK AT DOOR 101B - (1ST FLOOR ONLY).
- 17 REMOVE 1X2 WOOD TRIM FROM WALL.
- 18 REMOVE P-LAM TOP AND FRAMING - (1ST FLOOR ONLY).
- 19 REMOVE ALUMINUM DOOR, FRAME, AND STOREFRONT - (1ST FLOOR ONLY).

AS BUILT DRAWING

JOB NO. 9504
DRAWN BY: JRK, JDL, LMS
CHECKED: TS
DATE: 11-3-95
REVISED: 12-3-96

1/8" = 1' - 0"

A1