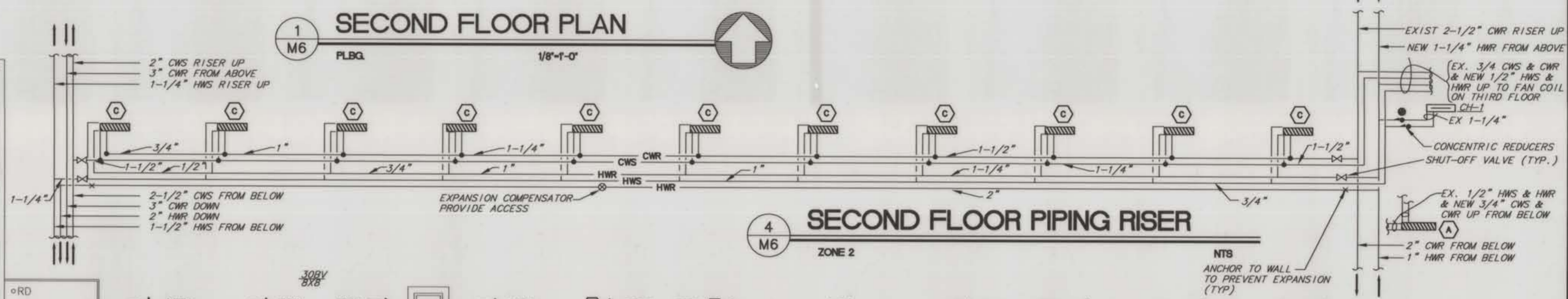
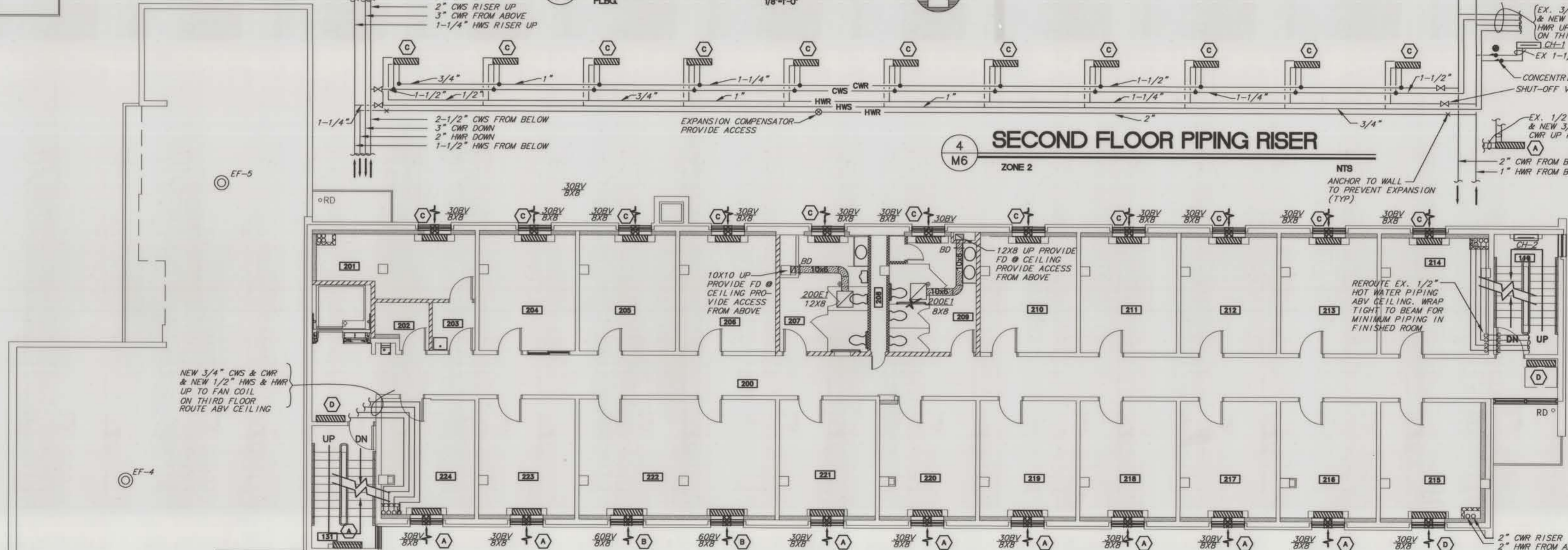


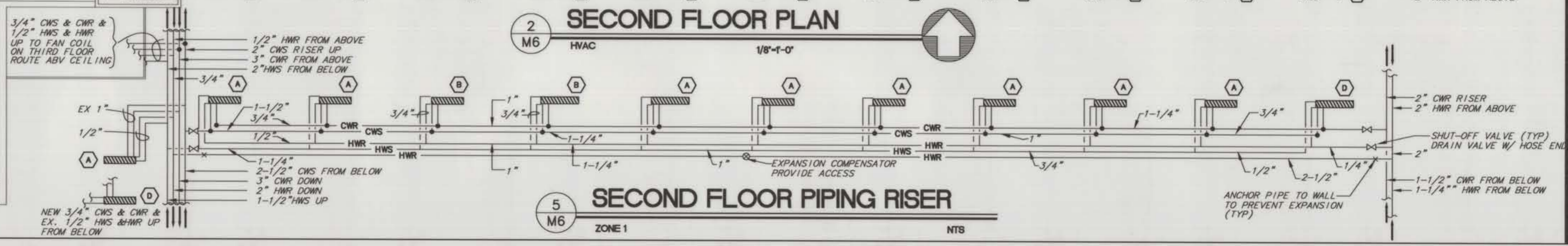
1 SECOND FLOOR PLAN
FLBQ. 1/8"-1'-0"



4 SECOND FLOOR PIPING RISER
M6 ZONE 2



2 SECOND FLOOR PLAN
HVAC 1/8"-1'-0"



5 SECOND FLOOR PIPING RISER
M6 ZONE 1

- GENERAL NOTES:**
1. INSTALL FAN COIL AS SCHEDULED WHERE SHOWN. - FAN COIL. A SEE SCHEDULE M1
 2. REUSE EXISTING HEAT PIPING AS CHILLED WATER PIPING. ROUTE NEW PIPING AS SHOWN.
 3. 3/4" CHILLED WATER AND 1/2" HOT WATER SUPPLY AND RETURN RISERS UNLESS OTHERWISE NOTED
 4. PROVIDE SHUT-OFF AND DRAIN VALVES FOR EACH FLOOR SUPPLY AND RETURN MAINS. COORDINATE ACCESS W/ GC

AS BUILT DRAWING