

DEMOLITION LEGEND:

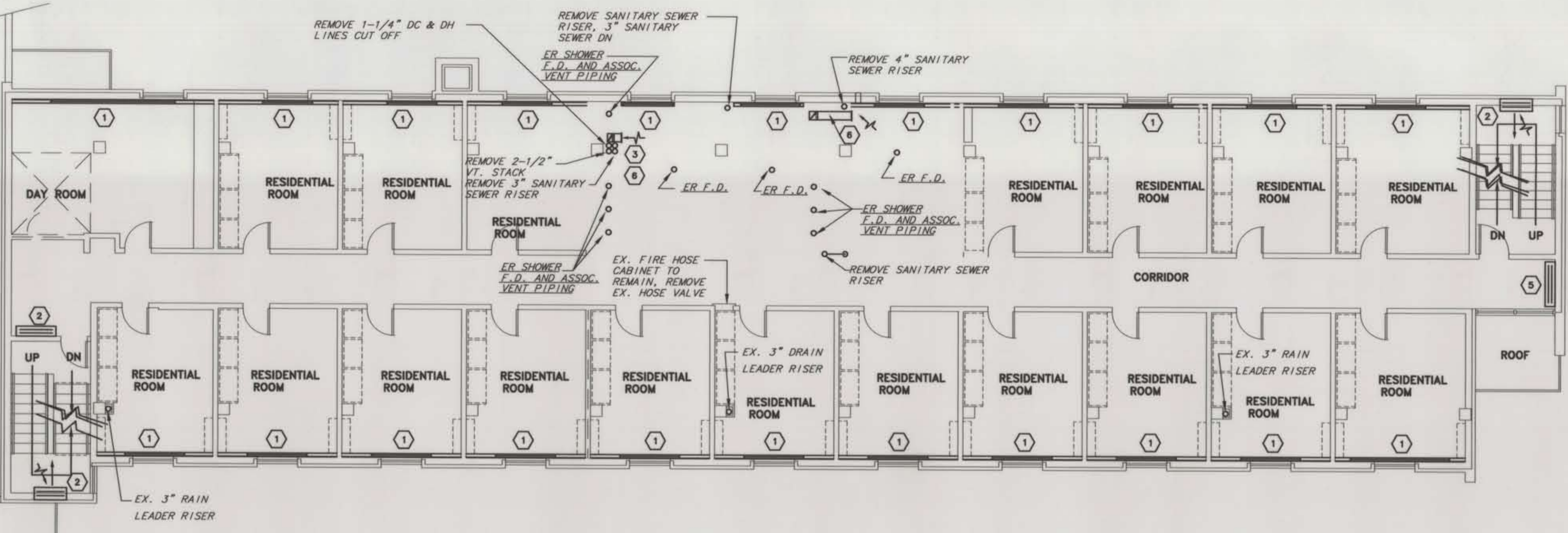
- LIGHT LINES = EXISTING TO REMAIN
- DARK LINES = EXISTING TO BE REMOVED

HVAC DEMOLITION NOTES:

- 1 REMOVE EXISTING FINITUBE HEATING ELEMENTS. CAP BRANCHES AT MAINS. SUPPLY AND RETURN MAINS TO REMAIN.
- 2 REMOVE EXISTING CABINET HEATER COMPLETE DISCONNECT SUPPLY AND RETURN BRANCH LINES AT MAINS. PREPARE FOR BRANCH LINE CONNECTIONS TO NEW HEATING MAINS, AND INSTALLATION OF NEW CABINET HEATERS.
- 3 REMOVE EXISTING GRILLE.
- 4 REMOVE EXISTING EXHAUST FAN.
- 5 REMOVE EXISTING CABINET HEATER.
- 6 REMOVE EXISTING EXHAUST DUCT
- 7 REMOVE EXISTING ROOF EXHAUST FAN

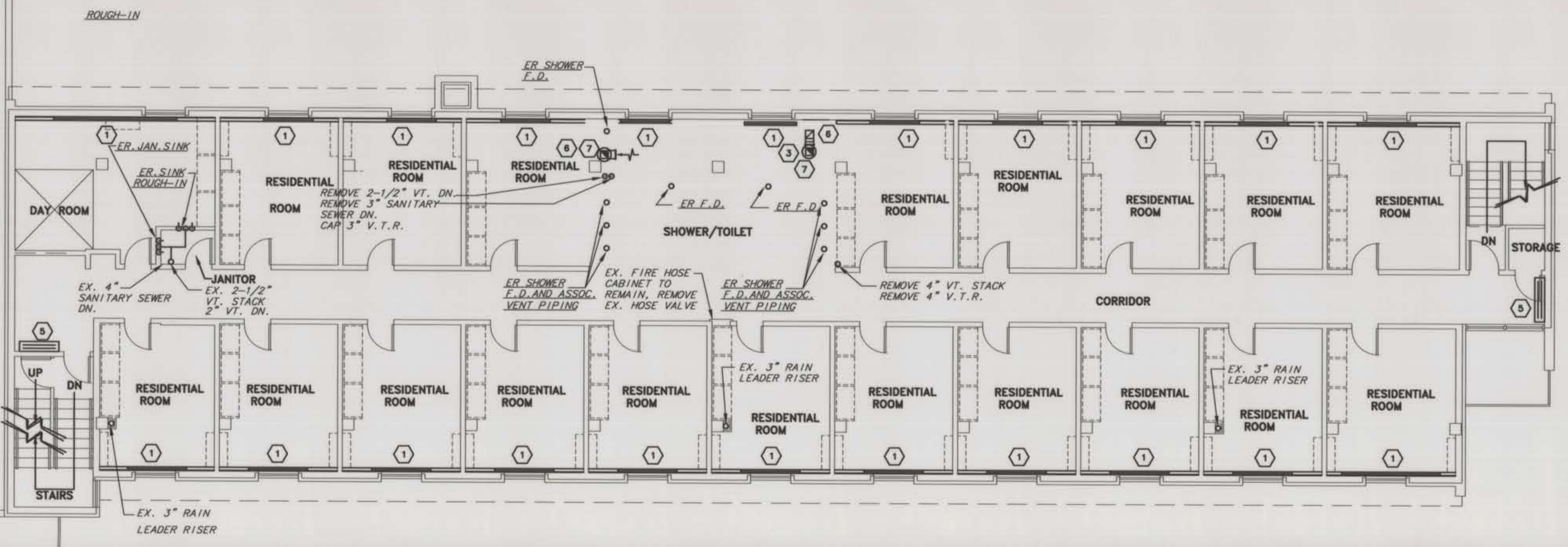
PLUMBING DEMOLITION NOTES:

1. REMOVE AND CAP ALL UNUSED PIPING ABOVE CEILING, BELOW FLOOR AND WITHIN WALLS AS REQUIRED.
2. EX. PLUMBING FIXTURES TO BE REMOVED ARE NOTED AS EX.
3. ALL PLUMBING FIXTURES NOTED AS EX. ARE TO REMAIN.
4. REMOVED FIXTURES TO BECOME PROPERTY OF OWNER. STORAGE LOCATION AS INDICATED BY OWNER.



SECOND FLOOR PLAN

1 M3
PLBQ/HVAC DEMO. 1/8"=1'-0"



THIRD FLOOR PLAN

2 M3
PLBQ/HVAC DEMO. 1/8"=1'-0"

AS BUILT DRAWING