

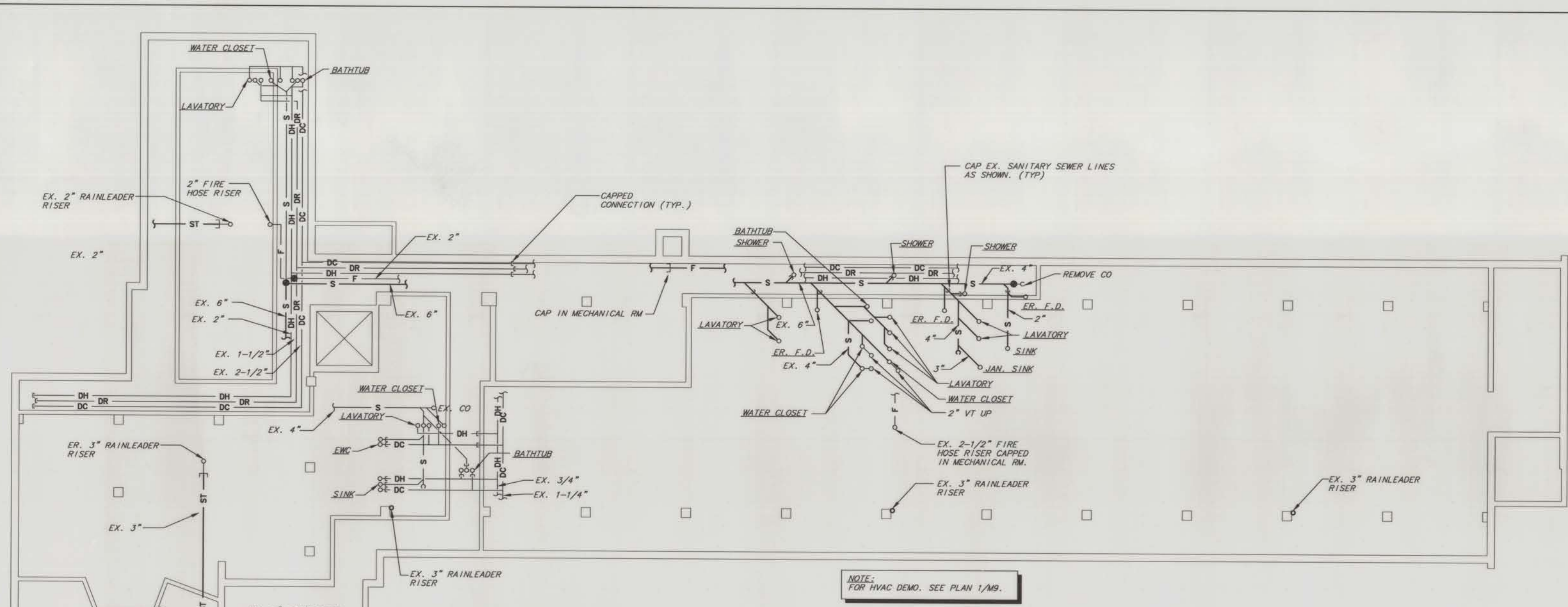
DEMOLITION LEGEND:
 — LIGHT LINES = EXISTING TO REMAIN
 — DARK LINES = EXISTING TO BE REMOVED

HVAC DEMOLITION NOTES:

- 1 REMOVE EXISTING FIN TUBE HEATING ELEMENTS. CAP BRANCHES AT MAINS. SUPPLY AND RETURN MAINS TO REMAIN.
- 2 REMOVE EXISTING CABINET HEATER COMPLETE. DISCONNECT SUPPLY AND RETURN BRANCH LINES AT MAINS. PREPARE FOR BRANCH LINE CONNECTIONS TO NEW HEATING MAINS, AND INSTALLATION OF NEW CABINET HEATERS.
- 3 REMOVE EXISTING CABINET HEATER
- 4 REMOVE EXISTING UNIT VENTILATOR COMPLETE. DISCONNECT SUPPLY AND RETURN BRANCH LINES AT MAINS. PREPARE BRANCH LINES TO CONNECT NEW HEATING MAINS.
- 5 REMOVE EXISTING GRILLE.
- 6 REMOVE EXISTING EXHAUST FAN AND ASSOCIATED DUCT WORK.
- 7 REMOVE EXISTING EXHAUST DUCT AS SHOWN.
- 8 REMOVE EXISTING HOT WATER RISERS FOR NEW WALL INSULATION

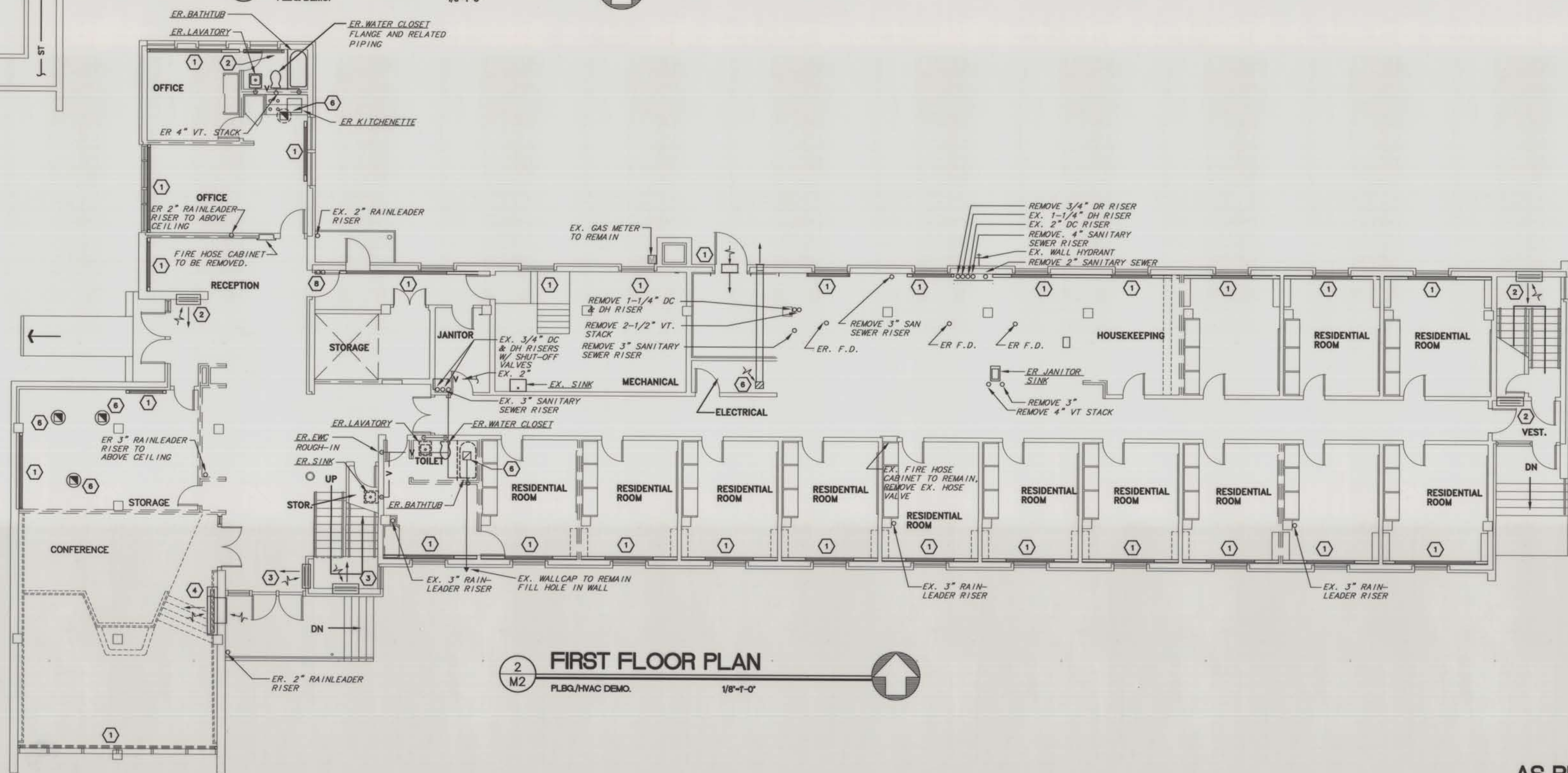
PLUMBING DEMOLITION NOTES:(GENERAL)

- 1 REMOVE AND CAP ALL UNUSED PIPING ABOVE CEILING, BELOW FLOOR AND WITHIN WALLS AS REQUIRED.
- 2 EX. PLUMBING FIXTURES TO BE REMOVED ARE NOTED AS ER.
- 3 ALL PLUMBING FIXTURES NOTED AS EX. ARE TO REMAIN
- 4 REMOVED FIXTURES TO BECOME PROPERTY OF OWNER, STORAGE LOCATION AS INDICATED BY OWNER.



1 CRAWLSPACE PLAN
 PLBQ. DEMO. 1/8"=1'-0"

NOTE:
FOR HVAC DEMO. SEE PLAN 1/M9.



2 FIRST FLOOR PLAN
 PLBQ./HVAC DEMO. 1/8"=1'-0"

AS BUILT DRAWING