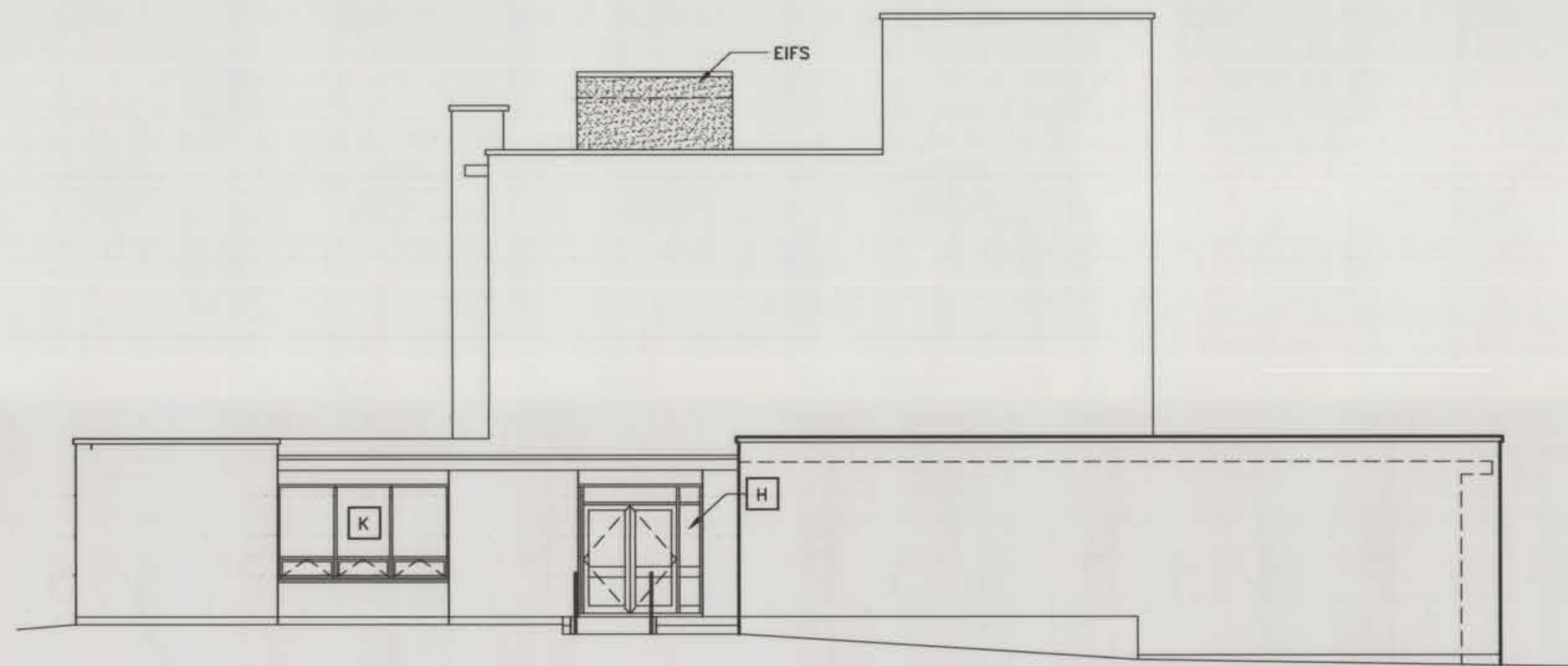


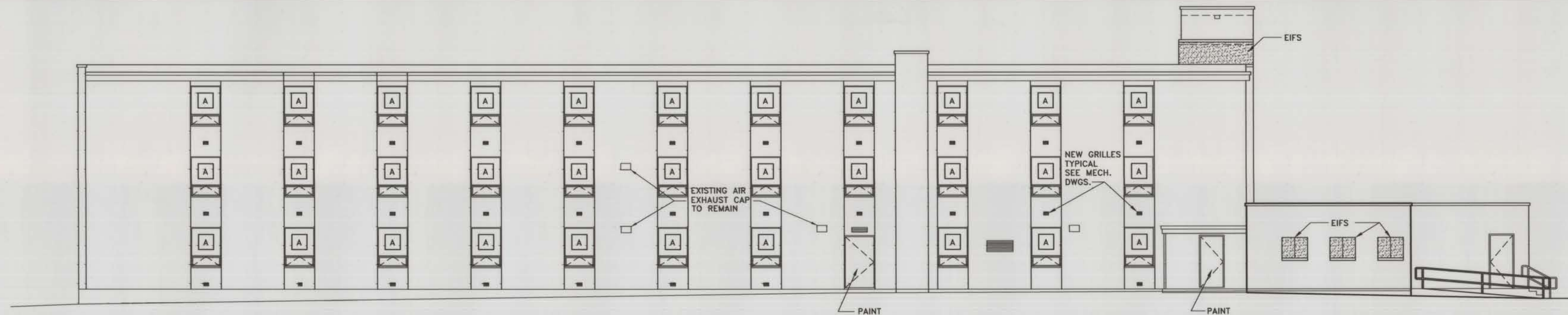
RENOVATED EAST ELEVATION

SCALE: 1/8" = 1'-0"



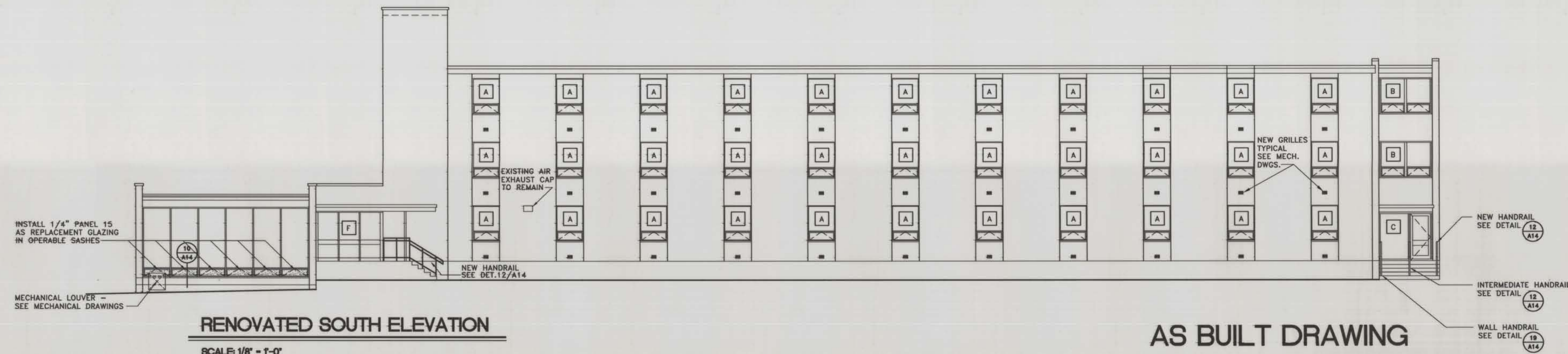
RENOVATED WEST ELEVATION

SCALE: 1/8" = 1'-0"



RENOVATED NORTH ELEVATION

SCALE: 1/8" = 1'-0"



RENOVATED SOUTH ELEVATION

SCALE: 1/8" = 1'-0"

AS BUILT DRAWING