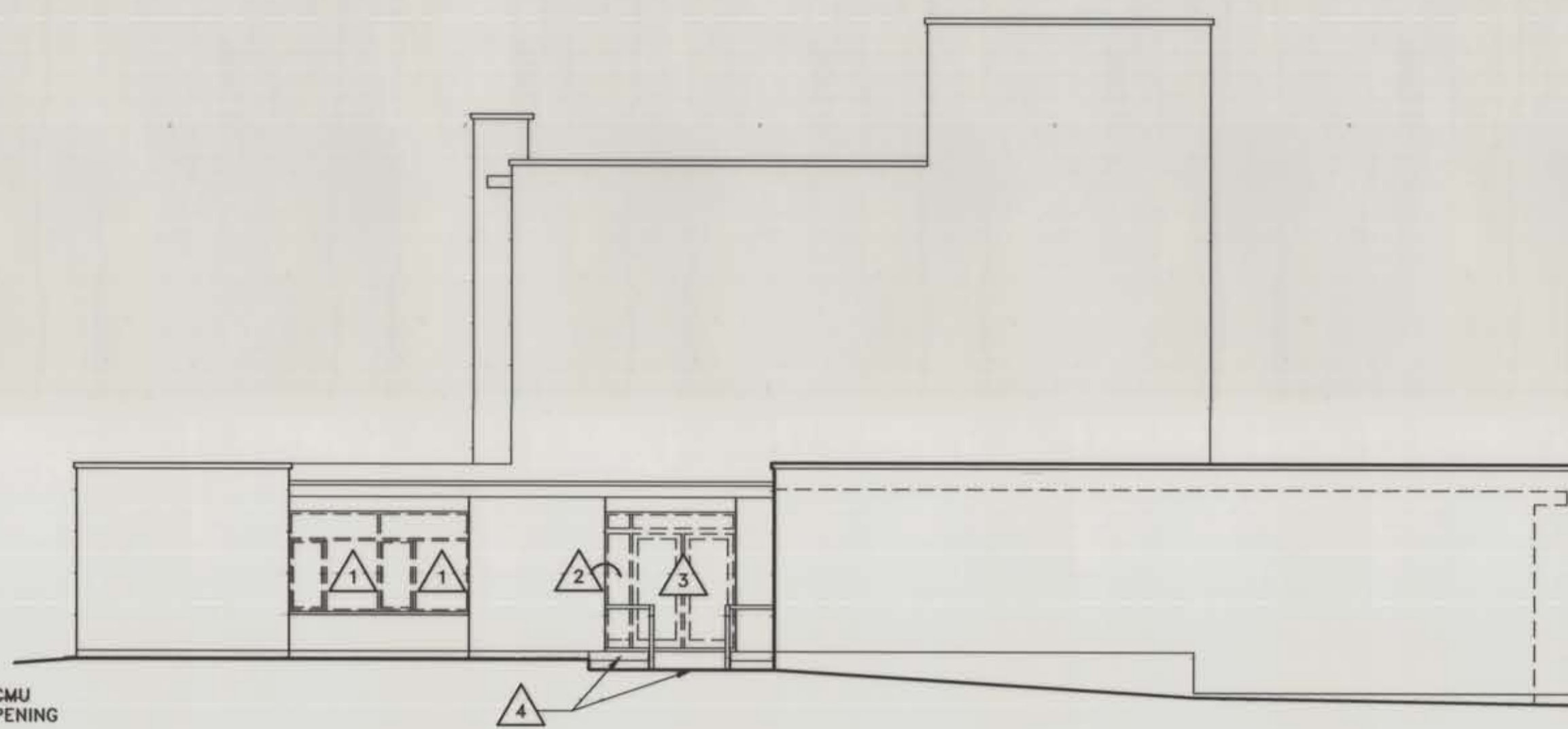


DEMOLITION EAST ELEVATION

SCALE: 1/8" = 1'-0"



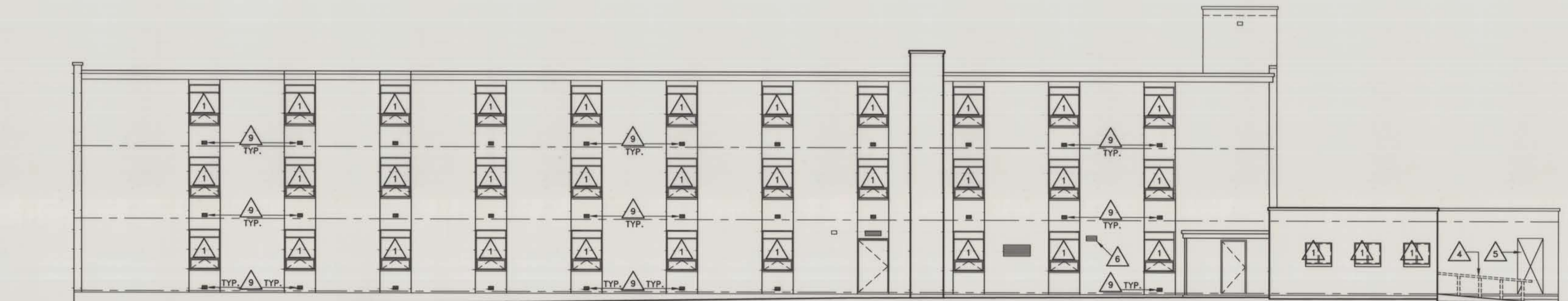
DEMOLITION WEST ELEVATION

SCALE: 1/8" = 1'-0"

DEMO NOTES

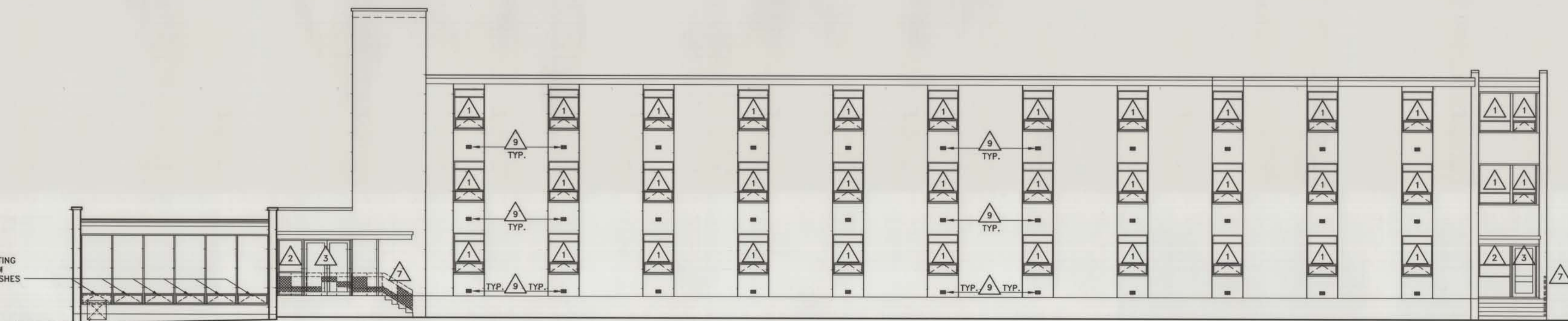
- 1 REMOVE EXISTING ALUMINUM WINDOW, AND ANCHORS.
- 2 REMOVE EXISTING WOOD WINDOW FRAME, TRIM, AND ANCHORS.
- 3 REMOVE EXISTING ALUMINUM DOOR, FRAME, SILL, AND HARDWARE.
- 4 REMOVE EXISTING STEEL RAILS AND WOOD HANDICAP RAMP.
- 5 SAW CUT EXISTING MASONRY FOR NEW DOOR OPENING.
- 6 SAW CUT EXISTING MASONRY FOR NEW MECHANICAL EXHAUST FAN.
- 7 REMOVE EXISTING METAL RAILING SYSTEM.
- 8 SAWCUT EXISTING MASONRY & CONCRETE FOR NEW MECHANICAL OPENING
- 9 REMOVE PORTION OF EXISTING BRICK/CMU WALL FOR NEW AIR INTAKE. VERIFY SIZE WITH MECHANICAL UNIT.
- 10 REMOVE THROUGH WALL MECHANICAL GRILLE.

SAWCUT EXISTING BRICK/CMU WALL FOR MECHANICAL OPENING



DEMOLITION NORTH ELEVATION

SCALE: 1/8" = 1'-0"



DEMOLITION SOUTH ELEVATION

SCALE: 1/8" = 1'-0"

REMOVE EXISTING GLAZING FROM OPERABLE SASHES

AS BUILT DRAWING

644 Grand Avenue
Billings, Montana 59101
406-245-6363

ARCHITECTS
ENGINEERS
PLANNERS

JGA

RENOVATION OF APSARUKE HALL
MSU-BILLINGS
BILLINGS, MONTANA

JOB NO. 9504
DRAWN BY MJH/JDK
CHECKED TS
DATE 11-3-95
REVISED 12-4-96

1/8" = 1' - 0"

A9

C:\jga\CAD\9504\9504-a9 Thu Dec 19 09:05:18 1996 JGA ARCHITECTS BILLINGS, MT