



Women's Basketball

Lady Yellowjacket Basketball 2006-2007

Weekly Release #16 – March 5, 2007

This Week's Events:

Mar. 9-12 - NCAA South Central Region Tournament

South Central Region Team Capsules:

#1 Missouri Western State University Griffons

Location: St. Joseph, MO
Conference: Mid-America Intercollegiate Athletics Association
Record: 29-3; National Rank: 4
Top Players: Ashleigh Curry, 5-8 Jr. (17.3 ppg, 66 3pt fg); Inga Busoka, 6-3 Sr. (16.0 ppg, 8.5 rpg, 77 blks); Jill Johnson, 5-11 Jr. (14.2 ppg, 8.0 rpg)

#2 West Texas A&M University Lady Buffs

Location: Canyon, TX
Conference: Lone Star Conference
Record: 27-4 (LSC runner up); National Rank: 8
Top Players: Emily Brister, 5-9 So. (22.9 ppg, 83 3pt fg); Courtney Lee, 5-7 So. (9.9 ppg, 4.5 rpg); Natalie Wheeler, 5-9 Sr. (9.6 ppg)

#3 Washburn University Lady Blues

Location: Topeka, KS
Conference: Mid-America Intercollegiate Athletics Association
Record: 27-3 (MIAA Champion); National Rank: 6
Top Players: Brooke Ubelaker, 5-11 Sr. (15.2 ppg, 81 3pt fg); Sequorhea Stiger, 5-9 Jr. (13.7 ppg); Amanda Holmes, 6-2 Jr. (11.3 ppg, 7.2 rpg, 42 blks)

#4 Texas A&M University-Commerce Lions

Location: Commerce, TX
Conference: Lone Star Conference
Record: 25-8 (LSC Champion); National Rank: n/a
Top Players: Britney Jordan, 5-8 So. (18.2 ppg, 4.4 rpg); Kanani Marshall, 5-9 Sr. (18.1 ppg, 132 3pt fg); Katedria Mosley, 6-1 Jr. (12.2 ppg, 6.7 rpg)

#5 Emporia State University Hornets

Location: Emporia, KS
Conference: Mid-America Intercollegiate Athletics Association
Record: 22-7; National Rank: 11
Top Players: Michelle Stueve, 6-2 Jr. (17.7 ppg, 9.2 rpg, 65 3pt fg); Cassandra Boston, 5-6 Fr. (12.2 ppg); Casey Henningsen, 6-1 Sr. (11.1 ppg, 6.3 rpg)

#6 Angelo State University Rambelles

Location: San Angelo, TX
Conference: Lone Star Conference
Record: 17-11; National Rank: n/a
Top Players: Kandra Lakey, 5-10 Jr. (12.2 ppg, 6.3 rpg); Britinee Davis, 5-4 Sr. (9.3 ppg, 39 3pt fg); Meghann LeJeune, 5-10 Sr. (8.9 ppg, 4.9 rpg)

#7 Northwest Missouri State University Bearcats

Location: Maryville, MO
Conference: Mid-America Intercollegiate Athletics Association
Record: 18-11; National Rank: n/a
Top Players: Meghan Brue, 5-10 So. (12.3 ppg, 6.2 rpg); Mandi Schumacher, 6-0 Jr. (12.0 ppg, 6.7 rpg); Kelli Nelson, 5-5 Jr. (10.7 ppg)

#8 Montana State University-Billings Yellowjackets

Location: Billings, MT
Conference: Heartland Conference
Record: 22-9 (HLC Champion); National Rank: n/a
Top Players: Alira Carpenter, 5-10 So. (16.9 ppg, 85 3pt fg); Michelle Lieber, 6-0 Sr. (16.8 ppg, 8.9 rpg); Kayla McPherson, 5-10 So. (9.5 ppg, 64 3pt fg); Shantell Marquis, 5-10 Fr. (7.4 ppg, 71 stls, 20 blks)

2006-2007 Schedule and Results

22-9 overall, 7-3 HLC

<u>Date</u>	<u>Opponent</u>	<u>Time/Result</u>
11/17	Western Oregon	W, 77-62
11/18	North Dakota	L, 71-62
11/28	Rocky Mountain	W, 85-69
11/30	at Northwest Missouri St.	L, 95-82
12/2	at Missouri Western St.	L, 75-56
12/6	Mont. St.-Northern	W, 80-67
12/9	at St. Martin's	W, 84-68
12/15	University of Mary	W, 69-63
12/19	vs. Abilene Christian [^]	W, 86-61
12/20	vs. Missouri Southern [^]	W, 78-69
12/30	Oklahoma Panhandle *	W, 80-64
1/4	Texas A&M – Inter.	W, 82-64
1/6	St. Edward's *	W, 76-57
1/7	St. Edward's	W, 78-61
1/12	at Oklahoma Panhandle *	L, 85-82
1/13	at Oklahoma Panhandle	W, 73-66
1/15	at Texas – Permian Basin	W, 88-62
1/20	Lincoln University *	W, 73-47
1/24	St. Mary's University *	W, 69-67
1/27	Incarnate Word*	W, 89-81
1/28	Incarnate Word	W, 66-65
2/2	at Lincoln University *	L, 66-62
2/3	at Lincoln University	L, 75-71 OT
2/8	at St. Mary's *	W, 59-57
2/10	at Incarnate Word *	L, 65-37
2/12	at St. Mary's	L, 51-48
2/17	Texas – Permian Basin	W, 97-60
2/22	at Texas A&M – Inter.	L, 75-66
2/24	at St. Edward's *	W, 70-67 OT
<i>Heartland Conference Tournament</i>		
3/2	vs. St. Mary's	W, 67-64
3/3	vs. Incarnate Word	W, 62-52
<i>NCAA South Central Region Tournament</i>		
3/9	vs. Missouri Western St.	8:00 p.m.
3/10	Second Round	8:00 p.m.
3/12	Championship	7:00 p.m.

Home Games in Bold played at Alterowitz Gym

Exhibition Game

* Heartland Conference Game

[^] Hoop 'N Surf Classic, Honolulu, HI

All times local to game site

Lady Yellowjackets on the Airwaves

All Yellowjacket games at the NCAA South Central Region Tournament will be broadcast live on AM 970 in Billings and on the web at www.msubillings.edu/athletics by play-by-play man Pat Boland.

Week in Review

The Jackets received the No. 8 seed in the NCAA South Central Regional when the NCAA Women's Basketball Committee announced the 2007 NCAA Division II Tournament pairings Sunday night. The Yellowjackets will face No. 1 seed and regional host Missouri Western State University in the first round of the tournament on Friday in St. Joseph, MO.

The Yellowjackets earned their tenth trip to the NCAA Tournament in the last 14 seasons and their 11th overall by winning the Heartland Conference Tournament Championship on Saturday. The top-seeded Jackets defeated University of the Incarnate Word 62-52 to add the conference tournament title to their regular season championship. MSUB defeated St. Mary's University 67-64 in the semifinals on Friday.

After weeks of games coming down to the final minute, the Jackets left little doubt about the outcome of the Heartland Conference championship game on Saturday. The Yellowjackets bid a resounding farewell to the Heartland Conference, beating University of the Incarnate Word 62-52 for the conference title and automatic berth to the NCAA Tournament.

The Yellowjackets trailed 12-6 just four minutes into the game. MSUB turned the tables in a hurry, going on a 14-0 run over the next 4:20. Jen Smith sparked the run, scoring eight of her 15 points. The Yellowjackets opened their lead to 13 points on a Kayla McPherson 3-pointer with 7:53 left in the first half. Smith and McPherson came off the bench to combine for 19 of the Yellowjackets' 36 first half points. The sophomore tandem was a combined 7-of-10 from the field in the half, and McPherson hit both of her 3-point attempts.

The Yellowjackets looked as though they may blow the game open early in the second half. MSUB outscored the Cardinals 13-8 in the first nine minutes of the half for their biggest lead of the game at 49-30. A 9-0 run by UIW made it a ballgame with eight and a half minutes to play, but the Cardinals had a tough time breaking the Jackets' 10-point lead. They did get to within eight in the final half minute, but the outcome was decided by then.

Michelle Lieber posted her second double-double of the tournament and twelfth of the season with 16 points and 10 rebounds. She also blocked three shots. The national leader in field goal percentage at 70 percent this season, Lieber was 7-of-10 from the field.

Smith was 5-of-7 from the field and 5-of-8 from the free throw line for her 15 points. She also grabbed eight rebounds, four on the offensive end. Alira Carpenter added 11 points, hitting all six of her free throws. The Yellowjackets were 19-of-32 from the charity stripe as a team. McPherson finished with nine points, all in the first half. Shantell Marquis had seven points and five rebounds. Dani Henderson did not score in the game, but she pulled down seven rebounds and had two steals.

MSUB came back from a three-point halftime deficit to defeat St. Mary's 67-64 in the semifinals of the Heartland Conference Tournament on Friday. Despite the Yellowjackets' entering the tournament as the No. 1 seed and the Rattlers the No. 4 seed, all three regular season meetings between the two were decided by three points or fewer. MSUB won two of those three games with St. Mary's winning the last meeting in San Antonio on February 12. Friday's semifinal game proved as evenly matched as the previous three games.

The Yellowjackets jumped out to a quick 8-0 lead in the first 3:08 of the game, but that was the largest lead either team would hold the entire game. The Rattlers responded with a 9-2 run to draw within a point, and the game seesawed the rest of the way.

True to form, there were 11 ties and eight lead changes in the game. Seven of the ties and four of the lead changes came in the final 17 minutes. The Yellowjackets didn't seize the lead for good until Jetton Meadors converted a 3-point play in the paint with 6:23 to play. A Jennifer Skrifvars jumper just inside the arc with 4:04 to play gave MSUB its largest lead of the second half at 62-55.

The Yellowjackets outscored the Rattlers 20-4 on fast break points and 18-10 on points off turnovers. Lieber led all players with 18 points and 10 rebounds. She was 7-of-9 from the field and also had three steals. Carpenter scored 14 points on 5-of-12 shooting from the field.

Meaders finished the game with a dozen points and four assists. McPherson added 10 points off the bench, going 3-of-4 from the field and 3-of-4 from the line. Marquis had seven points, four assists, and two steals. Skrifvars had four points and a game-high five assists.

Note:

Fans are invited to meet the Montana State-Billings women's basketball team at Hu Hot Mongolian Grill from 7:00 to 8:00 p.m. on Tuesday, March 6. The Lady Jackets will be at Hu Hot for the "Yellowjacket Sports Show" that runs from 7:00 to 8:00 p.m. on AM 970 KBUL. Head coach Kevin Woodin and Lady Jacket players will be featured on the Sports Show.

Heartland Conf. Standings (Final)

<u>Team</u>	<u>All</u>	<u>Conf</u>
1. Montana State-Billings	22-9	7-3
2. St. Edward's	9-18	6-4
3. Incarnate Word	15-14	6-4
4. St. Mary's	12-16	5-5
5. Oklahoma Panhandle State	8-19	3-7
6. Lincoln University	8-19	3-7

NCAA South Central Region Tournament Seeding

1. Missouri Western State
2. West Texas A&M
3. Washburn
4. Texas A&M-Commerce
5. Emporia State
6. Angelo State
7. Northwest Missouri State
8. Montana State-Billings

Current Lady Jackets in the School Record Books

Michelle Lieber

Career:	1st for FG% (67.1) 4th for rebounds per game (9.1) 5th for blocks (71) [needs 72 for 4th] 6th for free throws (283) [needs 286 for 5th] 7th for rebounds (726) [needs 734 for 6th] 9th for points per game (13.6) 11th for FT% (73.7) 17th for points (1,089) [needs 1,129 for 16th]
Season:	1st for FG % (70.3 in 06-07) 2nd for FG% (67.1 in 05-06) 3rd for FG % (63.4 in 04-05) 3rd for FT's (146 in 06-07) [needs 183 for 2nd] 7th for rebounds and rpg (275, 10.2 in 05-06) 16th for blocks (25 in 06-07; 25 in 05-06)
Game:	t-2nd for FG% (91.7%, 11/12) 5th for FG% (87.5%, 14/16) t-15th for points (32) t-20th for points (31) t-6th for FT's (12) t-10th for FT's (11) t-5th for FT% (9/10) t-10th for rebounds (19)

Alira Carpenter

Career:	5th for 3-Ptrs. (130) [needs 149 for 4th] 3rd for 3-Pt.% (40.0) 6th for points per game (14.5) 23rd for points (841) [needs 842 for 22nd]
Season:	1st for 3-Ptrs. (85 in 06-07) 5th for points (525 in 06-07) 9th for 3-Pt.% (42.1 in 06-07) 12th for 3-Ptrs. (45 in 05-06)
Game:	t-31st for points (30) t-1st for 3-Ptrs. (7) t-2nd for 3-Ptrs. (6) t-13 for 3-Ptrs. (5) t-1st 3-Pt.% (5/5) t-8th for 3 Pt.% (4/5)

Shantell Marquis

Season:	4th for steals (71 in 06-07) [needs 79 for 3rd]
----------------	---

Kayla McPherson

Career:	2nd for 3 Pt.% (40.4) 12th for 3-Ptrs. (84) [needs 87 for 11th]
Season:	t-4th for 3-Ptrs. (64 in 06-07) [needs 68 for 3rd] 12th for 3-Pt.% (40.5 in 06-07) 13th for 3 Pt.% (40.0 in 05-06)
Game:	t-4th for 3-Ptrs (6) and 3 Pt.% (6/7)

Jetton Meadors

Career:	8th for 3 Pt. % (37.4)
Game:	t-8th for 3 Pt.% (4/5) t-4th for 3-Ptr. (6)



2006-2007 Yellowjacket Players and Coaches

2006-2007 Lady Yellowjackets Numerical Roster

No.	Name	Ht.	Pos.	Yr.	Hometown/Previous School
11	Jennifer Skrifvars*	5'9"	G	Sr.	Brea, CA/Cal State-San Bernardino
13	Alira Carpenter	5'8"	G	So.	Lewistown, MT/Fergus County HS
14	Jetton Meadors	5'8"	G	So.	Billings, MT/Senior HS
21	Rachel Hansen	5'9"	G	Fr.	Lolo, MT/Big Sky HS
22	Shantell Marquis	5'10"	G	Fr.	Cascade, MT/C.M. Russell HS
25	Dani Henderson	6'0"	F	Fr.	Reed point, MT/Reed Point HS
33	Kayla McPherson	5'11"	F	So.	Glendive, MT/Dawson County HS
41	Jen Smith	5'10"	F	So.	Belgrade, MT/Belgrade HS
50	Michelle Lieber*	6'0"	F	Sr.	Gillette, WY/Univ. of Wyoming
52	Laura Beach	6'2"	C	Fr.	Baker, MT/Baker HS
RS	Mandy Jacobs	5'10"	F	Fr.	Shepherd, MT/Shepherd HS

*Denotes Team Captain

Head Coach: Kevin Woodin (3rd Season)

Assistant Coaches: Natalie Visger (1st Season), Darryl Helmer (3rd Season)



Kevin Woodin (3rd year):

Woodin led the Yellowjackets to an 18-9 record overall for the 2005-2006 season and was 9-3 in the Heartland Conference.

That record earned the Jackets the Heartland Conference Co-Champion title for 2006. In his two-year tenure at Montana State-Billings, Woodin has compiled a 39-16 record for a .709 winning percentage. In his first season at the helm, Woodin guided the Lady Jackets to the NCAA West Region Tournament. The Libby, Montana native holds degrees from Carroll College and Seattle Pacific University.

Current Career Highs for the 2006-2007 Lady Yellowjackets

#11 Jennifer Skrifvars

Points: 13 vs. St. Edward's, 1/7/07

Rebounds: 9 vs. Texas-Permian Basin, 1/15/07

3-Point FGs: 2 vs. St. Edward's, 1/7/07

Assists: 6 vs. Western New Mexico, 1/19/05

Steals: 4 vs. Western New Mexico, 1/18/05; 4 vs. UTPB, 2/17/07

Blocks: 1 eight times

#13 Alira Carpenter

Points: 30 vs. Incarnate Word, 1/27/07

Rebounds: 7 three times

3-Point FGs: 7 vs. Oklahoma Panhandle, 12/30/06

Assists: 6 vs. Incarnate Word, 2/10/07

Steals: 3 four times

Blocks: 1 four times

#14 Jetton Meadors

Points: 26 vs. Oklahoma Panhandle, 1/12/07

Rebounds: 8 vs. Texas-Permian Basin, 2/17/07

3-Point FGs: 6 vs. Oklahoma Panhandle, 1/12/07

Assists: 8 vs. Texas-Permian Basin, 1/15/07

Steals: 4 vs. NW Missouri St., 11/30/06; 4 vs. Texas-Permian Basin, 1/15/07; 4 vs. St. Mary's, 1/24/07

Blocks: 2 vs. Lincoln, 2/2/07

#21 Rachel Hansen

Points: 9 vs. Rocky Mountain, 11/28/06

Rebounds: 2 vs. TX A&M-International, 1/4/06

3-Point FGs: 2 vs. Rocky Mountain, 11/28/06

Assists: 5 vs. MSU-Northern, 12/6/06

Steals: 2 vs. MSU-Northern, 12/6/06; 2 vs. Texas-Permian Basin, 1/15/07; 2 vs. Texas-Permian Basin, 2/17/07

#22 Shantell Marquis

Points: 16 vs. St. Mary's, 2/12/07

Rebounds: 11 vs. Oklahoma Panhandle, 1/13/07

3-Point FGs: 3 vs. Western Oregon, 11/17/06

Assists: 9 vs. Texas A&M-International, 1/4/06

Steals: 8 vs. Texas A&M-International, 2/22/07

Blocks: 4 vs. Texas A&M-International, 2/22/07

#25 Dani Henderson

Points: 17 vs. Texas-Permian Basin, 2/17/07

Rebounds: 12 vs. Texas-Permian Basin, 2/17/07

3-Point FGs: 2 vs. Oklahoma Panhandle, 1/12/07

Assists: 6 vs. Oklahoma Panhandle, 1/12/07

Steals: 3 vs. MSU-Northern, 12/6/06; 3 vs. St. Mary's, 2/8/07

Blocks: 2 vs. Oklahoma Panhandle, 1/13/07

#33 Kayla McPherson

Points: 25 vs. Texas-Permian Basin, 2/17/07

Rebounds: 6 vs. Oklahoma Panhandle St., 1/7/06

3-Point FGs: 6 vs. Western N.M., 1/4/06;

6 vs. Texas-Permian Basin, 2/17/07

Assists: 5 vs. Texas A&M-International, 1/4/07

Steals: 2 vs. Western Oregon, 11/17/06;

2 vs. TX A&M-International, 1/4/06

Blocks: 1 vs. Abilene Christian, 12/20/05;

1 vs. Abilene Christian, 12/19/06

#41 Jen Smith

Points: 26 vs. Oklahoma Panhandle, 1/12/07

Rebounds: 9 vs. St. Edward's, 2/10/06; 9 vs. Texas-Permian Basin, 1/15/07

3-Point FGs: 6 vs. Oklahoma Panhandle, 1/12/07

Assists: 6 vs. MSU-Northern, 12/6/06

Steals: 3 vs. St. Martin's, 12/16/05

Blocks: 1 four times

#50 Michelle Lieber

Points: 32 vs. St. Edward's, 2/24/07

Rebounds: 19 vs. Oklahoma Panhandle, 3/1/06

3-Point FGs: 1 three times

Assists: 4 five times

Steals: 4 vs. Seattle, 11/30/04; 4 vs. Mary, 12/15/06

Blocks: 4 vs. Lincoln, 1/20/07

#52 Laura Beach

Points: 5 vs. Lincoln, 2/3/07

Rebounds: 6 vs. Texas-Permian Basin, 2/17/07

3-Point FGs: n/a

Assists: 1 vs. Oklahoma Panhandle, 12/30/06; 1 vs. Incarnate Word, 2/10/07

Steals: 2 vs. St. Mary's, 2/12/07

Blocks: 2 vs. Oklahoma Panhandle, 12/30/06

The Last Time in Lady Yellowjacket Basketball.....

A player scored at least 40 points.....	Feb. 25, 1992 (Sherry McQuinn, 40 vs. Alaska-Fairbanks)
A player scored at least 30 points.....	Feb. 24, 2007 (Michelle Lieber, 32 vs. St. Edward's)
A player made at least 15 field goals.....	Feb. 19, 2000 (Codi Schmitz vs. Seattle)
A player made seven 3-pointers.....	Dec. 30, 2006 (Alira Carpenter vs. Oklahoma Panhandle)
A player made six 3-pointers.....	Feb. 17, 2007 (Kayla McPherson vs. Texas-Permian Basin)
A player made five 3-pointers.....	Feb. 17, 2007 (Alira Carpenter vs. Texas-Permian Basin)
A player made at least 15 free throws.....	Nov. 30, 2002 (Natalie Visger vs. St. Martin's)
A player made at least 10 free throws.....	Feb. 24, 2007 (Michelle Lieber, 12/15 vs. St. Edward's)
A player had at least 20 rebounds.....	Dec. 20, 2003 (Robyn Milne, 22 vs. Alaska-Fairbanks)
A player had at least 15 rebounds.....	Nov. 17, 2006 (Michelle Lieber, 16 vs. Western Oregon)
A player had at least 10 assists....	Feb. 19, 2000 (Deena Bartu, 13 vs. Seattle)
A player had at least 5 assists.....	Mar. 2, 2007 (Jennifer Skrifvars, 5 vs. St. Mary's)
A player had at least 5 blocked shots.....	Feb. 18, 2006 (Tanya Petersen, 6 vs. St. Mary's)
A player had at least 5 steals.....	Feb. 22, 2007 (Shantell Marquis, 8 vs. TX A&M-Int'l)
A player had a double-double.....	Mar. 3, 2007 (Michelle Lieber, 16pts/10rbs vs. Incarnate Word)
The team scored at least 100 points.....	Jan. 18, 2005 (100 vs. Western New Mexico)
The team scored at least 90 points.....	Feb. 17, 2007 (97 vs. Texas-Permian Basin)
The team allowed at least 100 points.....	Jan. 22, 1998 (102 by Seattle Pacific)
The team made at least 40 field goals.....	Feb. 19, 2000 (44 vs. Seattle)
The team shot over 60 % from the field.....	Dec. 2, 2005 (62.1% vs. Metro State)
The team shot over 50% from the field.....	Jan. 27, 2007 (57.8% vs. Incarnate Word)
The team made at least 15 3-pointers.....	Feb. 17, 2007 (15 vs. Texas-Permian Basin)
The team made at least 10 3-pointers.....	Feb. 8, 2007 (10 vs. St. Mary's)
The team made at least 30 free throws.....	Jan. 7, 2007 (31 vs. St. Edward's)
The team made at least 25 free throws.....	Jan. 27, 2007 (26 vs. Incarnate Word)
The team had at least 70 rebounds.....	Dec. 15, 1983 (74 vs. Great Falls)
The team had at least 60 rebounds.....	Nov. 17, 2006 (64 vs. Western Oregon)
The team had at least 40 assists.....	Nov. 22, 1983 (40 vs. Rocky Mountain)
The team had at least 30 assists.....	Dec. 16, 2005 (30 vs. St. Martin's)
The team had at least 25 assists.....	Feb. 17, 2007 (28 vs. Texas-Permian Basin)
The team had at least 20 assists.....	Jan. 4, 2007 (21 vs. TX A&M-Int'l)
The team had at least 10 blocked shots....	Jan. 3, 2005 (10 vs. Northwest Nazarene)
The team had at least 5 blocked shots....	Feb. 2, 2007 (5 vs. Lincoln)
The team had at least 20 steals.....	Feb. 14, 1998 (20 vs. Montana Tech)
The team had at least 15 steals.....	Jan. 4, 2007 (17 vs. TX A&M-Int'l)



#11 Skrifvars



#13 Carpenter



#14 Meadors



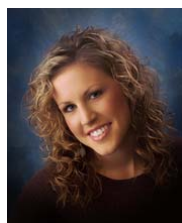
#21 Hansen



#22 Marquis



#25 Henderson



#30 Jacobs



#33 McPherson



#41 Smith



#50 Lieber



#52 Beach



06-07 Yellowjacket Basketball
Mont. St.-Billings Combined Team Statistics (as of Mar 05, 2007)
All games

RECORD:	OVERALL	HOME	AWAY	NEUTRAL
ALL GAMES.....	(22-9)	(13-1)	(5-8)	(4-0)
CONFERENCE.....	(7-3)	(5-0)	(2-3)	(0-0)
NON-CONFERENCE.....	(15-6)	(8-1)	(3-5)	(4-0)

## Player	GP-GS	Min--Avg	---TOTAL---		---3-PTS---		FT-FTA	Pct	---REBOUNDS---				PF	FO	A	TO	Blk	Stl	Pts	Avg
			FG-FGA	Pct	3FG-FGA	Pct			Off	Def	Tot	Avg								
11 Jennifer Skrifvars.	31-5	553 17.8	22-76	.289	4-20	.200	22-36	.611	19	50	69	2.2	43	0	56	32	3	20	70	2.3
13 Alira Carpenter....	31-31	950 30.6	189-437	.432	85-202	.421	62-70	.886	31	61	92	3.0	60	0	73	75	1	30	525	16.9
14 Jetton Meadors.....	31-30	807 26.0	75-198	.379	36-92	.391	48-66	.727	24	64	88	2.8	47	0	109	95	4	35	234	7.5
21 Rachel Hansen.....	28-0	267 9.5	11-43	.256	4-17	.235	4-7	.571	0	11	11	0.4	17	0	26	33	0	9	30	1.1
22 Shantell Marquis...	31-28	853 27.5	85-236	.360	15-57	.263	43-77	.558	29	117	146	4.7	55	1	87	97	20	71	228	7.4
25 Dani Henderson.....	31-28	733 23.6	71-167	.425	6-26	.231	50-65	.769	55	125	180	5.8	63	0	54	61	10	25	198	6.4
33 Kayla McPherson....	31-3	563 18.2	97-240	.404	64-158	.405	35-41	.854	15	47	62	2.0	23	1	27	36	1	13	293	9.5
41 Jen Smith.....	31-5	646 20.8	84-185	.454	12-38	.316	55-99	.556	45	75	120	3.9	52	1	42	51	3	14	235	7.6
50 Michelle Lieber....	25-25	771 30.8	137-195	.703	0-1	.000	146-194	.753	87	136	223	8.9	81	3	29	42	24	25	420	16.8
52 Laura Beach.....	21-0	109 5.2	8-23	.348	0-0	.000	9-17	.529	12	12	24	1.1	9	0	3	5	4	3	25	1.2
TEAM.....									53	66	119	3.8	0		5					

Total.....	31	6252	779-1800	.433	226-611	.370	474-672	.705	370	764	1134	36.6	450	6	506	532	70	245	2258	72.8
Opponents.....	31	6250	764-1889	.404	186-552	.337	333-481	.692	423	759	1182	38.1	573	-	449	586	85	246	2047	66.0

TEAM STATISTICS	MSUB	OPP	DATE	OPPONENT	W/L	SCORE	ATTEND
SCORING.....	2258	2047	11/17/06	WESTERN OREGON	W	77-62	317
Points per game.....	72.8	66.0	11/18/06	NORTH DAKOTA	L	62-71	334
Scoring margin.....	+6.8	-	11/28/06	ROCKY MOUNTAIN	W	85-69	227
FIELD GOALS-ATT.....	779-1800	764-1889	11/30/06	at NW Missouri State	L	82-95	521
Field goal pct.....	.433	.404	12/02/06	at Missouri Western	L	56-75	1521
3 POINT FG-ATT.....	226-611	186-552	12/6/06	MONT. ST.-NORTHERN	W	80-67	167
3-point FG pct.....	.370	.337	12/9/06	at Saint Martin's University	W	84-68	147
3-pt FG made per game..	7.3	6.0	12/15/06	UNIV. OF MARY	W	69-63	327
FREE THROWS-ATT.....	474-672	333-481	12/19/06	vs Abilene Christian	W	86-61	68
Free throw pct.....	.705	.692	12/20/06	vs Missouri Southern State	W	78-69	100
REBOUNDS.....	1134	1182	*12/30/06	OKLA. PANHANDLE ST.	W	84-60	820
Rebounds per game.....	36.6	38.1	01/04/06	TEXAS A&M-INTN'L	W	82-64	312
Rebounding margin.....	-1.5	-	*01/06/07	ST. EDWARD'S	W	76-57	370
ASSISTS.....	506	449	01/07/07	ST. EDWARD'S	W	78-61	316
Assists per game.....	16.3	14.5	*1-12-07	at Panhandle State Univ.	L	82-85	325
TURNOVERS.....	532	586	1-13-07	at Panhandle State Univ.	W	73-66	410
Turnovers per game.....	17.2	18.9	01/15-07	at Texas-Permian Basin	W	88-62	-
Turnover margin.....	+1.7	-	*01/20/07	LINCOLN UNIVERSITY	W	73-47	824
Assist/turnover ratio..	1.0	0.8	*01/24/07	ST. MARY'S (TEXAS)	W	69-67	917
STEALS.....	245	246	*01/27/07	INCARNATE WORD	W	89-81	644
Steals per game.....	7.9	7.9	01/28/07	INCARNATE WORD	W	66-65	480
BLOCKS.....	70	85	*02/02/07	at Lincoln University	L	62-66	105
Blocks per game.....	2.3	2.7	02/03/07	at Lincoln University	LOT	71-75	95
WINNING STREAK.....	3	-	*02/08/07	at St. Mary's (TX)	W	59-57	529
Home win streak.....	12	-	*02/10/07	at Incarnate Word	L	37-65	215
ATTENDANCE.....	6399	4842	02/12/07	at St. Mary's (TX)	L	48-51	350
Home games-Avg/Game....	14-457	13-360	2/17/07	TEXAS-PERMIAN BASIN	W	97-60	344
Neutral site-Avg/Game..	-	4-42	2/22/07	at Texas A&M International	L	66-75	129
			*02/24/07	at St. Edward's	W OT	70-67	327
SCORE BY PERIODS:	1st	2nd	OT	Total			
-----	-----	-----	-----	-----			
Mont. St.-Billings.....	1101	1142	15	- 2258	3-2-07	vs STMUW	W 67-64 -
Opponents.....	918	1113	16	- 2047	3-3-07	vs INCARNATE WORD UNIVERSITY	W 62-52 -

06-07 Yellowjacket Basketball
Mont. St.-Billings Game-by-Game Highs (as of Mar 05, 2007)
All games

Opponent	Date	Score	WL	POINTS	REBOUNDS	ASSISTS	STEALS	BLOCKED SHOTS
WESTERN OREGON	11/17/06	77-62	W	20-Michelle Lieb	16-Michelle Lieb	5-Alira Carpent	2-Kayla McPhers	1-Dani Henderso Shantell Marq
NORTH DAKOTA	11/18/06	62-71	L	15-Alira Carpent	7-Alira Carpent	5-Jetton Meador	2-Michelle Lieb	None
ROCKY MOUNTAIN	11/28/06	85-69	W	22-Michelle Lieb	7-Michelle Lieb	6-Jetton Meador	3-Alira Carpent Jetton Meador Shantell Marq	2-Michelle Lieb
at NW Missouri State	11/30/06	82-95	L	20-Alira Carpent	13-Michelle Lieb	2-Alira Carpent	4-Jetton Meador	1-Shantell Marq
at Missouri Western	12/02/06	56-75	L	22-Michelle Lieb	7-Michelle Lieb	3-Jetton Meador Alira Carpent Michelle Lieb	1-Kayla McPhers	1-Shantell Marq
MONT. ST.-NORTHERN	12/6/06	80-67	W	28-Alira Carpent	9-Shantell Marq	6-Jen Smith	3-Dani Henderso Alira Carpent	1-Alira Carpent
at Saint Martin's Univers	12/9/06	84-68	W	15-Jen Smith	11-Dani Henderso Michelle Lieb	5-Jetton Meador Shantell Marq	2-Shantell Marq Dani Henderso	2-Shantell Marq
UNIV. OF MARY	12/15/06	69-63	W	24-Alira Carpent	6-Shantell Marq	5-Jetton Meador	4-Michelle Lieb	2-Michelle Lieb
vs Abilene Christian	12/19/06	86-61	W	18-Alira Carpent	8-Michelle Lieb	4-Alira Carpent Rachel Hansen Jetton Meador	3-Michelle Lieb Shantell Marq	1-Kayla McPhers
vs Missouri Southern Stat	12/20/06	78-69	W	21-Michelle Lieb Kayla McPhers	12-Michelle Lieb	6-Jetton Meador	2-Shantell Marq Dani Henderso	3-Michelle Lieb
OKLA. PANHANDLE ST.	12/30/06	84-60	W	26-Alira Carpent	7-Dani Henderso	7-Shantell Marq	3-Shantell Marq Alira Carpent	2-Laura Beach
TEXAS A&M-INTN'L	01/04/06	82-64	W	18-Jen Smith Michelle Lieb	10-Michelle Lieb	9-Shantell Marq	5-Shantell Marq	1-Michelle Lieb
ST. EDWARD'S	01/06/07	76-57	W	28-Alira Carpent	13-Michelle Lieb	5-Alira Carpent Shantell Marq	3-Shantell Marq	1-Michelle Lieb
ST. EDWARD'S	01/07/07	78-61	W	19-Alira Carpent	6-Michelle Lieb	7-Jetton Meador	2-Shantell Marq	1-Dani Henderso
at Panhandle State Univ.	1-12-07	82-85	L	26-Jetton Meador	13-Michelle Lieb	6-Dani Henderso	2-Shantell Marq	2-Shantell Marq
at Panhandle State Univ.	1-13-07	73-66	W	12-Alira Carpent	11-Shantell Marq	7-Jetton Meador	2-Jetton Meador Shantell Marq	2-Dani Henderso
at Texas-Permian Basin	01/15-07	88-62	W	20-Michelle Lieb Kayla McPhers	9-Jennifer Skri	8-Jetton Meador	4-Jetton Meador	1-Michelle Lieb Dani Henderso
LINCOLN UNIVERSITY	01/20/07	73-47	W	19-Alira Carpent	9-Michelle Lieb	4-Jennifer Skri Shantell Marq Kayla McPhers	4-Shantell Marq	4-Michelle Lieb
ST. MARY'S (TEXAS)	01/24/07	69-67	W	23-Michelle Lieb	7-Dani Henderso	4-Jetton Meador Jen Smith	4-Jetton Meador	1-Jetton Meador Michelle Lieb Dani Henderso
INCARNATE WORD	01/27/07	89-81	W	30-Alira Carpent	10-Michelle Lieb	4-Shantell Marq Jetton Meador	2-Shantell Marq	1-Shantell Marq
INCARNATE WORD	01/28/07	66-65	W	16-Alira Carpent	9-Dani Henderso	6-Jetton Meador	1-Shantell Marq	2-Shantell Marq
at Lincoln University	02/02/07	62-66	L	15-Michelle Lieb	11-Dani Henderso	4-Dani Henderso	2-Shantell Marq Jetton Meador	2-Jetton Meador
at Lincoln University	02/03/07	71-75	OL	20-Alira Carpent	14-Michelle Lieb	4-Dani Henderso	2-Jen Smith Michelle Lieb	1-Shantell Marq Michelle Lieb
at St. Mary's (TX)	02/08/07	59-57	W	23-Alira Carpent	7-Dani Henderso	4-Jennifer Skri Alira Carpent	3-Dani Henderso	1-Jen Smith Jennifer Skri
at Incarnate Word	02/10/07	37-65	L	13-Jen Smith	7-Jen Smith	6-Alira Carpent	3-Alira Carpent	1-Dani Henderso
at St. Mary's (TX)	02/12/07	48-51	L	16-Shantell Marq	10-Shantell Marq	3-Jen Smith	3-Shantell Marq	1-Jennifer Skri Shantell Marq
TEXAS-PERMIAN BASIN	2/17/07	97-60	W	29-Alira Carpent	12-Dani Henderso	7-Shantell Marq	4-Jennifer Skri	1-Laura Beach

06-07 Yellowjacket Basketball

Mont. St.-Billings Game-by-Game Highs (as of Mar 05, 2007)

All games

Opponent	Date	Score	WL	POINTS	REBOUNDS	ASSISTS	STEALS	BLOCKED SHOTS
								Shantell Marq
at Texas A&M Internationa	2/22/07	66-75	L	17-Alira Carpent	7-Dani Henderso	5-Jennifer Skri	8-Shantell Marq	4-Shantell Marq
at St. Edward's	02/24/07	70-67	WO	32-Michelle Lieb	12-Michelle Lieb	4-Shantell Marq	5-Shantell Marq	2-Michelle Lieb
vs STMUW	3-2-07	67-64	W	18-Michelle Lieb	10-Michelle Lieb	5-Jennifer Skri	3-Michelle Lieb	1-Michelle Lieb
								Dani Henderso
vs INCARNATE WORD UNIVERS	3-3-07	62-52	W	16-Michelle Lieb	10-Michelle Lieb	2-Jen Smith	2-Dani Henderso	3-Michelle Lieb
						Alira Carpent		
						Jennifer Skri		
						Dani Henderso		

06-07 Yellowjacket Basketball

Mont. St.-Billings Game-by-Game Points-Rebounds-Assists (as of Mar 05, 2007)

All games

Opponent	Date	Score	WL	11	13	14	21	22	25	33	41	50
				SKRIFVARS	CARPENTER	MEADORS,J	HANSEN,RA	MARQUIS,S	HENDERSON	MCPHERSON	SMITH,JEN	LIEBER,MI
WESTERN OREGON	11/17/06	77-62	W	0- 3- 2	12- 5- 5	8- 7- 3	0- 1- 1	10- 8- 1	15-11- 0	7- 0- 1	5- 4- 1	20-16- 4
NORTH DAKOTA	11/18/06	62-71	L	0- 0- 0	15- 7- 1	8- 2- 5	0- 0- 0	4- 6- 1	6- 6- 0	9- 2- 0	8- 3- 1	12- 5- 1
ROCKY MOUNTAIN	11/28/06	85-69	W	0- 2- 1	19- 3- 2	3- 4- 6	9- 1- 3	5- 3- 2	0- 3- 2	15- 2- 2	11- 2- 2	22- 7- 3
at NW Missouri State	11/30/06	82-95	L	1- 2- 1	20- 2- 2	14- 2- 1	2- 1- 1	8- 2- 1	2- 6- 1	13- 4- 1	10- 8- 1	12-13- 1
at Missouri Western	12/02/06	56-75	L	0- 6- 1	7- 1- 3	10- 4- 3	5- 0- 0	0- 6- 2	4- 3- 1	2- 1- 0	5- 1- 1	22- 7- 3
MONT. ST.-NORTHERN	12/6/06	80-67	W	0- 1- 1	28- 2- 2	16- 2- 1	0- 1- 5	4- 9- 5	10- 3- 0	6- 2- 0	2- 4- 6	12- 4- 3
at Saint Martin's Univ	12/9/06	84-68	W	3- 2- 1	14- 1- 4	14- 5- 5	0- 0- 1	12- 5- 5	7-11- 1	5- 0- 0	15- 6- 1	14-11- 1
UNIV. OF MARY	12/15/06	69-63	W	2- 3- 1	24- 2- 2	11- 3- 5	0- 0- 1	13- 6- 1	7- 5- 3	0- 1- 1	7- 3- 0	5- 4- 0
vs Abilene Christian	12/19/06	86-61	W	4- 0- 0	18- 4- 4	7- 2- 4	0- 1- 4	6- 2- 2	9- 2- 0	13- 2- 1	15- 4- 1	12- 8- 1
vs Missouri Southern St	12/20/06	78-69	W	0- 1- 1	16- 3- 3	7- 3- 6	0- 0- 0	2- 3- 1	5- 3- 0	21- 3- 1	4- 4- 0	21-12- 1
OKLA. PANHANDLE ST.	12/30/06	84-60	W	4- 2- 1	26- 2- 2	0- 1- 0	0- 1- 2	13- 3- 7	5- 7- 3	12- 4- 2	3- 1- 3	19- 4- 1
TEXAS A&M-INTN'L	01/04/06	82-64	W	0- 1- 2	9- 4- 3	10- 1- 1	5- 2- 0	2- 1- 9	7- 8- 2	13- 2- 2	18- 7- 2	18-10- 0
ST. EDWARD'S	01/06/07	76-57	W	2- 1- 1	28- 3- 5	1- 0- 3	0- 0- 0	8- 4- 5	6- 4- 2	12- 2- 0	4- 2- 0	13-13- 1
ST. EDWARD'S	01/07/07	78-61	W	13- 1- 1	19- 1- 2	5- 3- 7	0- 0- 1	0- 4- 1	2- 2- 2	14- 2- 0	11- 4- 1	14- 6- 0
at Panhandle State Univ	1-12-07	82-85	L	0- 1- 2	7- 1- 3	26- 1- 3	0- 0- 0	13- 6- 5	8- 8- 6	6- 3- 2	3- 1- 0	19-13- 0
at Panhandle State Univ	1-13-07	73-66	W	1- 0- 3	12- 3- 1	6- 1- 7	4- 0- 0	11-11- 2	11- 5- 1	13- 1- 0	9- 5- 0	8- 6- 0
at Texas-Permian Basin	01/15-07	88-62	W	2- 9- 3	18- 3- 4	8- 5- 8	4- 0- 3	7- 4- 2	2- 5- 2	20- 2- 1	7- 6- 2	20- 6- 4
LINCOLN UNIVERSITY	01/20/07	73-47	W	3- 0- 4	19- 2- 2	9- 2- 3	0- 2- 0	8- 2- 4	2- 2- 0	9- 3- 4	7- 0- 1	14- 9- 0
ST. MARY'S (TEXAS)	01/24/07	69-67	W	2- 0- 1	13- 4- 0	7- 5- 4	DNP	7- 3- 3	5- 7- 2	0- 0- 0	12- 4- 4	23- 5- 0
INCARNATE WORD	01/27/07	89-81	W	2- 4- 3	30- 3- 1	3- 2- 4	0- 0- 1	13- 2- 4	8- 5- 2	8- 2- 1	3- 1- 1	22-10- 1
INCARNATE WORD	01/28/07	66-65	W	0- 1- 0	16- 2- 2	4- 4- 6	0- 0- 0	11- 3- 1	14- 9- 2	6- 2- 0	15- 7- 1	DNP
at Lincoln University	02/02/07	62-66	L	0- 2- 1	13- 2- 1	13- 7- 1	0- 0- 1	11- 3- 1	6-11- 4	4- 2- 1	0- 1- 0	15- 8- 0
at Lincoln University	02/03/07	71-75	OL	6- 1- 2	20- 7- 1	5- 1- 2	0- 0- 1	4- 6- 2	4- 4- 4	3- 0- 0	7- 1- 1	17-14- 2
at St. Mary's (TX)	02/08/07	59-57	W	2- 4- 4	23- 6- 4	6- 1- 3	0- 0- 0	1- 3- 2	7- 7- 1	16- 4- 0	4- 6- 2	DNP
at Incarnate Word	02/10/07	37-65	L	2- 2- 0	5- 3- 6	4- 4- 1	0- 0- 0	4- 5- 0	6- 4- 1	3- 4- 0	13- 7- 0	DNP
at St. Mary's (TX)	02/12/07	48-51	L	4- 1- 1	14- 3- 1	0- 3- 1	1- 1- 0	16-10- 0	4- 2- 1	0- 1- 1	6- 6- 3	DNP
TEXAS-PERMIAN BASIN	2/17/07	97-60	W	7- 4- 5	29- 4- 2	9- 8- 6	0- 0- 1	4- 3- 7	17-12- 3	25- 2- 2	5- 4- 2	DNP
at Texas A&M Internatio	2/22/07	66-75	L	2- 5- 5	17- 0- 0	0- 3- 2	0- 0- 0	11- 6- 2	10- 7- 4	13- 2- 2	11- 6- 3	DNP
at St. Edward's	02/24/07	70-67	WO	2- 3- 1	9- 4- 1	6- 1- 3	DNP	6- 7- 4	7- 8- 3	8- 5- 1	0- 1- 0	32-12- 0
vs STMUW	3-2-07	67-64	W	4- 2- 5	14- 3- 2	12- 1- 4	DNP	7- 5- 4	2- 3- 0	10- 2- 0	0- 3- 0	18-10- 2
vs INCARNATE WORD UNIVE	3-3-07	62-52	W	2- 5- 2	11- 2- 2	2- 0- 1	0- 0- 0	7- 5- 1	0- 7- 2	9- 0- 1	15- 8- 2	16-10- 0

52

Opponent	Date	Score	WL	BEACH,LAU
WESTERN OREGON	11/17/06	77-62	W	0- 2- 0
NORTH DAKOTA	11/18/06	62-71	L	DNP
ROCKY MOUNTAIN	11/28/06	85-69	W	1- 1- 0
at NW Missouri State	11/30/06	82-95	L	DNP
at Missouri Western	12/02/06	56-75	L	1- 0- 0
MONT. ST.-NORTHERN	12/6/06	80-67	W	2- 1- 0
at Saint Martin's Univ	12/9/06	84-68	W	0- 0- 0
UNIV. OF MARY	12/15/06	69-63	W	0- 0- 0
vs Abilene Christian	12/19/06	86-61	W	2- 2- 0
vs Missouri Southern St	12/20/06	78-69	W	2- 0- 0
OKLA. PANHANDLE ST.	12/30/06	84-60	W	2- 3- 1
TEXAS A&M-INTN'L	01/04/06	82-64	W	0- 1- 0
ST. EDWARD'S	01/06/07	76-57	W	2- 0- 0
ST. EDWARD'S	01/07/07	78-61	W	0- 0- 0
at Panhandle State Univ	1-12-07	82-85	L	DNP
at Panhandle State Univ	1-13-07	73-66	W	DNP
at Texas-Permian Basin	01/15-07	88-62	W	DNP
LINCOLN UNIVERSITY	01/20/07	73-47	W	2- 1- 1
ST. MARY'S (TEXAS)	01/24/07	69-67	W	DNP
INCARNATE WORD	01/27/07	89-81	W	0- 0- 0
INCARNATE WORD	01/28/07	66-65	W	0- 1- 0
at Lincoln University	02/02/07	62-66	L	DNP
at Lincoln University	02/03/07	71-75	OL	5- 1- 0
at St. Mary's (TX)	02/08/07	59-57	W	DNP
at Incarnate Word	02/10/07	37-65	L	0- 2- 1
at St. Mary's (TX)	02/12/07	48-51	L	3- 1- 0
TEXAS-PERMIAN BASIN	2/17/07	97-60	W	1- 6- 0
at Texas A&M Internatio	2/22/07	66-75	L	2- 2- 0
at St. Edward's	02/24/07	70-67	WO	DNP
vs STMUW	3-2-07	67-64	W	DNP
vs INCARNATE WORD UNIVE	3-3-07	62-52	W	0- 0- 0