



Women's Basketball

Lady Yellowjacket Basketball 2006-2007

Weekly Release #15 – February 26, 2007

This Week's Events:

Mar. 2 - Heartland Conference Semifinals, 11 a.m. MST, Denton, TX

Mar. 3 - Heartland Conference Finals, 2 p.m. MST, Denton, TX

Heartland Conference Tournament Teams:

#1 Montana State University-Billings

The Yellowjackets are the HLC regular season champions with a 7-3 league record. They are 20-9 overall. Alira Carpenter leads the league in scoring at 17.2 ppg. Michelle Lieber ranks second in the league in scoring at 16.8 ppg and leads the HLC in rebounding at 8.8 rpg. MSUB is the top scoring and 3-point shooting team in the Heartland, averaging 73.4 points and 7.62 3-pointers per game. They rank fifth in the conference for scoring defense (66.6) and field goal percentage defense (40.7). In league games against HLC Tournament teams this season, MSUB was 2-0 against St. Edward's, 1-1 against Incarnate Word, and 2-0 against St. Mary's.

#2 St. Edward's University

The Hilltoppers are 9-17 overall and 6-4 in the Heartland Conference. No player averages double figures for scoring, but five players average at least seven points a game. Sophia Holguin leads the team in scoring at 8.5 ppg. Sara Head leads the Toppers in rebounding at 6.8 rpg. St. Edward's ranks fifth in the Heartland for scoring at 57.2 ppg. They are second in the league for both scoring defense (60.5) and field goal percentage defense (39.7). In league games against HLC Tournament teams this season, SEU was 0-2 against MSU-Billings, 2-0 against Incarnate Word, and 0-2 against St. Mary's.

#3 University of the Incarnate Word

The Cardinals are 14-13 overall and 6-4 in the Heartland Conference. Nia Torru leads the team and ranks fifth in the conference for scoring at 14.3 ppg. She is also fifth in the league for rebounding (6.6) and seventh for 3-pointers per game (1.67). Ieasha Sledge averages 8.8 points and 2.6 assists per game. The Cardinals rank third in the Heartland for scoring offense (62.3). They are the hardest team to score on in the league, giving up just 59.7 ppg, and they rank first in the league for free throw percentage (72.5). In league games against HLC Tournament teams this season, UIW was 1-1 against MSU-Billings, 0-2 against St. Edward's, and 1-1 against St. Mary's.

#4 St. Mary's University

The Rattlers are 12-15 overall and 5-5 in the Heartland Conference. Natalie Gamez leads the team and ranks fourth in the conference for scoring at 14.8 ppg. She is also fifth in the league for 3-pointers made per game (1.85). Charlena Rodez adds 13.4 ppg and 5.9 rpg. Ashton Benford ranks second in the conference for rebounding at 8.3 rpg and also averages 9.8 ppg. The Rattlers rank fourth in the conference for scoring at 60.9 ppg. They are third in the league for scoring defense (62.7) and first for field goal percentage defense (38.8). In league games against HLC Tournament teams this season, STMU was 0-2 against MSU-Billings, 2-0 against St. Edwards, and 1-1 against Incarnate Word.

2006-2007 Schedule and Results

20-9 overall, 7-3 HLC

<u>Date</u>	<u>Opponent</u>	<u>Time/Result</u>
11/17	Western Oregon	W, 77-62
11/18	North Dakota	L, 71-62
11/28	Rocky Mountain	W, 85-69
11/30	at Northwest Missouri St.	L, 95-82
12/2	at Missouri Western St.	L, 75-56
12/6	Mont. St.-Northern	W, 80-67
12/9	at St. Martin's	W, 84-68
12/15	University of Mary	W, 69-63
12/19	vs. Abilene Christian [^]	W, 86-61
12/20	vs. Missouri Southern [^]	W, 78-69
12/30	Oklahoma Panhandle *	W, 80-64
1/4	Texas A&M – Inter.	W, 82-64
1/6	St. Edward's *	W, 76-57
1/7	St. Edward's	W, 78-61
1/12	at Oklahoma Panhandle *	L, 85-82
1/13	at Oklahoma Panhandle	W, 73-66
1/15	at Texas – Permian Basin	W, 88-62
1/20	Lincoln University *	W, 73-47
1/24	St. Mary's University *	W, 69-67
1/27	Incarnate Word*	W, 89-81
1/28	Incarnate Word	W, 66-65
2/2	at Lincoln University *	L, 66-62
2/3	at Lincoln University	L, 75-71 OT
2/8	at St. Mary's *	W, 59-57
2/10	at Incarnate Word *	L, 65-37
2/12	at St. Mary's	L, 51-48
2/17	Texas – Permian Basin	W, 97-60
2/22	at Texas A&M – Inter.	L, 75-66
2/24	at St. Edward's *	W, 70-67 OT

Heartland Conference Tournament

3/2	Semifinals (Denton, TX)	12:00 p.m. CST
3/3	Finals (Denton, TX)	3:00 p.m. CST

Home Games in Bold played at Alterowitz Gym

Exhibition Game

* Heartland Conference Game

[^] Hoop 'N Surf Classic, Honolulu, HI

All times local to game site

Lady Yellowjackets on the Airwaves

All Yellowjacket games at the Heartland Conference Tournament will be streamed live on the web at www.msubillings.edu/athletics by play-by-play man Pat Boland. Because of a scheduling conflict, Friday's semifinal game will be web streamed only and will not air on AM 970. Saturday's championship game will be aired on AM 970 in Billings and on the web. All games at the tournament will also be video streamed at www.summitticket.com

Week in Review

The Yellowjackets split a pair of road games last week, falling 75-66 at Texas A&M-International on Thursday and winning 70-67 in overtime at St. Edward's on Saturday. Thursday's non-conference loss did not affect the Jackets' season. Saturday's win gave MSUB the outright Heartland Conference regular season championship and the No. 1 seed in this week's Heartland Conference Tournament.

In Thursday's loss, the Jackets shot just 37 percent from the field and 21 percent from 3-point range. They were out-rebounded 48-33 and outscored at the free throw line 20-5. Alira Carpenter scored a game-high 17 points. Kayla McPherson netted 13 off the bench. Shantell Marquis and Jen Smith each scored 11, and Dani Henderson had 10 points. Marquis had career highs with four blocks and eight steals. The eight steals missed the school record by just one.

On Saturday, the Jackets rallied from a seven-point second half deficit to force overtime, where they outscored the Hilltoppers 12-9. Michelle Lieber returned to the floor after missing six of the last seven games because of injury. She scored a career-high 32 points on 10-of-12 shooting from the field and 12-of-15 from the line. She also grabbed a dozen rebounds. No other player scored in double figures for MSUB.

Tip Ins

In their two years in the Heartland, the Yellowjackets won two regular season titles. They shared the 2005-06 regular season crown with St. Edward's and won the 2006-07 title outright....Michelle Lieber has played her biggest games when the spotlight has been the brightest. Last year in the first round of the conference playoffs she scored 31 points and pulled down 19 rebounds, both career highs. With the conference title on the line last Saturday, she scored a career-best 32 points to carry the Jackets to the crown....Sophomore guard Alira Carpenter broke the single season school record for 3-pointers a couple weeks ago. Last week she became the tenth player in school history to score 500 points in a season. No Lady Yellowjacket has posted a 500-point season since Megan Dickerson scored 510 in 1997-98....Both of the Yellowjackets' games at the Heartland Conference Tournament will be streamed on the Yellowjacket Athletics website by Yellowjacket play-by-play man Pat Boland. Because of a programming conflict, Friday's semifinal game at 11:00 a.m. MST will not be aired on AM 970 in Billings. Saturday's championship game at 2:00 p.m. MST will be broadcast on both AM 970 and on the web. In addition to Pat Boland's audio, Yellowjacket fans can watch video of the games at www.summitticket.com.

MSUB Heartland Conference Individual Statistical Rankings (as of 2/25/07):

Scoring Average – Carpenter, 1st (17.2); Lieber, 2nd (16.8); McPherson, 12th (9.4); Meadors, 20th (7.6); Smith, 21st (7.6); Marquis, 24th (7.4); Henderson, 28th (6.8). **Rebounds p/g** – Lieber, 1st (8.8); Henderson, 7th (5.9); Marquis, 12th (4.7). **FG%** - Lieber, 1st (.699); Carpenter, 4th (.439); McPherson, 8th (.394). **Assists p/g** – Meadors, 2nd (3.59); Marquis, 5th (2.83); Carpenter, 9th (2.38). **FT%** - Lieber, 4th (.773). **Steals** - Marquis, 2nd (2.34). **3FG%** - Carpenter, 1st (.426); Meadors, 3rd (.398); McPherson, 4th (.396). **3FG p/g** – Carpenter, 1st (2.90); McPherson, 4th (2.10); Meadors, 11th (1.21). **Blocked Shots p/g** - Lieber, 3rd (0.87); Marquis, 5th (0.69). **Assist/Turnover Ratio** – Meadors, 2nd (1.18). **Off. Rebs p/g** – Lieber, 1st (3.65); Henderson, 8th (1.86). **Def. Rebs p/g** – Lieber, 4th (5.17); Henderson, 7th (4.00); Marquis, 9th (3.72).

MSUB Heartland Conference Team Statistical Rankings (as of 2/25/07):

Scoring Offense - 1st, 73.4. **Scoring Defense** - 5th, 66.6. **Scoring Margin** - 1st, +6.8. **FT%** - 2nd, .715. **FG%** - 1st, .431. **FG% Defense** - 5th, .407. **3FG p/g** - 1st, 7.62. **3FG%** - 1st, .372. **3FG% Defense** - 5th, .3546. **Rebounds p/g** - 4th, 36.5. **Off. Rebs p/g** - 4th, 12.17. **Def. Rebs p/g** - 3rd, 24.34. **Rebound Margin** - 4th, -1.9. **Blocks p/g** - 4th, 2.24. **Assists p/g** - 1st, 16.48. **Steals p/g** - 5th, 7.97. **Turnover Margin** - 2nd, +1.97. **Assist/Turnover Ratio** - 1st, 0.96.

NCAA National Team Statistical Rankings (as of 2/18/07):

Scoring Offense - 31st, 73.8. **Scoring Margin** - 63rd, +7.6. **FG%** - 45th, .435. **FT%** - 79th, .716. **3FG p/g** - 10th, 7.8. **3FG%** - 6th, .385. **Assists p/g** - 34th, 16.6.

NCAA National Individual Statistical Rankings (as of 2/18/07):

Scoring Average – Carpenter, 44th (17.6); Lieber, 73rd (16.1). **Rebounds p/g** – Lieber, 59th (8.7). **FG%** - Lieber, 1st (.689). **3FG%** - Carpenter, 8th (.448); McPherson, 37th (.404). **3FG p/g** – Carpenter, 8th (3.0); McPherson, 84th (2.1).

Heartland Conf. Standings (through 2/25/07)

<u>Team</u>	<u>All</u>	<u>Conf</u>
1. Montana State-Billings	20-9	7-3
2. St. Edward's	9-17	6-4
3. Incarnate Word	14-13	6-4
4. St. Mary's	12-15	5-5
5. Oklahoma Panhandle State	8-19	3-7
6. Lincoln University	8-19	3-7

NCAA South Central Region Poll (released 2/21/07)

1. Missouri Western State
2. West Texas A&M
3. Washburn
4. Emporia State
5. Texas A&M-Commerce
6. Tarleton State
7. Angelo State
8. Northwest Missouri State
9. Central Oklahoma
10. Southeastern Oklahoma State

This Week's Games in the Heartland

Mar. 2 - Heartland Conference Semifinals, Denton, Texas
#1 Montana State-Billings vs. #4 St. Mary's, 12:00 p.m. CST
#2 St. Edward's vs. #3 Incarnate Word, 2:30 p.m. CST

Mar. 3 - Heartland Conference Finals, Denton, Texas
Winner game #1 vs. Winner game #2, 3:00 p.m. CST

Current Lady Jackets in the School Record Books

Michelle Lieber

Career: 1st for FG% (66.9)
4th for rebounds per game (9.1)
7th for blocks (59) [needs 64 for 6th]
7th for rebounds (706) [needs 734 for 6th]
9th for points per game (13.5)
7th for free throws (277) [needs 280 for 6th]
10th for FT% (74.7)
18th for points (1055) [needs 1,066 for 17th]

Season: 1st for FG % (69.9 in 06-07)
2nd for FG% (67.1 in 05-06)
3rd for FG % (63.4 in 04-05)
3rd for FT's (140 in 06-07) [needs 183 for 2nd]
7th for rebounds and rpg (275, 10.2 in 05-06)
16th for blocks (25 in 05-06)

Game: t-2nd for FG% (91.7%, 11/12)
5th for FG% (87.5%, 14/16)
t-15th for points (32)
t-20th for points (31)
t-6th for FT's (12)
t-10th for FT's (11)
t-5th for FT% (9/10)
t-10th for rebounds (19)

Alira Carpenter

Career: 5th for 3-Ptrs. (129) [needs 149 for 4th]
2nd for 3-Pt. (.403)
6th for points per game (14.6)
24th for points (816) [needs 835 for 23rd]

Season: 1st for 3-Ptrs. (84 in 06-07)
t-9th for points (500 in 06-07)
12th for 3-Ptrs. (45 in 05-06)

Game: t-31st for points (30)
t-1st for 3-Ptrs. (7)
t-2nd for 3-Ptrs. (6)
t-13 for 3-Ptrs. (5)
t-1st 3-Pt.% (5/5)
t-8th for 3 Pt.% (4/5)

Kayla McPherson

Career: 5th for 3 Pt. % (.397)
12th for 3-Ptrs. (81) [needs 87 for 11th]

Season: t-7th for 3-Ptrs. (61 in 06-07) [needs 62 for 5th]
11th for 3 Pt.% (40.0 in 05-06)

Game: t-4th for 3-Ptrs (6) and 3 Pt.% (6/7)

Jetton Meadors

Career: 8th for 3 Pt. % (.379)

Game: t-8th for 3 Pt.% (4/5)
t-4th for 3-Ptr. (6)



2006-2007 Yellowjacket Players and Coaches

2006-2007 Lady Yellowjackets Numerical Roster

No.	Name	Ht.	Pos.	Yr.	Hometown/Previous School
11	Jennifer Skrifvars*	5'9"	G	Sr.	Brea, CA/Cal State-San Bernardino
13	Alira Carpenter	5'8"	G	So.	Lewistown, MT/Fergus County HS
14	Jetton Meadors	5'8"	G	So.	Billings, MT/Senior HS
21	Rachel Hansen	5'9"	G	Fr.	Lolo, MT/Big Sky HS
22	Shantell Marquis	5'10"	G	Fr.	Cascade, MT/C.M. Russell HS
25	Dani Henderson	6'0"	F	Fr.	Reed point, MT/Reed Point HS
33	Kayla McPherson	5'11"	F	So.	Glendive, MT/Dawson County HS
41	Jen Smith	5'10"	F	So.	Belgrade, MT/Belgrade HS
50	Michelle Lieber*	6'0"	F	Sr.	Gillette, WY/Univ. of Wyoming
52	Laura Beach	6'2"	C	Fr.	Baker, MT/Baker HS
RS	Mandy Jacobs	5'10"	F	Fr.	Shepherd, MT/Shepherd HS

*Denotes Team Captain

Head Coach: Kevin Woodin (3rd Season)

Assistant Coaches: Natalie Visger (1st Season), Darryl Helmer (3rd Season)



Kevin Woodin (3rd year):

Woodin led the Yellowjackets to an 18-9 record overall for the 2005-2006 season and was 9-3 in the Heartland Conference.

That record earned the Jackets the Heartland Conference Co-Champion title for 2006. In his two-year tenure at Montana State-Billings, Woodin has compiled a 39-16 record for a .709 winning percentage. In his first season at the helm, Woodin guided the Lady Jackets to the NCAA West Region Tournament. The Libby, Montana native holds degrees from Carroll College and Seattle Pacific University.

Current Career Highs for the 2006-2007 Lady Yellowjackets

#11 Jennifer Skrifvars

Points: 13 vs. St. Edward's, 1/7/07

Rebounds: 9 vs. Texas-Permian Basin, 1/15/07

3-Point FGs: 2 vs. St. Edward's, 1/7/07

Assists: 6 vs. Western New Mexico, 1/19/05

Steals: 4 vs. Western New Mexico, 1/18/05; 4 vs. UTPB, 2/17/07

Blocks: 1 eight times

#13 Alira Carpenter

Points: 30 vs. Incarnate Word, 1/27/07

Rebounds: 7 three times

3-Point FGs: 7 vs. Oklahoma Panhandle, 12/30/06

Assists: 6 vs. Incarnate Word, 2/10/07

Steals: 3 four times

Blocks: 1 four times

#14 Jetton Meadors

Points: 26 vs. Oklahoma Panhandle, 1/12/07

Rebounds: 8 vs. Texas-Permian Basin, 2/17/07

3-Point FGs: 6 vs. Oklahoma Panhandle, 1/12/07

Assists: 8 vs. Texas-Permian Basin, 1/15/07

Steals: 4 vs. NW Missouri St., 11/30/06; 4 vs. Texas-Permian Basin, 1/15/07; 4 vs. St. Mary's, 1/24/07

Blocks: 2 vs. Lincoln, 2/2/07

#21 Rachel Hansen

Points: 9 vs. Rocky Mountain, 11/28/06

Rebounds: 2 vs. TX A&M-International, 1/4/06

3-Point FGs: 2 vs. Rocky Mountain, 11/28/06

Assists: 5 vs. MSU-Northern, 12/6/06

Steals: 2 vs. MSU-Northern, 12/6/06; 2 vs. Texas-Permian Basin, 1/15/07; 2 vs. Texas-Permian Basin, 2/17/07

#22 Shantell Marquis

Points: 16 vs. St. Mary's, 2/12/07

Rebounds: 11 vs. Oklahoma Panhandle, 1/13/07

3-Point FGs: 3 vs. Western Oregon, 11/17/06

Assists: 9 vs. Texas A&M-International, 1/4/06

Steals: 8 vs. Texas A&M-International, 2/22/07

Blocks: 4 vs. Texas A&M-International, 2/22/07

#25 Dani Henderson

Points: 17 vs. Texas-Permian Basin, 2/17/07

Rebounds: 12 vs. Texas-Permian Basin, 2/17/07

3-Point FGs: 2 vs. Oklahoma Panhandle, 1/12/07

Assists: 6 vs. Oklahoma Panhandle, 1/12/07

Steals: 3 vs. MSU-Northern, 12/6/06; 3 vs. St. Mary's, 2/8/07

Blocks: 2 vs. Oklahoma Panhandle, 1/13/07

#33 Kayla McPherson

Points: 25 vs. Texas-Permian Basin, 2/17/07

Rebounds: 6 vs. Oklahoma Panhandle St., 1/7/06

3-Point FGs: 6 vs. Western N.M., 1/4/06;

6 vs. Texas-Permian Basin, 2/17/07

Assists: 5 vs. Texas A&M-International, 1/4/07

Steals: 2 vs. Western Oregon, 11/17/06;

2 vs. TX A&M-International, 1/4/06

Blocks: 1 vs. Abilene Christian, 12/20/05;

1 vs. Abilene Christian, 12/19/06

#41 Jen Smith

Points: 26 vs. Oklahoma Panhandle, 1/12/07

Rebounds: 9 vs. St. Edward's, 2/10/06; 9 vs. Texas-Permian Basin, 1/15/07

3-Point FGs: 6 vs. Oklahoma Panhandle, 1/12/07

Assists: 6 vs. MSU-Northern, 12/6/06

Steals: 3 vs. St. Martin's, 12/16/05

Blocks: 1 four times

#50 Michelle Lieber

Points: 32 vs. St. Edward's, 2/24/07

Rebounds: 19 vs. Oklahoma Panhandle, 3/1/06

3-Point FGs: 1 three times

Assists: 4 five times

Steals: 4 vs. Seattle, 11/30/04; 4 vs. Mary, 12/15/06

Blocks: 4 vs. Lincoln, 1/20/07

#52 Laura Beach

Points: 5 vs. Lincoln, 2/3/07

Rebounds: 6 vs. Texas-Permian Basin, 2/17/07

3-Point FGs: n/a

Assists: 1 vs. Oklahoma Panhandle, 12/30/06; 1 vs. Incarnate Word, 2/10/07

Steals: 2 vs. St. Mary's, 2/12/07

Blocks: 2 vs. Oklahoma Panhandle, 12/30/06

The Last Time in Lady Yellowjacket Basketball.....

A player scored at least 40 points.....	Feb. 25, 1992 (Sherry McQuinn, 40 vs. Alaska-Fairbanks)
A player scored at least 30 points.....	Feb. 24, 2007 (Michelle Lieber, 32 vs. St. Edward's)
A player made at least 15 field goals.....	Feb. 19, 2000 (Codi Schmitz vs. Seattle)
A player made seven 3-pointers.....	Dec. 30, 2006 (Alira Carpenter vs. Oklahoma Panhandle)
A player made six 3-pointers.....	Feb. 17, 2007 (Kayla McPherson vs. Texas-Permian Basin)
A player made five 3-pointers.....	Feb. 17, 2007 (Alira Carpenter vs. Texas-Permian Basin)
A player made at least 15 free throws.....	Nov. 30, 2002 (Natalie Visger vs. St. Martin's)
A player made at least 10 free throws.....	Feb. 24, 2007 (Michelle Lieber, 12/15 vs. St. Edward's)
A player had at least 20 rebounds.....	Dec. 20, 2003 (Robyn Milne, 22 vs. Alaska-Fairbanks)
A player had at least 15 rebounds.....	Nov. 17, 2006 (Michelle Lieber, 16 vs. Western Oregon)
A player had at least 10 assists....	Feb. 19, 2000 (Deena Bartu, 13 vs. Seattle)
A player had at least 5 assists.....	Feb. 22, 2007 (Jennifer Skrifvars, 5 vs. TX A&M-Int'l)
A player had at least 5 blocked shots.....	Feb. 18, 2006 (Tanya Petersen, 6 vs. St. Mary's)
A player had at least 5 steals.....	Feb. 22, 2007 (Shantell Marquis, 8 vs. TX A&M-Int'l)
A player had a double-double.....	Feb. 24, 2007 (Michelle Lieber, 32pts/12rbs vs. St. Edward's)
The team scored at least 100 points.....	Jan. 18, 2005 (100 vs. Western New Mexico)
The team scored at least 90 points.....	Feb. 17, 2007 (97 vs. Texas-Permian Basin)
The team allowed at least 100 points.....	Jan. 22, 1998 (102 by Seattle Pacific)
The team made at least 40 field goals.....	Feb. 19, 2000 (44 vs. Seattle)
The team shot over 60 % from the field.....	Dec. 2, 2005 (62.1% vs. Metro State)
The team shot over 50% from the field.....	Jan. 27, 2007 (57.8% vs. Incarnate Word)
The team made at least 15 3-pointers.....	Feb. 17, 2007 (15 vs. Texas-Permian Basin)
The team made at least 10 3-pointers.....	Feb. 8, 2007 (10 vs. St. Mary's)
The team made at least 30 free throws.....	Jan. 7, 2007 (31 vs. St. Edward's)
The team made at least 25 free throws.....	Jan. 27, 2007 (26 vs. Incarnate Word)
The team had at least 70 rebounds.....	Dec. 15, 1983 (74 vs. Great Falls)
The team had at least 60 rebounds.....	Nov. 17, 2006 (64 vs. Western Oregon)
The team had at least 40 assists.....	Nov. 22, 1983 (40 vs. Rocky Mountain)
The team had at least 30 assists.....	Dec. 16, 2005 (30 vs. St. Martin's)
The team had at least 25 assists.....	Feb. 17, 2007 (28 vs. Texas-Permian Basin)
The team had at least 20 assists.....	Jan. 4, 2007 (21 vs. TX A&M-Int'l)
The team had at least 10 blocked shots....	Jan. 3, 2005 (10 vs. Northwest Nazarene)
The team had at least 5 blocked shots....	Feb. 2, 2007 (5 vs. Lincoln)
The team had at least 20 steals.....	Feb. 14, 1998 (20 vs. Montana Tech)
The team had at least 15 steals.....	Jan. 4, 2007 (17 vs. TX A&M-Int'l)



#11 Skrifvars



#13 Carpenter



#14 Meadors



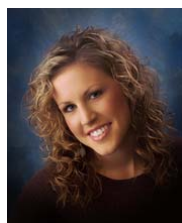
#21 Hansen



#22 Marquis



#25 Henderson



#30 Jacobs



#33 McPherson



#41 Smith



#50 Lieber



#52 Beach



06-07 Yellowjacket Basketball
Mont. St.-Billings Combined Team Statistics (as of Feb 26, 2007)
All games

RECORD:	OVERALL	HOME	AWAY	NEUTRAL
ALL GAMES.....	(20-9)	(13-1)	(5-8)	(2-0)
CONFERENCE.....	(7-3)	(5-0)	(2-3)	(0-0)
NON-CONFERENCE.....	(13-6)	(8-1)	(3-5)	(2-0)

## Player	GP-GS	Min--Avg	---TOTAL---		---3-PTS---		FT-FTA	Pct	---REBOUNDS---				PF	FO	A	TO	Blk	Stl	Pts	Avg
			FG-FGA	Pct	3FG-FGA	Pct			Off	Def	Tot	Avg								
11 Jennifer Skrifvars.	29-5	499 17.2	20-69	.290	4-19	.211	20-34	.588	18	44	62	2.1	40	0	49	30	3	18	64	2.2
13 Alira Carpenter....	29-28	891 30.7	182-415	.439	84-197	.426	52-60	.867	30	57	87	3.0	59	0	69	69	1	28	500	17.2
14 Jetton Meadors.....	29-27	765 26.4	71-188	.378	35-88	.398	43-55	.782	24	63	87	3.0	43	0	104	88	4	34	220	7.6
21 Rachel Hansen.....	27-0	266 9.9	11-43	.256	4-17	.235	4-7	.571	0	11	11	0.4	17	0	26	33	0	9	30	1.1
22 Shantell Marquis...	29-25	783 27.0	80-223	.359	15-56	.268	39-68	.574	28	108	136	4.7	53	1	82	95	20	68	214	7.4
25 Dani Henderson.....	29-25	697 24.0	70-161	.435	6-25	.240	50-65	.769	54	116	170	5.9	60	0	52	60	9	23	196	6.8
33 Kayla McPherson....	29-3	534 18.4	91-231	.394	61-154	.396	31-35	.886	15	45	60	2.1	22	1	26	31	1	12	274	9.4
41 Jen Smith.....	29-4	607 20.9	79-176	.449	12-37	.324	50-91	.549	40	69	109	3.8	52	1	40	46	3	14	220	7.6
50 Michelle Lieber....	24-23	709 29.5	124-177	.701	0-1	.000	141-182	.775	85	119	204	8.5	75	3	27	35	20	24	389	16.2
52 Laura Beach.....	19-0	100 5.3	7-22	.318	0-0	.000	8-16	.500	11	12	23	1.2	9	0	3	5	4	1	22	1.2
TEAM.....									48	62	110	3.8	0		4					
Total.....	29	5851	735-1705	.431	221-594	.372	438-613	.715	353	706	1059	36.5	430	6	478	496	65	231	2129	73.4
Opponents.....	29	5850	716-1761	.407	179-518	.346	320-462	.693	399	714	1113	38.4	528	-	435	553	78	227	1931	66.6

TEAM STATISTICS	MSUB	OPP	DATE	OPPONENT	W/L	SCORE	ATTEND
SCORING.....	2129	1931	11/17/06	WESTERN OREGON	W	77-62	317
Points per game.....	73.4	66.6	11/18/06	NORTH DAKOTA	L	62-71	334
Scoring margin.....	+6.8	-	11/28/06	ROCKY MOUNTAIN	W	85-69	227
FIELD GOALS-ATT.....	735-1705	716-1761	11/30/06	at NW Missouri State	L	82-95	521
Field goal pct.....	.431	.407	12/02/06	at Missouri Western	L	56-75	1521
3 POINT FG-ATT.....	221-594	179-518	12/6/06	MONT. ST.-NORTHERN	W	80-67	167
3-point FG pct.....	.372	.346	12/9/06	at Saint Martin's University	W	84-68	147
3-pt FG made per game..	7.6	6.2	12/15/06	UNIV. OF MARY	W	69-63	327
FREE THROWS-ATT.....	438-613	320-462	12/19/06	vs Abilene Christian	W	86-61	68
Free throw pct.....	.715	.693	12/20/06	vs Missouri Southern State	W	78-69	100
REBOUNDS.....	1059	1113	*12/30/06	OKLA. PANHANDLE ST.	W	84-60	820
Rebounds per game.....	36.5	38.4	01/04/06	TEXAS A&M-INTN'L	W	82-64	312
Rebounding margin.....	-1.9	-	*01/06/07	ST. EDWARD'S	W	76-57	370
ASSISTS.....	478	435	01/07/07	ST. EDWARD'S	W	78-61	316
Assists per game.....	16.5	15.0	*1-12-07	at Panhandle State Univ.	L	82-85	325
TURNOVERS.....	496	553	1-13-07	at Panhandle State Univ.	W	73-66	410
Turnovers per game.....	17.1	19.1	01/15-07	at Texas-Permian Basin	W	88-62	-
Turnover margin.....	+2.0	-	*01/20/07	LINCOLN UNIVERSITY	W	73-47	824
Assist/turnover ratio..	1.0	0.8	*01/24/07	ST. MARY'S (TEXAS)	W	69-67	917
STEALS.....	231	227	*01/27/07	INCARNATE WORD	W	89-81	644
Steals per game.....	8.0	7.8	01/28/07	INCARNATE WORD	W	66-65	480
BLOCKS.....	65	78	*02/02/07	at Lincoln University	L	62-66	105
Blocks per game.....	2.2	2.7	02/03/07	at Lincoln University	LOT	71-75	95
WINNING STREAK.....	1	-	*02/08/07	at St. Mary's (TX)	W	59-57	529
Home win streak.....	12	-	*02/10/07	at Incarnate Word	L	37-65	215
ATTENDANCE.....	6399	4842	02/12/07	at St. Mary's (TX)	L	48-51	350
Home games-Avg/Game....	14-457	13-360	2/17/07	TEXAS-PERMIAN BASIN	W	97-60	344
Neutral site-Avg/Game..	-	2-84	2/22/07	at Texas A&M International	L	66-75	129
			*02/24/07	at St. Edward's	W OT	70-67	327
SCORE BY PERIODS:	1st	2nd	OT	Total			
-----	-----	-----	-----	-----			
Mont. St.-Billings.....	1038	1076	15	- 2129			
Opponents.....	866	1049	16	- 1931			

06-07 Yellowjacket Basketball
Mont. St.-Billings Game-by-Game Highs (as of Feb 26, 2007)
All games

Opponent	Date	Score	WL	POINTS	REBOUNDS	ASSISTS	STEALS	BLOCKED SHOTS
WESTERN OREGON	11/17/06	77-62	W	20-Michelle Lieb	16-Michelle Lieb	5-Alira Carpent	2-Kayla McPhers	1-Dani Henderso Shantell Marq
NORTH DAKOTA	11/18/06	62-71	L	15-Alira Carpent	7-Alira Carpent	5-Jetton Meador	2-Michelle Lieb	None
ROCKY MOUNTAIN	11/28/06	85-69	W	22-Michelle Lieb	7-Michelle Lieb	6-Jetton Meador	3-Alira Carpent Jetton Meador Shantell Marq	2-Michelle Lieb
at NW Missouri State	11/30/06	82-95	L	20-Alira Carpent	13-Michelle Lieb	2-Alira Carpent	4-Jetton Meador	1-Shantell Marq
at Missouri Western	12/02/06	56-75	L	22-Michelle Lieb	7-Michelle Lieb	3-Jetton Meador Alira Carpent Michelle Lieb	1-Kayla McPhers	1-Shantell Marq
MONT. ST.-NORTHERN	12/6/06	80-67	W	28-Alira Carpent	9-Shantell Marq	6-Jen Smith	3-Dani Henderso Alira Carpent	1-Alira Carpent
at Saint Martin's Univers	12/9/06	84-68	W	15-Jen Smith	11-Dani Henderso Michelle Lieb	5-Jetton Meador Shantell Marq	2-Shantell Marq Dani Henderso	2-Shantell Marq
UNIV. OF MARY	12/15/06	69-63	W	24-Alira Carpent	6-Shantell Marq	5-Jetton Meador	4-Michelle Lieb	2-Michelle Lieb
vs Abilene Christian	12/19/06	86-61	W	18-Alira Carpent	8-Michelle Lieb	4-Alira Carpent Rachel Hansen Jetton Meador	3-Michelle Lieb Shantell Marq	1-Kayla McPhers
vs Missouri Southern Stat	12/20/06	78-69	W	21-Michelle Lieb Kayla McPhers	12-Michelle Lieb	6-Jetton Meador	2-Shantell Marq Dani Henderso	3-Michelle Lieb
OKLA. PANHANDLE ST.	12/30/06	84-60	W	26-Alira Carpent	7-Dani Henderso	7-Shantell Marq	3-Shantell Marq Alira Carpent	2-Laura Beach
TEXAS A&M-INTN'L	01/04/06	82-64	W	18-Jen Smith Michelle Lieb	10-Michelle Lieb	9-Shantell Marq	5-Shantell Marq	1-Michelle Lieb
ST. EDWARD'S	01/06/07	76-57	W	28-Alira Carpent	13-Michelle Lieb	5-Alira Carpent Shantell Marq	3-Shantell Marq	1-Michelle Lieb
ST. EDWARD'S	01/07/07	78-61	W	19-Alira Carpent	6-Michelle Lieb	7-Jetton Meador	2-Shantell Marq	1-Dani Henderso
at Panhandle State Univ.	1-12-07	82-85	L	26-Jetton Meador	13-Michelle Lieb	6-Dani Henderso	2-Shantell Marq	2-Shantell Marq
at Panhandle State Univ.	1-13-07	73-66	W	12-Alira Carpent	11-Shantell Marq	7-Jetton Meador	2-Jetton Meador Shantell Marq	2-Dani Henderso
at Texas-Permian Basin	01/15-07	88-62	W	20-Michelle Lieb Kayla McPhers	9-Jennifer Skri	8-Jetton Meador	4-Jetton Meador	1-Michelle Lieb Dani Henderso
LINCOLN UNIVERSITY	01/20/07	73-47	W	19-Alira Carpent	9-Michelle Lieb	4-Jennifer Skri Shantell Marq Kayla McPhers	4-Shantell Marq	4-Michelle Lieb
ST. MARY'S (TEXAS)	01/24/07	69-67	W	23-Michelle Lieb	7-Dani Henderso	4-Jetton Meador Jen Smith	4-Jetton Meador	1-Jetton Meador Michelle Lieb Dani Henderso
INCARNATE WORD	01/27/07	89-81	W	30-Alira Carpent	10-Michelle Lieb	4-Shantell Marq Jetton Meador	2-Shantell Marq	1-Shantell Marq
INCARNATE WORD	01/28/07	66-65	W	16-Alira Carpent	9-Dani Henderso	6-Jetton Meador	1-Shantell Marq	2-Shantell Marq
at Lincoln University	02/02/07	62-66	L	15-Michelle Lieb	11-Dani Henderso	4-Dani Henderso	2-Shantell Marq Jetton Meador	2-Jetton Meador
at Lincoln University	02/03/07	71-75	OL	20-Alira Carpent	14-Michelle Lieb	4-Dani Henderso	2-Jen Smith Michelle Lieb	1-Shantell Marq Michelle Lieb
at St. Mary's (TX)	02/08/07	59-57	W	23-Alira Carpent	7-Dani Henderso	4-Jennifer Skri Alira Carpent	3-Dani Henderso	1-Jen Smith Jennifer Skri
at Incarnate Word	02/10/07	37-65	L	13-Jen Smith	7-Jen Smith	6-Alira Carpent	3-Alira Carpent	1-Dani Henderso
at St. Mary's (TX)	02/12/07	48-51	L	16-Shantell Marq	10-Shantell Marq	3-Jen Smith	3-Shantell Marq	1-Jennifer Skri Shantell Marq
TEXAS-PERMIAN BASIN	2/17/07	97-60	W	29-Alira Carpent	12-Dani Henderso	7-Shantell Marq	4-Jennifer Skri	1-Laura Beach

06-07 Yellowjacket Basketball

Mont. St.-Billings Game-by-Game Highs (as of Feb 26, 2007)

All games

Opponent	Date	Score	WL	POINTS	REBOUNDS	ASSISTS	STEALS	BLOCKED SHOTS
								Shantell Marq
at Texas A&M Internationa	2/22/07	66-75	L	17-Alira Carpent	7-Dani Henderso	5-Jennifer Skri	8-Shantell Marq	4-Shantell Marq
at St. Edward's	02/24/07	70-67	WO	32-Michelle Lieb	12-Michelle Lieb	4-Shantell Marq	5-Shantell Marq	2-Michelle Lieb

06-07 Yellowjacket Basketball

Mont. St.-Billings Game-by-Game Points-Rebounds-Assists (as of Feb 26, 2007)

All games

Opponent	Date	Score	WL	11	13	14	21	22	25	33	41	50
				SKRIFVARS	CARPENTER	MEADORS,J	HANSEN,RA	MARQUIS,S	HENDERSON	MCPHERSON	SMITH,JEN	LIEBER,MI
WESTERN OREGON	11/17/06	77-62	W	0-3-2	12-5-5	8-7-3	0-1-1	10-8-1	15-11-0	7-0-1	5-4-1	20-16-4
NORTH DAKOTA	11/18/06	62-71	L	0-0-0	15-7-1	8-2-5	0-0-0	4-6-1	6-6-0	9-2-0	8-3-1	12-5-1
ROCKY MOUNTAIN	11/28/06	85-69	W	0-2-1	19-3-2	3-4-6	9-1-3	5-3-2	0-3-2	15-2-2	11-2-2	22-7-3
at NW Missouri State	11/30/06	82-95	L	1-2-1	20-2-2	14-2-1	2-1-1	8-2-1	2-6-1	13-4-1	10-8-1	12-13-1
at Missouri Western	12/02/06	56-75	L	0-6-1	7-1-3	10-4-3	5-0-0	0-6-2	4-3-1	2-1-0	5-1-1	22-7-3
MONT. ST.-NORTHERN	12/6/06	80-67	W	0-1-1	28-2-2	16-2-1	0-1-5	4-9-5	10-3-0	6-2-0	2-4-6	12-4-3
at Saint Martin's Univ	12/9/06	84-68	W	3-2-1	14-1-4	14-5-5	0-0-1	12-5-5	7-11-1	5-0-0	15-6-1	14-11-1
UNIV. OF MARY	12/15/06	69-63	W	2-3-1	24-2-2	11-3-5	0-0-1	13-6-1	7-5-3	0-1-1	7-3-0	5-4-0
vs Abilene Christian	12/19/06	86-61	W	4-0-0	18-4-4	7-2-4	0-1-4	6-2-2	9-2-0	13-2-1	15-4-1	12-8-1
vs Missouri Southern St	12/20/06	78-69	W	0-1-1	16-3-3	7-3-6	0-0-0	2-3-1	5-3-0	21-3-1	4-4-0	21-12-1
OKLA. PANHANDLE ST.	12/30/06	84-60	W	4-2-1	26-2-2	0-1-0	0-1-2	13-3-7	5-7-3	12-4-2	3-1-3	19-4-1
TEXAS A&M-INTN'L	01/04/06	82-64	W	0-1-2	9-4-3	10-1-1	5-2-0	2-1-9	7-8-2	13-2-2	18-7-2	18-10-0
ST. EDWARD'S	01/06/07	76-57	W	2-1-1	28-3-5	1-0-3	0-0-0	8-4-5	6-4-2	12-2-0	4-2-0	13-13-1
ST. EDWARD'S	01/07/07	78-61	W	13-1-1	19-1-2	5-3-7	0-0-1	0-4-1	2-2-2	14-2-0	11-4-1	14-6-0
at Panhandle State Univ	1-12-07	82-85	L	0-1-2	7-1-3	26-1-3	0-0-0	13-6-5	8-8-6	6-3-2	3-1-0	19-13-0
at Panhandle State Univ	1-13-07	73-66	W	1-0-3	12-3-1	6-1-7	4-0-0	11-11-2	11-5-0	11-1-0	9-5-0	8-6-0
at Texas-Permian Basin	01/15-07	88-62	W	2-9-3	18-3-4	8-5-8	4-0-3	7-4-2	2-5-2	20-2-1	7-6-2	20-6-4
LINCOLN UNIVERSITY	01/20/07	73-47	W	3-0-4	19-2-2	9-2-3	0-2-0	8-2-4	2-2-0	9-3-4	7-0-1	14-9-0
ST. MARY'S (TEXAS)	01/24/07	69-67	W	2-0-1	13-4-0	7-5-4	DNP	7-3-3	5-7-2	0-0-0	12-4-4	23-5-0
INCARNATE WORD	01/27/07	89-81	W	2-4-3	30-3-1	3-2-4	0-0-1	13-2-4	8-5-2	8-2-1	3-1-1	22-10-1
INCARNATE WORD	01/28/07	66-65	W	0-1-0	16-2-2	4-4-6	0-0-0	11-3-1	14-9-2	6-2-0	15-7-1	DNP
at Lincoln University	02/02/07	62-66	L	0-2-1	13-2-1	13-7-1	0-0-1	11-3-1	6-11-4	4-2-1	0-1-0	15-8-0
at Lincoln University	02/03/07	71-75	OL	6-1-2	20-7-1	5-1-2	0-0-1	4-6-2	4-4-4	3-0-0	7-1-1	17-14-2
at St. Mary's (TX)	02/08/07	59-57	W	2-4-4	23-6-4	6-1-3	0-0-0	1-3-2	7-7-1	16-4-0	4-6-2	DNP
at Incarnate Word	02/10/07	37-65	L	2-2-0	5-3-6	4-4-1	0-0-0	4-5-0	6-4-1	3-4-0	13-7-0	DNP
at St. Mary's (TX)	02/12/07	48-51	L	4-1-1	14-3-1	0-3-1	1-1-0	16-10-0	4-2-1	0-1-1	6-6-3	3-1-0
TEXAS-PERMIAN BASIN	2/17/07	97-60	W	7-4-5	29-4-2	9-8-6	0-0-1	4-3-7	17-12-3	25-2-2	5-4-2	DNP
at Texas A&M Internatio	2/22/07	66-75	L	2-5-5	17-0-0	0-3-2	0-0-0	11-6-2	10-7-4	13-2-2	11-6-3	DNP
at St. Edward's	02/24/07	70-67	WO	2-3-1	9-4-1	6-1-3	DNP	6-7-4	7-8-3	8-5-1	0-1-0	32-12-0

52

Opponent	Date	Score	WL	52
				BEACH,LAU
WESTERN OREGON	11/17/06	77-62	W	0-2-0
NORTH DAKOTA	11/18/06	62-71	L	DNP
ROCKY MOUNTAIN	11/28/06	85-69	W	1-1-0
at NW Missouri State	11/30/06	82-95	L	DNP
at Missouri Western	12/02/06	56-75	L	1-0-0
MONT. ST.-NORTHERN	12/6/06	80-67	W	2-1-0
at Saint Martin's Univ	12/9/06	84-68	W	0-0-0
UNIV. OF MARY	12/15/06	69-63	W	0-0-0
vs Abilene Christian	12/19/06	86-61	W	2-2-0
vs Missouri Southern St	12/20/06	78-69	W	2-0-0
OKLA. PANHANDLE ST.	12/30/06	84-60	W	2-3-1
TEXAS A&M-INTN'L	01/04/06	82-64	W	0-1-0
ST. EDWARD'S	01/06/07	76-57	W	2-0-0
ST. EDWARD'S	01/07/07	78-61	W	0-0-0
at Panhandle State Univ	1-12-07	82-85	L	DNP
at Panhandle State Univ	1-13-07	73-66	W	DNP
at Texas-Permian Basin	01/15-07	88-62	W	DNP
LINCOLN UNIVERSITY	01/20/07	73-47	W	2-1-1
ST. MARY'S (TEXAS)	01/24/07	69-67	W	DNP
INCARNATE WORD	01/27/07	89-81	W	0-0-0
INCARNATE WORD	01/28/07	66-65	W	0-1-0
at Lincoln University	02/02/07	62-66	L	DNP
at Lincoln University	02/03/07	71-75	OL	5-1-0
at St. Mary's (TX)	02/08/07	59-57	W	DNP
at Incarnate Word	02/10/07	37-65	L	0-2-1
at St. Mary's (TX)	02/12/07	48-51	L	DNP
TEXAS-PERMIAN BASIN	2/17/07	97-60	W	1-6-0
at Texas A&M Internatio	2/22/07	66-75	L	2-2-0
at St. Edward's	02/24/07	70-67	WO	DNP