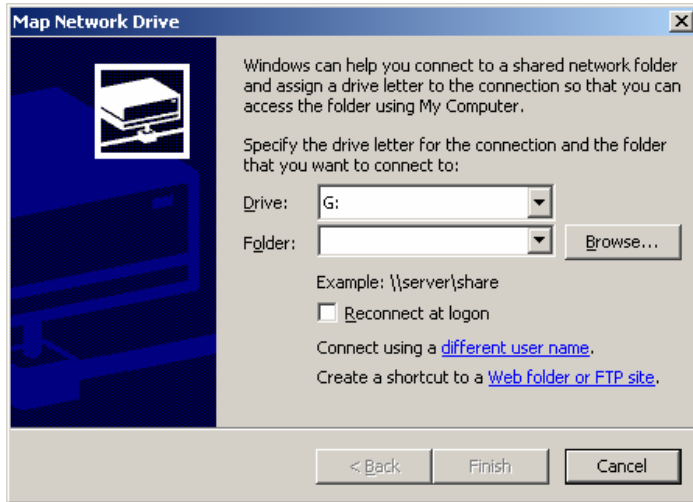


How To Map A Network Drive Using Windows2000

Right Click on My Computer
Choose Explore
Right Click on My Network Places
Choose Map Network Drive

You will get a box similar to this:

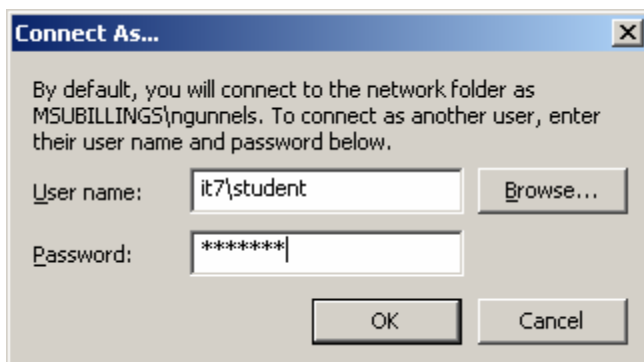


The Drive letter is unimportant (if you are having an entire class map, you may want to use the same drive letter for consistency). (Use the letter S for Studentshare)

In the folder section, you type whatever you are mapping to. (For example) <\\207.196.229.4\studentshare>

Click on Finish. You should be connected.

NOTE: Depending on how you log into your pc, you may have to also click on: Connect using a different user name. You will get the following window:



It will tell you what you are connected as. For User name: you need to type in msubillings*username*
Click on OK

You should now be connected to your shared drive.