

## How To Map a Network Drive To a Class Share Using Windows XP

For **students** on the student domain

### Log onto the pc as yourself

To log on as **INDIVIDUAL** on the student domain

With pc on and at the message that asks you to press Control Alt Delete:  
Press Control + Alt + Delete

You get a window that asks for:

For username, type in:

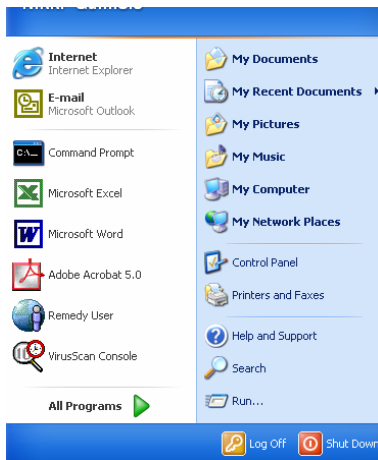
username

For password, type in:

whatever your password is (birthdate)

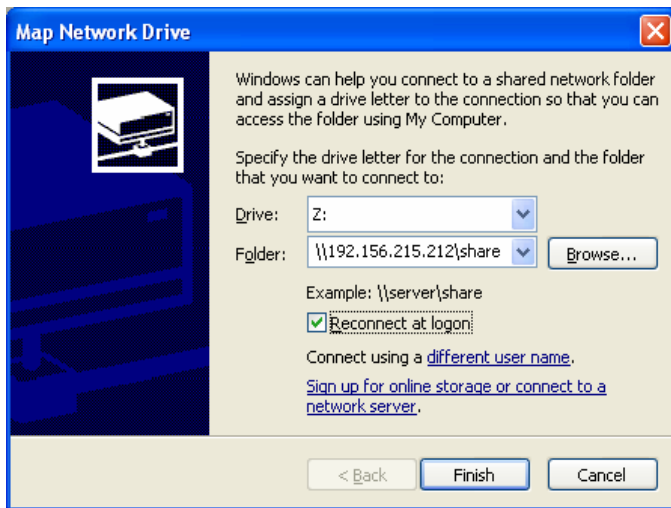
For log on to, click on the down arrow and choose: student

Click on Start



Right Click on My Computer  
Choose Explore

Right Click on My Network Places  
Choose Map Network Drive



Choose the appropriate drive letter. (For consistency, Z is for *your individual share*, S is for *your student share*, etc.)

In the Folder, type the address of where you are mapping to. For example:

[\\192.156.215.211\username](http://192.156.215.211/username)

OR

[\\192.156.215.211\ClassShareName](http://192.156.215.211/ClassShareName)

Please be aware that you need to know the IP and the Class share name. It must be exact!

You **won't** click on connect using different user name.

**NOTE:** In this case of logging on as yourself, you **DO** want the Reconnect at logon to be checked. This will be mapped every time you log onto that particular pc as yourself!

Click on Finish. Your mapped drive should now appear.

If you log on as yourself, you **WILL NOT** need to map your drive the next time you log onto *that particular pc*!  
If you sit at a different pc that you have not logged in as yourself and mapped the drive, you will have to go through this same procedure.