

Interpersonal Attraction

Propinquity

- Mere exposure effect

总

黎

辛

那

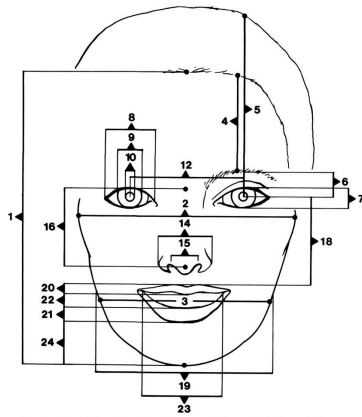
系

空



Civadra
Lokanta
Zabulon
Dilikli
Biwouni
Afworbu
Kadriga

What makes a person attractive?

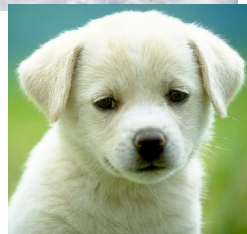


Correlations of Feature Measurement Ratios With Mean Attractiveness Ratings

Feature	Complete sample (n = 50)
Neonate features	
Forehead height, eyebrow to hairline	-.09
Upperhead height, pupil to top of head	.16
Eye height	.50*
Eye width	.41*
Iris width	.17
Separation of eyes	.29*
Nose tip width	-.05
Nostril width	.33*
Nose length	-.02
Nose area	-.34*
Upper lip thickness	-.06
Lower lip thickness	.11
Chin length	-.38*
Mature features	
Cheekbone width	.58*
Cheek width	-.47*
Mid-face length	.06
Expressive features	
Eyebrow height	.46*
Pupil width	.42*
Standardized pupil width	.30*
Smile height	.23
Smile width	.53*

Attractive features (women)

- Neonatal features
- Large eyes
- Small nose
- Small chin



Attractive features (women, cont'd)

- Mature features
- Wide cheekbones
- Narrow cheeks
- Expressive features
- Large eyes
- High eyebrows
- Big smile

Attractive features (men)

- Large eyes
- Large cheekbones
- Big smile
- Large chin

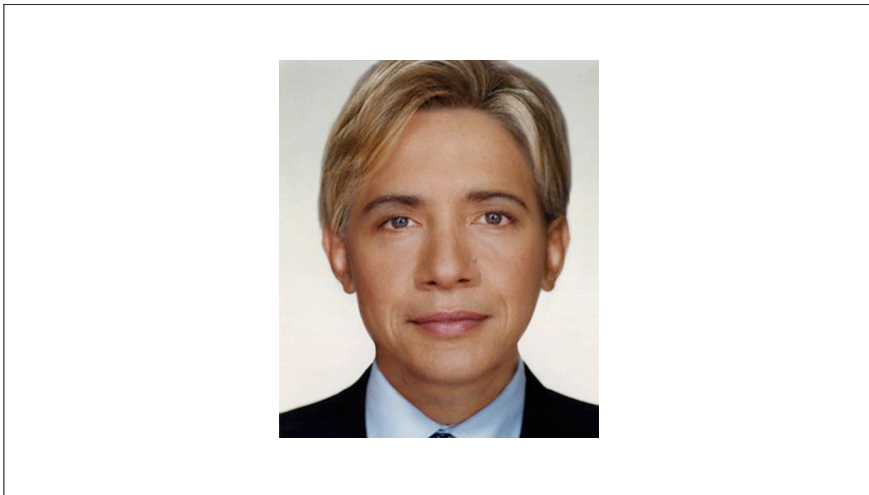




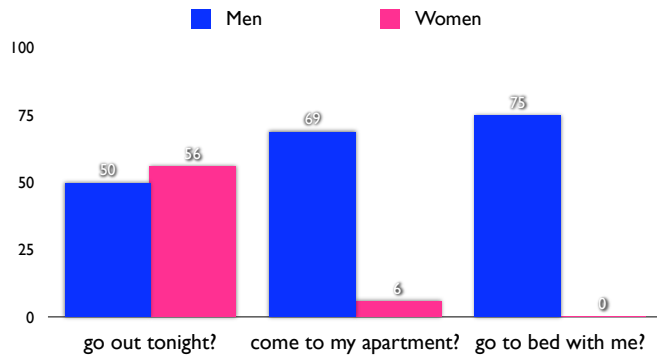


Average faces

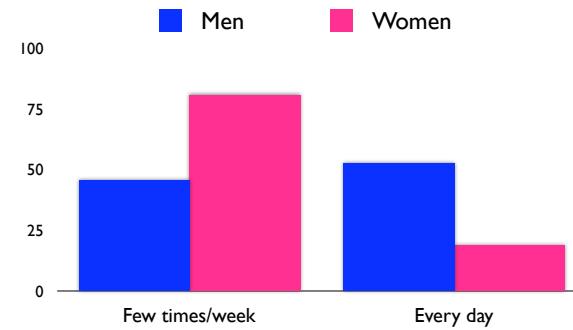
- Mere exposure?
- Mixed race = beautiful?



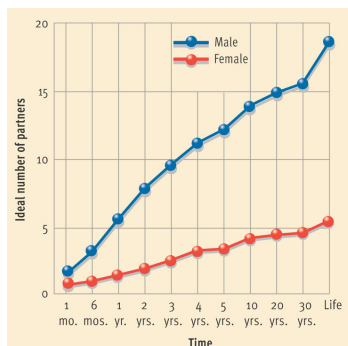
I've been noticing you around campus and I find you very attractive. Will you...



Thinking about sex



Desired number of sexual partners



The Evolutionary Psychology Approach

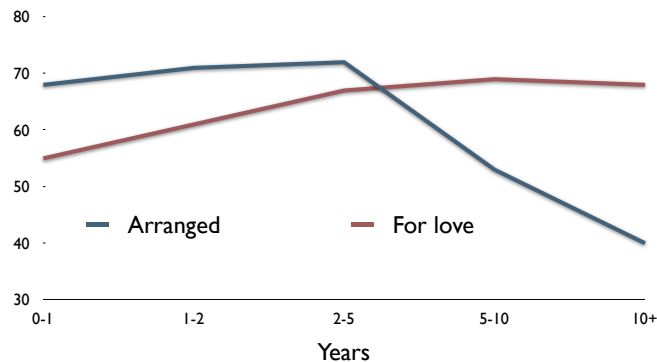
- Reproductive fitness
- Parental investment
 - Men look for quantity
 - Women look for quality
- Men look for youth, attractiveness in women
- Women look for career, economic success in men

Passionate Love vs. Companionate Love

Passionate Love

- I would feel despair if _____ left me.
- Sometimes I feel I can't control my thoughts, they are obsessively on _____.
- I yearn to know all about _____.
- _____ always seems to be on my mind.
- I eagerly look for signs indicating _____'s desire for me.
- I get extremely depressed when things don't go right in my relationship with _____.

Amount of love in marriages



A true-false quiz about marriage.
Based on *Marriage, a History*
How Love Conquered Marriage, by
Stephanie Coontz

T of F: There are more long-term marriages today than in the past.

TRUE. Although divorce rates have risen, death rates have fallen even more steeply, so that more couples will celebrate their 40th wedding anniversaries now than at any time in the past. Furthermore, the divorce rate reached its height more than 25 years ago. It has fallen by more than 25% since 1981.

Americans have become much more tolerant of all sexual activity.

FALSE. Americans are now much more tolerant of consenting sexual relations between unmarried adults than in the past. But surveys show that disapproval of adultery, sexual coercion, rape, and sex with minors has increased over the past 30 years and is now at a historic high. In 1889, a girl could legally consent to sex at 10, 11, or 12 in half the states, and in Delaware the age of consent was 7. There were many more prostitutes per capita in the late 19th century America than there are today - resulting in a high incidence of venereal disease among respectably married women infected by their husbands.

The growth in the number of couples living together and even having children without formal marriage ceremonies or licenses reflects a sharp break with centuries-old tradition.

FALSE. For the first thousand years of its existence, the church held that a marriage was valid if a couple claimed they had exchanged words of consent - even if there were no witnesses and no priest to officiate. Not until 1754 did England require issuance of a license for a marriage to be valid. Informal marriage and cohabitation were so common in early 19th-century America that one judge estimated that 1/3 of all children were born to couples who were not legally married.

Throughout history, philosophers and theologians have always believed that strong marital commitments form the foundation of a virtuous society.

FALSE. Ancient Roman philosophers and medieval theologians thought that loving your spouse too much was a form of "adultery," a betrayal of one's obligations to country or God. The ancient Greeks held that the purest form of love was between two men. In China, Confucian philosophers ranked the relationship between husband and wife as 2nd from the bottom on their list of the most important family ties, with the father-eldest son relationship topping the list. Early Christians thought marriage was inescapably tainted by the presence of sex. According to the medieval Church, virgins ranked highest in godliness, widows were 2nd, and wives a distant 3rd.

The preferred form of marriage through the ages has been between one man and one woman.

FALSE. The form of marriage that has been approved by more societies than any other through the ages has been polygamy - one man and many women. That family form is the one mentioned most often in the first 5 books of the Bible. In some societies, one woman could marry several men. In others, 2 families could forge an alliance by marrying off a son or daughter to the "ghost" of the other family's dead child. For most of history, the main impetus for marriage was getting in-laws and managing property, not love or sex.

Attachment Types

- **Secure:** I find it relatively easy to get close to others and am comfortable depending on them and having them depend on me. I don't often worry about being abandoned or about someone getting too close to me.
- **Avoidant:** I am somewhat uncomfortable being close to others; I find it difficult to trust them completely, difficult to allow myself to depend on them. I am nervous when anyone gets too close, and often, love partners want me to be more intimate than I feel comfortable being.
- **Anxious/Ambivalent:** I find that others are reluctant to get as close as I would like. I often worry that my partner doesn't really love me or won't want to stay with me. I want to merge completely with another person, and this desire sometimes scares people away.