



Lady Yellowjacket Basketball 2006-2007

Weekly Release #9 – January 15, 2007

This Week's Events:

Jan. 20 - vs. Lincoln University, 5:30 p.m. MST, AM 970

This Week's Opponents:

Lincoln University Lady Blue Tigers

The Lady Blue Tigers have struggled this season, but picked up a recent win at Texas-Permian Basin, snapping a ten-game losing streak. With the win, Lincoln improved to 2-13 overall and 0-1 in the Heartland Conference. They're only other win came at the hands of William Woods University, 76-64. They've only played one Heartland Conference game so far this season, falling to St. Edward's 44-56.

Lincoln has been paced by senior Brezette Elder Wade, who's averaged and impressive 16.8 points per game this season. She trails only MSUB's Alira Carpenter's 17.1 ppg for tops in the conference. Elder-Wade also averages 4.73 boards per game and is second on the team with 24 steals on the year. Senior Tiffannie Wolfe leads the team in rebounds, averaging 7.4 per game and carries a 7.6 points per game average this year, as well.

Lincoln is currently tied for last in scoring in the Heartland, scoring just 53.7 ppg. They have, however, experienced some success on defense. The Lady Blue Tigers lead the conference in blocked shots (55) and steals (153). Junior Claire Jenkins and freshman Stacey Smith have combined for 31 of the team's blocked shots, which ranks them second and third in the Heartland.

Opponent Series Records:

MSU-Billings Wins: 3 Lincoln Wins: 0

Last Meeting: MSUB 72, LU 42 (2/4/06 at MSUB)

Streaks: The Yellowjackets have won all three games against Lincoln

2006-2007 Schedule and Results

Date	Opponent	Time/Result
11/17	Western Oregon	W, 77-62
11/18	North Dakota	L, 71-62
11/28	Rocky Mountain	W, 85-69
11/30	at Northwest Missouri St.	L, 95-82
12/2	at Missouri Western St.	L, 75-56
12/6	Mont. St.-Northern	W, 80-67
12/9	at St. Martin's	W, 84-68
12/15	University of Mary	W, 69-63
12/19	vs. Abilene Christian^	W, 86-61
12/20	vs. Missouri Southern^	W, 78-69
12/30	Oklahoma Panhandle *	W, 80-64
1/4	Texas A&M – Inter.	W, 82-64
1/6	St. Edward's *	W, 76-57
1/7	St. Edward's	W, 78-61
1/12	at Oklahoma Panhandle *	L, 85-82
1/13	at Oklahoma Panhandle	W, 73-66
1/15	at Texas – Permian Basin	W, 88-62
1/20	Lincoln University *	5:30 p.m.
1/24	St. Mary's University *	5:30 p.m.
1/27	Univ. of Incarnate Word *	5:30 p.m.
1/28	Univ. of Incarnate Word	5:30 p.m.
2/2	at Lincoln University *	5:30 p.m.
2/3	at Lincoln University	5:30 p.m.
2/8	at St. Mary's *	5:30 p.m.
2/10	at Uni. of Incarnate Word *	6:00 p.m.
2/12	at St. Mary's	6:00 p.m.
2/17	Texas – Permian Basin	5:30 p.m.
2/22	at Texas A&M – Inter.	5:30 p.m.
2/24	at St. Edward's *	6:00 p.m.
<i>Heartland Conference Tournament</i>		
3/2	Semifinals (Denton, TX)	12 & 2:30 p.m.
3/3	Finals (Denton, TX)	3:00 p.m.

Home Games in Bold played at Alterowitz Gym

Exhibition Game

* Heartland Conference Game

^ Hoop 'N Surf Classic, Honolulu, HI

All times local to game site

Lady Yellowjackets on the Airwaves

Catch all Lady Yellowjacket home games and selected road games on **News Radio AM 970 KBUL** as the Voice of the Yellowjackets, Pat Boland, calls the action live. Also tune in each week to the **Yellowjacket Coaches' Show**, broadcast live each Tuesday night at 7:00 p.m. If you live outside Billings, you can listen at www.msubillings.edu/athletics.

The Week in Review

The Lady Jackets traveled to Texas and Oklahoma for three-games. The first two games came against Oklahoma Panhandle State. Night one's Heartland Conference match came down to the wire after the Lady Jackets dominated much of the game. With less than two minutes to play, the Aggies pulled ahead by four but the Lady Jackets were able to tie the game at 82 apiece. The Aggies' Megan Hamilton clinched the game for OPSU on a three-point conversion with two seconds remaining on the clock. The loss snapped the Lady Jackets nine-game streak and handed them their first conference loss of the season. Jetton Meadors scored a career-high 26 points on 10-of-17 shooting from the field. She also knocked down a career-high six 3-pointers in the game.

The Lady Jackets bounced back on Saturday night against OPSU battling to the 73-66 win. Just like the previous night, the Lady Jackets opened up a double digit lead but the persistence of the Aggies brought the game to a tie with three minutes left in regulation. The Jackets tightened its defense and made key shots down the stretch in securing the seven point win. Shantell Marquis recorded her first double-double with 11 points and a career-high 11 rebounds in the game.

Battling the cold and icy conditions during hours of driving through Oklahoma and Texas, the Lady Jackets were focused on wrapping up the road trip with a win against University of Texas-Permian Basin Monday in Odessa. The Falcons never challenged the Lady Jackets as MSUB had a double digit lead less than two and a half minutes into the game and had built a 20-point lead by four minutes into the contest. The Lady Jackets went on to win 88-62. This was the highest scoring game for the Lady Jackets this season and was their ninth game in which the team scored over 80 points. Michelle Lieber and Kayla McPherson netted 20-points each and senior co-captain Jennifer Skrifvars grabbed a career-high nine boards in the game.

Tip Ins

The Lady Jackets are the hottest team in the Heartland Conference with three of five teams posting as many if not more losses than the Jackets have wins at 13-4...the Lady Jackets are the only team in the conference recording a positive scoring margin with 8.8 points per game average over their opponent...the Jackets are averaging 8.38 three-pointers per game accounting for 25 of their 77 point per game average...the team is shooting nearly as effectively from long range as they are from the field (.393 and .436)...Michelle Lieber is one of only 17 Lady Jackets in school history to eclipse the 1,000 point mark. She did this against OPSU. Lieber has 1,128 points in just her third season in a Yellowjacket uniform. If she were to score 137 more points this season, she will break the top 10 and surpass former teammate Tanya Petersen...Lieber has already broke the top 10 for career rebounds with 642. She needs seven more for 8th...In an attempt to out-do her own record, Lieber holds first, second, and third place for single season field goal percentage...Teammate Alira Carpenter is just mid-way through her second season and is just two 3-pointers from breaking the top 10 for 3-pointers...in just 16 games, she has surpassed last years 45 three-pointers to currently sit 11th in school history with 48...Jenni Winter (1998-99) holds the single season 3-point record with 75...Quiet Kayla McPherson has shot her way to 14th for career 3-pointers in just two seasons also...She currently has 56 and needs 65 for 13th...Jetton Meadors knocked down six 3-pointers in last week's game against OPSU for a career-high 26 points...she is 1-of-4 current Lady Jackets to hit six 3-pointers in a game...Senior Jennifer Skrifvars has posted career-highs in points and rebounds this season with the latest coming against Texas-Permian Basin in which she grabbed nine rebounds, leading all Lady Jackets.

MSUB Heartland Conference Individual Statistical Rankings (as of 1/7/07):

Scoring Average – Carpenter, 1st (18.2); Lieber, 3rd (15.4); McPherson, 11th (10.1). **Rebounds p/g** – Lieber, 2nd (8.6); Henderson, 9th (5.3); Marquis, 12th (4.4). **FG%** – Lieber, 1st (.644); Carpenter, 4th (.450); McPherson, 7th (.409). **Assists p/g** – Meadors, 1st (3.57); Marquis, 4th (3.07); Carpenter, 6th (2.86). **FT%** – Henderson, 1st (.824); Lieber, 4th (.796); Jen Smith, 6th (.714). **Steals** – Marquis, 4th (2.07); Carpenter, 13th (1.21). **3FG%** – Carpenter, 1st (.511); McPherson, 3rd (.392); Meadors, 4th (.378). **3FG p/g** – Carpenter, 1st (3.36); McPherson, 3rd (2.21); Meadors, 7th (1.21). **Blocked Shots p/g** – Lieber, 4th (0.71); Marquis, 13th (0.36). **Assist/Turnover Ratio** – Meadors, 1st (1.19); Marquis, 3rd (0.98). **Off. Rebs p/g** – Lieber, 1st (3.71); Henderson, 7th (2.07). **Def. Rebs p/g** – Lieber, 3rd (4.86); Marquis, 8th (3.57); Henderson, 10th (3.21).

MSUB Heartland Conference Team Statistical Rankings (as of 1/14/07):

Scoring Offense – 1st, 77.1. **Scoring Defense** – 5th, 68.3. **Scoring Margin** – 1st, +8.8. **FT %** – 1st, .751. **FG%** – 1st, .436. **FG% Defense** – 4th, .410. **3FG p/g** – 1st, 8.38. **3FG%** – 1st, .393. **3FG% Defense** – 4th, .341. **Rebounds p/g** – 3rd, 36.2. **Off. Rebs p/g** – 4th, 12.25. **Def. Rebs p/g** – 3rd, 24.00. **Rebound Margin** – 4th, -2.5. **Blocks p/g** – 4th, 1.94. **Assists p/g** – 1st, 16.81. **Steals p/g** – 5th, 7.81. **Turnover Margin** – 1st, +3.31. **Assist/Turnover Ratio** – 1st, 0.99.

Heartland Conf. Standings (through 1/14/07)

Team	All	Conf
1. St. Mary's	5-9	1-0
2. Montana State-Billings	12-4	2-1
3. St. Edward's	2-12	1-1
4. Oklahoma Panhandle	3-13	1-2
5. Lincoln	2-13	0-1
6. Incarnate Word	6-8	0-0

Heartland Conference Preseason Coaches' Poll

1. Montana State-Billings (76)
2. St. Mary's (61)
3. St. Edward's (60)
4. Incarnate Word (42)
5. Oklahoma Panhandle State (40)
6. Lincoln (15)

This Week's Games in the Heartland

Jan. 15	*LU @ OPSU *UIW @ STMU MSUB @ UTPB
Jan. 18	*UIW @ SEU STMU @ TAMIU OPSU @ UTPB
Jan. 20	*LU @ MSUB *STMU @ SEU UIW @ TAMIU

Current Lady Jackets in the School Record Books

Michelle Lieber

Career:	1st for FG% (65.7) 4th for rebounds per game (9.04) 9th for points per game (12.84) 8th for blocks (49) [needs 51 for 7th] 11th for FT% (74.0) 17th for points (1,128) [needs 1,129 for 16th; 1,135 for 15th] 10th for rebounds (642) [needs 649 for 8th]
Season:	1st for FG% (67.1 in 05-06) 2nd for FG% (66.1 in 06-07) 3rd for FG % (63.4 in 04-05) 7th for rebounds and rpg (275, 10.2 in 05-06) 16th for blocks (25 in 05-06)
Game:	t-2nd for FG% (91.7%, 11/12) 5th for FG% (87.5%, 14/16) t-19th for points (31) 5th for FG's (14/16) t-10th for FT's (11/18) t-5th for FT% (9/10) t-10th for rebounds (19)

Alira Carpenter

Career:	11th for 3-Ptrs. (93) [needs 95 for 10th] 2nd for 3-Pt.% (42.3) 7th for points per game (13.72)
Season:	11th for 3-Ptrs. (48 in 06-07) 12th for 3-Ptrs. (45 in 05-06) 2nd for 3 Pt.% (49.5 in 06-07)
Game:	t-1st for 3-Ptrs. (7) t-2nd for 3-Ptrs. (6) t-13 for 3Ptrs. (5) t-8th for 3 Pt.% (4/5)

Kayla McPherson

Career:	6th for 3 Pt.% (38.0) 14th for 3-Ptrs. (56) [needs 65 for 13th]
Season:	11th for 3 Pt.% (40.0 in 05-06) 13th for 3 Pt.% (39.6 in 06-07)
Game:	t-4th for 3-Ptrs (6) and 3 Pt.% (6/7)

Jetton Meadors

Season:	9th for 3 Pt.% (41.0 in 06-07)
Game:	t-8th for 3 Pt.% (4/5) t-4th for 3-Ptr. (6)



2006-2007 Yellowjacket Players and Coaches

2006-2007 Lady Yellowjackets Numerical Roster

No.	Name	Ht.	Pos.	Yr.	Hometown/Previous School
11	Jennifer Skrifvars*	5'9"	G	Sr.	Brea, CA/Cal State-San Bernardino
13	Alira Carpenter	5'8"	G	So.	Lewistown, MT/Fergus County HS
14	Jetton Meadors	5'8"	G	So.	Billings, MT/Senior HS
21	Rachel Hansen	5'9"	G	Fr.	Lolo, MT/Big Sky HS
22	Shantell Marquis	5'10"	G	Fr.	Cascade, MT/C.M. Russell HS
25	Dani Henderson	6'0"	F	Fr.	Reed point, MT/Reed Point HS
33	Kayla McPherson	5'11"	F	So.	Glendive, MT/Dawson County HS
41	Jen Smith	5'10"	F	So.	Belgrade, MT/Belgrade HS
50	Michelle Lieber*	6'0"	F	Sr.	Gillette, WY/Univ. of Wyoming
52	Laura Beach	6'2"	C	Fr.	Baker, MT/Baker HS
RS	Mandy Jacobs	5'10"	F	Fr.	Shepherd, MT/Shepherd HS

*Denotes Team Captain

Head Coach: Kevin Woodin (3rd Season)

Assistant Coaches: Natalie Visger (1st Season), Darryl Helmer (3rd Season)



Kevin Woodin (3rd year):

Woodin led the Yellowjackets to an 18-9 record overall for the 2005-2006 season and was 9-3 in the Heartland Conference.

That record earned the Jackets the Heartland Conference Co-Champion title for 2006. In his two-year tenure at Montana State-Billings, Woodin has compiled a 39-16 record for a .709 winning percentage. In his first season at the helm, Woodin guided the Lady Jackets to the NCAA West Region Tournament. The Libby, Montana native holds degrees from Carroll College and Seattle Pacific University.

Current Career Highs for the 2006-2007 Lady Yellowjackets

#11 Jennifer Skrifvars

Points: 13 vs. St. Edward's, 1/7/07

Rebounds: 8 vs. Humboldt St., 12/30/03

3-Point FGs: 2 vs. St. Edward's, 1/7/07

Assists: 6 vs. Western New Mexico, 1/19/05

Steals: 4 vs. Western New Mexico, 1/18/05

#13 Alira Carpenter

Points: 28 vs. MSU-Northern, 12/6/06;

28 vs. St. Edward's, 1/6/07

Rebounds: 6 vs. West Texas A&M, 11/26/05

3-Point FGs: 7 vs. Oklahoma Panhandle, 12/30/06

Assists: 5 vs. Western Oregon, 11/17/06;

5 vs. St. Edward's, 1/6/07

Steals: 3 vs. Rocky Mountain, 11/28/06;

3 vs. MSU-Northern, 12/6/06; 3 vs. Oklahoma Panhandle, 12/30/06

Blocks: 1 four times

#14 Jetton Meadors

Points: 26 vs. Oklahoma Panhandle, 1/12/07

Rebounds: 7 vs. Western Oregon, 11/17/06

3-Point FGs: 6 vs. Oklahoma Panhandle, 1/12/07

Assists: 8 vs. Texas-Permian Basin, 1/15/07

Steals: 4 vs. NW Missouri St., 11/30/06; 4 vs. Texas-Permian Basin, 1/15/07

Blocks: 1 vs. Oklahoma Panhandle, 1/13/07

#21 Rachel Hansen

Points: 9 vs. Rocky Mountain, 11/28/06

Rebounds: 2 vs. TX A&M-Int'l, 1/4/06

3-Point FGs: 2 vs. Rocky Mountain, 11/28/06

Assists: 5 vs. MSU-Northern, 12/6/06

Steals: 2 vs. MSU-Northern, 12/6/06; 2 vs. Texas-Permian Basin, 1/15/07

#22 Shantell Marquis

Points: 13 vs. Mary, 12/15/06;

13 vs. Oklahoma Panhandle, 12/3/06; 13 vs. Oklahoma Panhandle, 1/12/07

Rebounds: 11 vs. Oklahoma Panhandle, 1/13/07

3-Point FGs: 3 vs. Western Oregon, 11/17/06

Assists: 9 vs. TX A&M-Int'l, 1/4/06

Steals: 3 five times

Blocks: 2 vs. St. Martin's, 12/9/06; 2 vs. Oklahoma Panhandle, 1/2/07

#25 Dani Henderson

Points: 15 vs. Western Oregon, 11/17/06

Rebounds: 11 vs. Western Oregon, 11/17/06;

11 vs. St. Martin's, 12/9/06

3-Point FGs: 1 three times

Assists: 6 vs. Oklahoma Panhandle, 1/12/07

Steals: 3 vs. MSU-Northern, 12/6/06

Blocks: 2 vs. Oklahoma Panhandle, 1/13/07

#33 Kayla McPherson

Points: 21 vs. Missouri Southern State, 12/20/06

Rebounds: 6 vs. Oklahoma Panhandle St., 1/7/06

3-Point FGs: 6 vs. Western N.M., 1/4/06

Assists: 2 six times

Steals: 2 vs. Western Oregon, 11/17/06;

2 vs. TX A&M-Int'l, 1/4/06

Blocks: 1 vs. Abilene Christian, 12/20/05;

1 vs. Abilene Christian, 12/19/06

#41 Jen Smith

Points: 18 vs. TX A&M-Int'l, 1/4/06

Rebounds: 9 vs. St. Edward's, 2/10/06; 9 vs. Texas-Permian Basin, 1/15/07

3-Point FGs: 2 vs. Abilene Christian, 12/19/06

Assists: 6 vs. MSU-Northern, 12/6/06

Steals: 3 vs. St. Martin's, 12/16/05

Blocks: 1 vs. Oklahoma Panhandle, 1/13/07

#50 Michelle Lieber

Points: 31 vs. Oklahoma Panhandle, 3/1/06

Rebounds: 19 vs. Oklahoma Panhandle, 3/1/06

3-Point FGs: 1 vs. St. Martin's, 12/16/05

Assists: 4 five times

Steals: 4 vs. Seattle, 11/30/04; 4 vs. Mary, 12/15/06

Blocks: 3 five times

#52 Laura Beach

Points: 2 six times

Rebounds: 2 vs. Western Oregon, 11/17/06;

2 vs. Abilene Christian, 12/19/06

3-Point FGs: n/a

Assists: 1 vs. Oklahoma Panhandle, 12/30/06

Steals: 1 vs. St. Edward's, 1/7/07

Blocks: 2 vs. Oklahoma Panhandle, 12/30/06

The Last Time in Lady Yellowjacket Basketball.....

A player scored over 40 points.....	Feb. 25, 1992 (Sherry McQuinn, 40 vs. Alaska-Fairbanks)
A player scored over 30 points.....	Mar. 1, 2006 (Michelle Lieber, 31 vs. Oklahoma Panhandle)
A player had at least 15 field goals.....	Feb. 19, 2000 (Codi Schmitz vs. Seattle)
A player made seven 3-pointers.....	Dec. 30, 2006 (Alira Carpenter vs. Oklahoma Panhandle)
A player made six 3-pointers.....	Jan. 12, 2007 (Jetton Meadors vs. Oklahoma Panhandle)
A player made five 3-pointers.....	Dec. 6, 2006 (Alira Carpenter vs. MSU-Northern)
A player made at least 15 free throws.....	Nov. 30, 2002 (Natalie Visger vs. St. Martin's)
A player made at least 10 free throws.....	Jan. 7, 2007 (Michelle Lieber, 10/13 vs. St. Edward's)
A player had at least 20 rebounds.....	Dec. 20, 2003 (Robyn Milne, 22 vs. Alaska-Fairbanks)
A player had at least 15 rebounds.....	Nov. 17, 2006 (Michelle Lieber, 16 vs. Western Oregon)
A player had at least 10 assists.....	Feb. 19, 2000 (Deena Bartu, 13 vs. Seattle)
A player had at least 5 assists.....	Jan. 15, 2007 (Jetton Meadors, 8 vs. Texas-Permian Basin)
A player had at least 5 blocked shots.....	Feb. 18, 2006 (Tanya Petersen, 6 vs. St. Mary's)
A player had at least 5 steals.....	Jan. 4, 2007 (Shantell Marquis, 5 vs. TX A&M-Int'l)
A player had a double-double.....	Jan. 13, 2007 (Shantell Marquis, 11pts/11rbs vs. Okla. Panhandle)
The team scored at least 100 points.....	Jan. 18, 2005 (100 vs. Western New Mexico)
The team scored at least 90 points.....	Dec. 16, 2005 (99 vs. St. Martin's)
The team allowed at least 100 points.....	Jan. 22, 1998 (102 by Seattle Pacific)
The team made at least 40 field goals.....	Feb. 19, 2000 (44 vs. Seattle)
The team shot over 60 % from the field.....	Dec. 2, 2005 (62.1% vs. Metro State)
The team shot over 50% from the field.....	Jan. 15, 2007 (50.0% vs. Texas-Permian Basin)
The team made at least 15 3-pointers.....	Dec. 16, 2005 (17 vs. St. Martin's)
The team made at least 10 3-pointers.....	Jan. 12, 2007 (10 vs. Oklahoma Panhandle)
The team made at least 30 free throws.....	Jan. 7, 2007 (31 vs. St. Edward's)
The team made at least 25 free throws.....	Dec. 9, 2006 (25 vs. St. Martin's)
The team had at least 70 rebounds.....	Dec. 15, 1983 (74 vs. Great Falls)
The team had at least 60 rebounds.....	Nov. 17, 2006 (64 vs. Western Oregon)
The team had at least 40 assists.....	Nov. 22, 1983 (40 vs. Rocky Mountain)
The team had at least 30 assists.....	Dec. 16, 2005 (30 vs. St. Martin's)
The team had at least 25 assists.....	Jan. 15, 2007 (29 vs. Texas-Permian Basin)
The team had at least 20 assists.....	Jan. 4, 2007 (21 vs. TX A&M-Int'l)
The team had at least 10 blocked shots.....	Jan. 3, 2005 (10 vs. Northwest Nazarene)
The team had at least 5 blocked shots.....	Jan.13, 2007 (5 vs. Oklahoma Panhandle)
The team had at least 20 steals.....	Feb. 14, 1998 (20 vs. Montana Tech)
The team had at least 15 steals.....	Jan. 4, 2007 (17 vs. TX A&M-Int'l)



#11 Skrifvars



#13 Carpenter



#14 Meadors



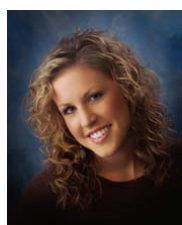
#21 Hansen



#22 Marquis



#25 Henderson



#30 Jacobs



#33 McPherson



#41 Smith



#50 Lieber



#52 Beach



06-07 Yellowjacket Basketball
Mont. St.-Billings Combined Team Statistics (as of Jan 15, 2007)
All games

RECORD:	OVERALL	HOME	AWAY	NEUTRAL
ALL GAMES.....	(13-4)	(8-1)	(3-3)	(2-0)
CONFERENCE.....	(2-1)	(2-0)	(0-1)	(0-0)
NON-CONFERENCE.....	(11-3)	(6-1)	(3-2)	(2-0)

## Player	GP-GS	Min--Avg	---TOTAL---		---3-PTS---		FT-FTA	Pct	---REBOUNDS---				PF	FO	A	TO	Blk	Stl	Pts	Avg
			FG-FGA	Pct	3FG-FGA	Pct			Off	Def	Tot	Avg								
11 Jennifer Skrifvars.	17-1	236 13.9	9-36	.250	2-12	.167	12-20	.600	11	24	35	2.1	15	0	22	14	1	7	32	1.9
13 Alira Carpenter....	17-17	507 29.8	105-234	.449	50-105	.476	32-38	.842	18	29	47	2.8	33	0	48	34	1	18	292	17.2
14 Jetton Meadors.....	17-16	444 26.1	49-124	.395	26-63	.413	30-36	.833	13	33	46	2.7	21	0	68	52	1	22	154	9.1
21 Rachel Hansen.....	17-0	184 10.8	11-33	.333	4-15	.267	3-5	.600	0	8	8	0.5	12	0	22	22	0	7	29	1.7
22 Shantell Marquis...	17-14	417 24.5	45-116	.388	8-28	.286	20-35	.571	14	69	83	4.9	34	1	52	53	8	36	118	6.9
25 Dani Henderson.....	17-14	379 22.3	36-83	.434	4-13	.308	30-37	.811	36	56	92	5.4	36	0	25	30	7	16	106	6.2
33 Kayla McPherson....	17-3	326 19.2	60-141	.426	40-100	.400	19-21	.905	6	27	33	1.9	9	0	14	18	1	9	179	10.5
41 Jen Smith.....	17-3	353 20.8	49-119	.412	7-26	.269	32-47	.681	24	41	65	3.8	29	0	22	29	1	6	137	8.1
50 Michelle Lieber....	17-17	502 29.5	86-128	.672	0-1	.000	91-117	.778	60	85	145	8.5	57	2	24	30	11	14	263	15.5
52 Laura Beach.....	12-0	53 4.4	3-16	.188	0-0	.000	6-10	.600	5	5	10	0.8	6	0	1	4	2	1	12	1.0
TEAM.....										27	36	63	3.7	0		3				
Total.....	17	3401	453-1030	.440	141-363	.388	275-366	.751	214	413	627	36.9	252	3	298	289	33	136	1322	77.8
Opponents.....	17	3400	431-1056	.408	110-327	.336	183-259	.707	241	412	653	38.4	310	-	278	342	52	131	1155	67.9

TEAM STATISTICS	MSUB	OPP	DATE	OPPONENT	W/L	SCORE	ATTEND
SCORING.....	1322	1155	11/17/06	WESTERN OREGON	W	77-62	317
Points per game.....	77.8	67.9	11/18/06	NORTH DAKOTA	L	62-71	334
Scoring margin.....	+9.8	-	11/28/06	ROCKY MOUNTAIN	W	85-69	227
FIELD GOALS-ATT.....	453-1030	431-1056	11/30/06	at NW Missouri State	L	82-95	521
Field goal pct.....	.440	.408	12/02/06	at Missouri Western	L	56-75	1521
3 POINT FG-ATT.....	141-363	110-327	12/6/06	MONT. ST.-NORTHERN	W	80-67	167
3-point FG pct.....	.388	.336	12/9/06	at Saint Martin's University	W	84-68	147
3-pt FG made per game..	8.3	6.5	12/15/06	UNIV. OF MARY	W	69-63	327
FREE THROWS-ATT.....	275-366	183-259	12/19/06	vs Abilene Christian	W	86-61	68
Free throw pct.....	.751	.707	12/20/06	vs Missouri Southern State	W	78-69	100
REBOUNDS.....	627	653	*12/30/06	OKLA. PANHANDLE ST.	W	84-60	820
Rebounds per game.....	36.9	38.4	01/04/06	TEXAS A&M-INTN'L	W	82-64	312
Rebounding margin.....	-1.5	-	*01/06/07	ST. EDWARD'S	W	76-57	370
ASSISTS.....	298	278	01/07/07	ST. EDWARD'S	W	78-61	316
Assists per game.....	17.5	16.4	*1-12-07	at Panhandle State Univ.	L	82-85	325
TURNOVERS.....	289	342	1-13-07	at Panhandle State Univ.	W	73-66	410
Turnovers per game....	17.0	20.1	01/15-07	at Texas-Permian Basin	W	88-62	-
Turnover margin.....	+3.1	-					
Assist/turnover ratio..	1.0	0.8					
STEALS.....	136	131					
Steals per game.....	8.0	7.7					
BLOCKS.....	33	52					
Blocks per game.....	1.9	3.1					
WINNING STREAK.....	2	-					
Home win streak.....	7	-					
ATTENDANCE.....	3190	3092					
Home games-Avg/Game....	9-354	6-487					
Neutral site-Avg/Game..	-	2-84					

SCORE BY PERIODS:	1st	2nd	Total
Mont. St.-Billings.....	653	669	- 1322
Opponents.....	504	651	- 1155

06-07 Yellowjacket Basketball
 Mont. St.-Billings Category Leaders (as of Jan 17, 2007)
 All games

FG PERCENTAGE	FG ATT	Pct
Michelle Lieber.....	86 128	.672
Alira Carpenter.....	105 234	.449
Dani Henderson.....	36 83	.434
Kayla McPherson.....	60 141	.426
Jen Smith.....	49 119	.412
Jetton Meadors.....	49 124	.395
Shantell Marquis....	45 116	.388
Rachel Hansen.....	11 33	.333
Jennifer Skrifvars..	9 36	.250
Laura Beach.....	3 16	.188

FIELD GOAL ATTEMPTS	G	Att	Att/G
Alira Carpenter.....	17	234	13.8
Kayla McPherson.....	17	141	8.3
Michelle Lieber.....	17	128	7.5
Jetton Meadors.....	17	124	7.3
Jen Smith.....	17	119	7.0

FIELD GOALS MADE	G	Made	Made/G
Alira Carpenter.....	17	105	6.2
Michelle Lieber.....	17	86	5.1
Kayla McPherson.....	17	60	3.5
Jetton Meadors.....	17	49	2.9
Jen Smith.....	17	49	2.9

3-POINT PERCENTAGE	3FG ATT	Pct
Alira Carpenter.....	50 105	.476
Jetton Meadors.....	26 63	.413
Kayla McPherson.....	40 100	.400
Dani Henderson.....	4 13	.308
Shantell Marquis....	8 28	.286
Jen Smith.....	7 26	.269
Rachel Hansen.....	4 15	.267
Jennifer Skrifvars..	2 12	.167
Michelle Lieber.....	0 1	.000

3-POINT FG ATTEMPTS	G	Att	Att/G
Alira Carpenter.....	17	105	6.2
Kayla McPherson.....	17	100	5.9
Jetton Meadors.....	17	63	3.7
Shantell Marquis....	17	28	1.6
Jen Smith.....	17	26	1.5

3-POINT FGS MADE	G	Made	Made/G
Alira Carpenter.....	17	50	2.9
Kayla McPherson.....	17	40	2.4
Jetton Meadors.....	17	26	1.5
Shantell Marquis....	17	8	0.5
Jen Smith.....	17	7	0.4

FT PERCENTAGE	FT ATT	Pct
Kayla McPherson.....	19 21	.905
Alira Carpenter.....	32 38	.842
Jetton Meadors.....	30 36	.833
Dani Henderson.....	30 37	.811
Michelle Lieber.....	91 117	.778
Jen Smith.....	32 47	.681
Rachel Hansen.....	3 5	.600
Laura Beach.....	6 10	.600
Jennifer Skrifvars..	12 20	.600
Shantell Marquis....	20 35	.571

FREE THROW ATTEMPTS	G	Att	Att/G
Michelle Lieber.....	17	117	6.9
Jen Smith.....	17	47	2.8
Alira Carpenter.....	17	38	2.2
Dani Henderson.....	17	37	2.2
Jetton Meadors.....	17	36	2.1

FREE THROWS MADE	G	Made	Made/G
Michelle Lieber.....	17	91	5.4
Jen Smith.....	17	32	1.9
Alira Carpenter.....	17	32	1.9
Dani Henderson.....	17	30	1.8
Jetton Meadors.....	17	30	1.8

POINTS	G	Pts	Pts/G
Alira Carpenter.....	17	292	17.2
Michelle Lieber.....	17	263	15.5
Kayla McPherson.....	17	179	10.5
Jetton Meadors.....	17	154	9.1
Jen Smith.....	17	137	8.1
Shantell Marquis....	17	118	6.9
Dani Henderson.....	17	106	6.2
Jennifer Skrifvars..	17	32	1.9
Rachel Hansen.....	17	29	1.7
Laura Beach.....	12	12	1.0

SCORING AVERAGE	G	Pts	Avg/G
Alira Carpenter.....	17	292	17.2
Michelle Lieber.....	17	263	15.5
Kayla McPherson.....	17	179	10.5
Jetton Meadors.....	17	154	9.1
Jen Smith.....	17	137	8.1
Shantell Marquis....	17	118	6.9
Dani Henderson.....	17	106	6.2
Jennifer Skrifvars..	17	32	1.9
Rachel Hansen.....	17	29	1.7
Laura Beach.....	12	12	1.0
TEAM.....	17	0	0.0

06-07 Yellowjacket Basketball
 Mont. St.-Billings Category Leaders (as of Jan 17, 2007)
 All games

REBOUNDS	G	Reb	Reb/G
Michelle Lieber.....	17	145	8.5
Dani Henderson.....	17	92	5.4
Shantell Marquis.....	17	83	4.9
Jen Smith.....	17	65	3.8
Alira Carpenter.....	17	47	2.8

REBOUND AVERAGE	G	Reb	Avg/G
Michelle Lieber.....	17	145	8.5
Dani Henderson.....	17	92	5.4
Shantell Marquis.....	17	83	4.9
Jen Smith.....	17	65	3.8
Alira Carpenter.....	17	47	2.8

OFFENSIVE REBOUNDS	G	No.	Avg/G
Michelle Lieber.....	17	60	3.5
Dani Henderson.....	17	36	2.1
Jen Smith.....	17	24	1.4
Alira Carpenter.....	17	18	1.1
Shantell Marquis.....	17	14	0.8

DEFENSIVE REBOUNDS	G	No.	Avg/G
Michelle Lieber.....	17	85	5.0
Shantell Marquis.....	17	69	4.1
Dani Henderson.....	17	56	3.3
Jen Smith.....	17	41	2.4
Jetton Meadors.....	17	33	1.9

FOULS	G	No.	Per/G
Michelle Lieber.....	17	57	3.4
Dani Henderson.....	17	36	2.1
Shantell Marquis.....	17	34	2.0
Alira Carpenter.....	17	33	1.9
Jen Smith.....	17	29	1.7

FOULOUTS	G	No.
Michelle Lieber.....	17	2
Shantell Marquis.....	17	1

ASSISTS	G	No.	A/G
Jetton Meadors.....	17	68	4.0
Shantell Marquis.....	17	52	3.1
Alira Carpenter.....	17	48	2.8
Dani Henderson.....	17	25	1.5
Michelle Lieber.....	17	24	1.4

STEALS	G	No.	S/G
Shantell Marquis.....	17	36	2.1
Jetton Meadors.....	17	22	1.3
Alira Carpenter.....	17	18	1.1
Dani Henderson.....	17	16	0.9
Michelle Lieber.....	17	14	0.8

BLOCKED SHOTS	G	No.	Blk/G
Michelle Lieber.....	17	11	0.6
Shantell Marquis.....	17	8	0.5
Dani Henderson.....	17	7	0.4
Laura Beach.....	12	2	0.2
Jetton Meadors.....	17	1	0.1
Jen Smith.....	17	1	0.1
Alira Carpenter.....	17	1	0.1
Kayla McPherson.....	17	1	0.1
Jennifer Skrifvars..	17	1	0.1

MINUTES	G	No.	Min/G
Alira Carpenter.....	17	507	29.8
Michelle Lieber.....	17	502	29.5
Jetton Meadors.....	17	444	26.1
Shantell Marquis.....	17	417	24.5
Dani Henderson.....	17	379	22.3

TURNOVERS	G	No.	TO/G
Shantell Marquis.....	17	53	3.1
Jetton Meadors.....	17	52	3.1
Alira Carpenter.....	17	34	2.0
Dani Henderson.....	17	30	1.8
Michelle Lieber.....	17	30	1.8