

2020 - 2021

# HOUSING & RESIDENCE LIFE GUIDE

Apply for on campus housing at: [msubillings.edu/reslife](https://msubillings.edu/reslife)



montana state university  
**BILLINGS**





## THE ON CAMPUS EXPERIENCE

### Wi-Fi Service

Hard wired and wireless high speed internet service in each room along with the common areas on the floors and the main lobby.

### Computer Lab

Each residence hall has a computer lab with free printing and a dedicated space for studying.

### Laundry

Use your U-Card or quarters to use washing machines and dryers located on each floor. Vending machines can also be found in each laundry room.

### Lounge Area

Each floor has a lounge area with couches, chairs, a table, outdoor balcony, and a television with cable.

### Kitchenette

Feel like cooking? Each floor has a kitchen including a sink, microwave, stove, and oven for meal prepping.

### Bath and Shower

A full restroom and shower facility with private stalls placed on each wing of every floor.

### Adjustable Bed

Rooms are furnished with an adjustable bed that lifts 33¾ inches off the ground for prime storage space.

### Ice Machines

Ice machines available in the main lobbies of each hall.

### Parking

Parking available to students with easy and quick access to each residence hall.

### Housing During Breaks

Housing during the winter and summer breaks is available to students. Though residence halls officially close during those times, students can stay for a fee. The Residence Halls remain open during Thanksgiving and Spring Breaks at no additional costs. Dining Services has limited options during all breaks.

### Entertainment

MSUB students receive free entry into our student activities and events including concerts, comedians, and other live entertainment, sporting events, and art exhibits.

### Employment

There are several departments on campus looking for amazing students to join their team as student employees. Billings is a large community full of economic opportunities for part-time work, internships, and volunteer experiences.

### Student Organizations

We have a wide range of student organizations and clubs which include academics, arts, supportive services, student government, culture & religion, recreation, and more.



## WELCOME

Students who live on campus experience our connected, secure, and supportive community. Not only is it convenient and affordable, but it is proven that students who live on campus are more successful academically. For many students, this is where lifelong friendships and memories are made. Students who live on campus meet new people, attend social and educational programs, engage in campus employment opportunities, access convenient dining options, and live in close proximity to classes, campus services, and recreational opportunities.

Our online application is now open at [www.msubillings.edu/reslife](http://www.msubillings.edu/reslife). Here, you will apply for your room and fill out a roommate matching questionnaire or choose your own roommate. **First time Freshmen students under age 21 are required to live on campus for their first year of school.**

## CONVENIENCE

Living on campus will put you in the center of student life and academics. Trust us, it's an experience you won't want to miss. Your time and energy should go towards your school work and extracurricular activities, not towards commuting, monthly bills, and grocery shopping. Living in the residence halls isn't just a place to stay, but it is your all access pass to the resources you'll need to succeed.

## FALL SEMESTER MOVE-IN DATES

Halls Open: Saturday, August 15, 2020

Halls Close: Wed., November 25, 2020 at 5:00 PM

## SPRING SEMESTER MOVE-IN DATES

Halls Open: Sunday, January 17, 2021 at 9:00 AM

Halls Close: Friday, May 7, 2021 at 12:00 PM

**PRIORITY APPLICATION DEADLINE IS FRIDAY, MAY 1, 2020**



## BE A LEADER

Leadership opportunities include running for an elected position within ASMSUB (student government), attending leadership seminars and workshops, applying for our specialized LEAD program, or working your way up to a student organization's leadership position.

## ATHLETICS

Cheer on your fellow Yellowjackets in one of the 17 NCAA Division II sports teams. We have the most sports teams in the state!

## STUDENT WELLNESS

We're here to help students thrive and succeed! We provide medical care, mental health counseling, violence prevention, advocacy services and a wellness program to help you make the most of your time at MSUB. Students can utilize the Health Service just across from Petro Residence Hall Lobby.

## TUTORING AND MENTORING

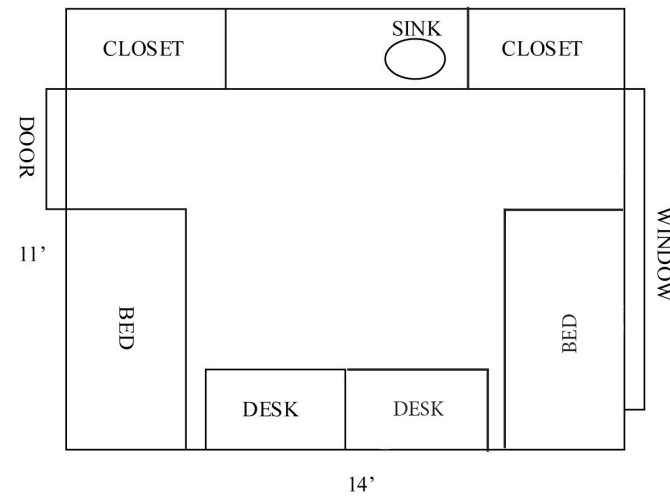
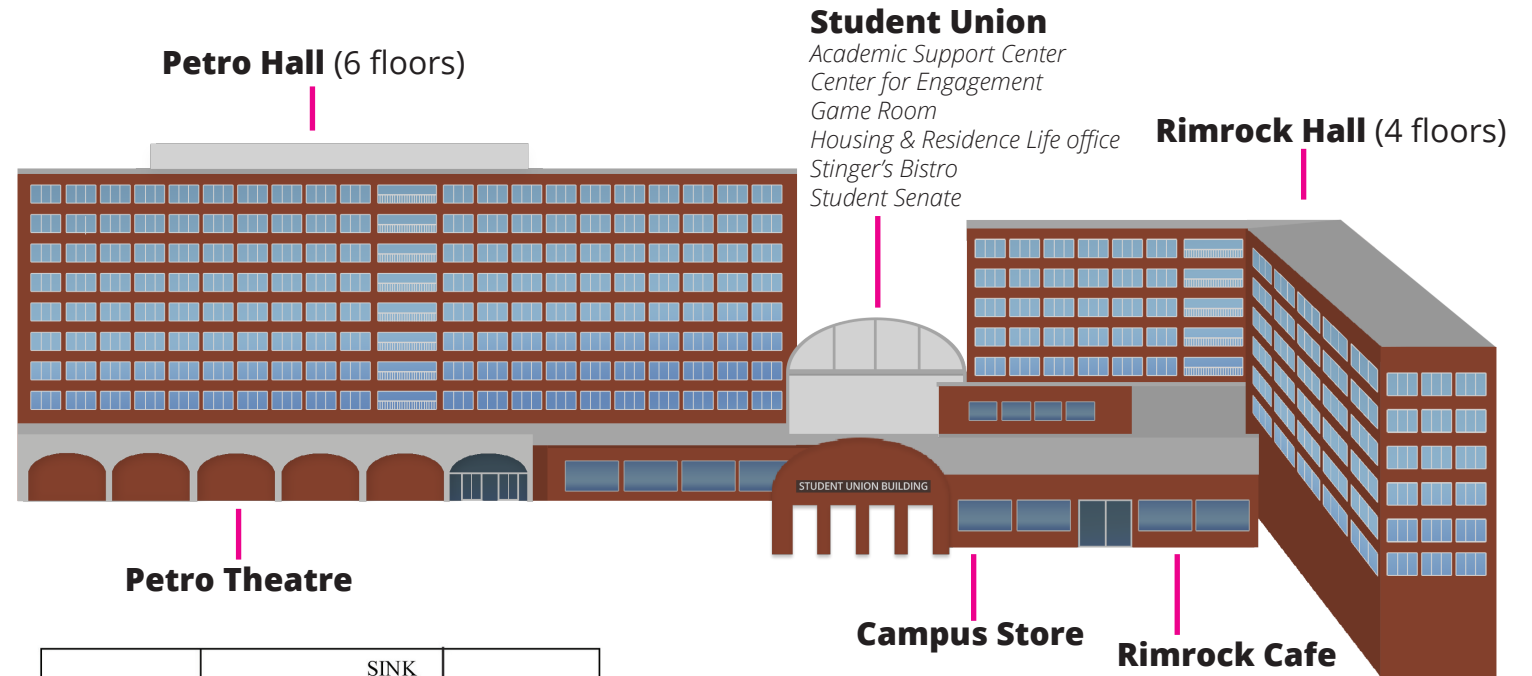
Located in the Student Union Building, you don't have to go outside to take advantage of our Academic Support Center. Get tutoring assistance to get you through a challenging course, take advantage of other workshops and resources, or just settle in to study.

## HONORS

Our honors program provides intellectually stimulating classes and career building opportunities for those who apply. Honors Students receive special advising and mentorship throughout their education at MSU Billings.

## RESIDENCE HALL ASSOCIATION (RHA)

RHA's main focus is social and educational programming for residents, providing ample opportunities for interaction and involvement.



**How much does living on campus cost?**  
Semester Rates for 2020 - 2021  
Double room - \$1780  
Single room - \$2172

Rimrock Hall and Petro Hall have very similar room styles that are 11 by 14 feet. Each room includes two desks, built in shelves, two closets, a sink with a counter and mirror, curtains, wireless & hard wired internet access, and two twin adjustable beds with bunking abilities. Petro has a dedicated workout space on the main floor. Rimrock and Petro Hall have new and innovative classrooms with a study space and updated technology.



*Housing Hold*  
Students who fit the criteria for our live on requirement must complete a housing application or submit an exemption, which must be approved. Failure to complete these steps will result in a registration hold on students' accounts.





**Petro Hall**



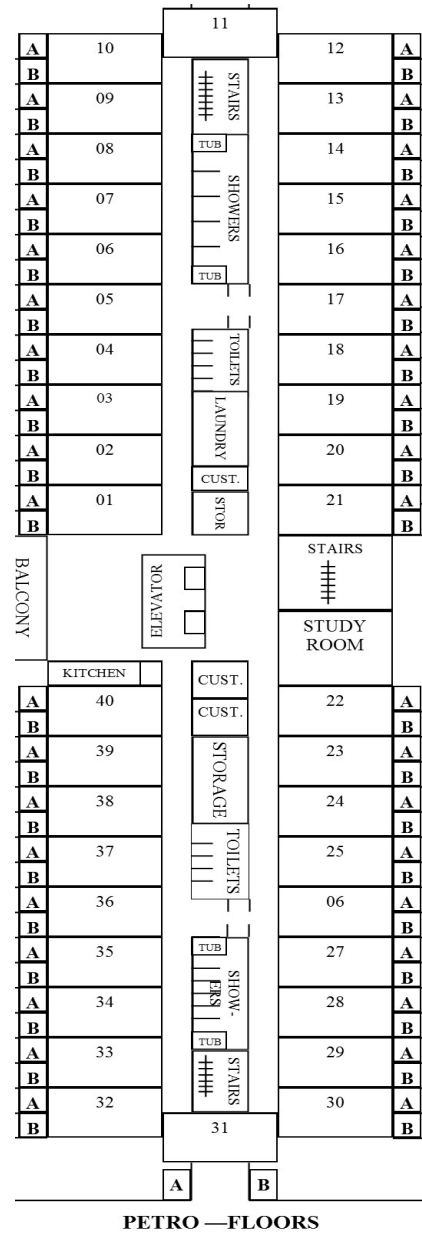
**Rimrock Hall**



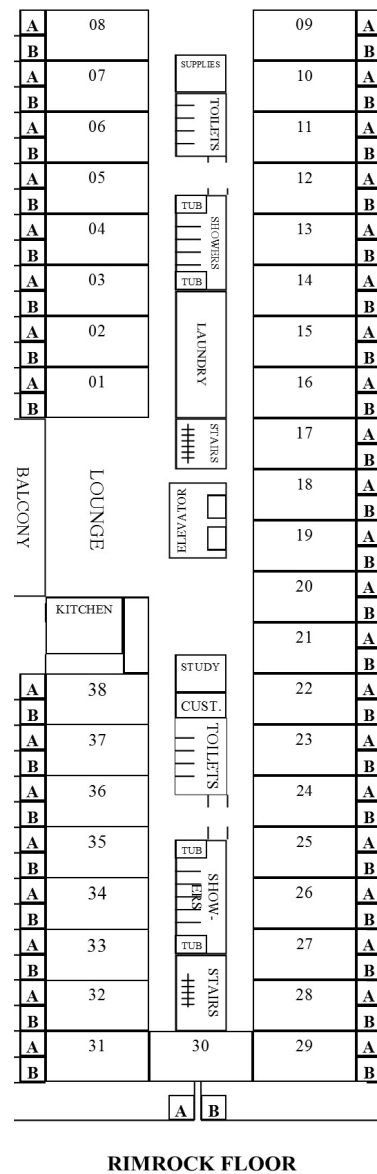
**Student Union Building**



## Petro Hall (6 floors)



## Rimrock Hall (4 floors)



## LIVING AND DINING

### What is a Block Meal Plan?

A type of meal plan that gives you a set number of meals to eat within a given semester. Students must use meals within the semester and meals will not carry over to the next semester.

### What is a Meals Per Week Plan?

A type of meal plan that provides a set number of meals within a week. Students must use the defined number of meals within the given week, and the meals will not carry over to another week. The Stinger and Buzz Monday-Friday meal plans are per week plans

### What are Dining Dollars?

Money put on your U-Card to use for coffee and other grab-and-go items from any MSU Billings dining location on the University and City College campus. Your dining dollar balance will carry over from the Fall to Spring semester, but needs to be used by the end of Spring semester. Dining dollars are a part of all of our residence halls meal plans.

### U-Card

Your U-Card is not only your university identification, but also your lunch ticket, library card, and more. Deposit money on your card to use around campus for printing, purchasing gear at Jackets and Company Campus Store, buying food and coffee at any of the campus food service locations, and vending machines. *Students will learn how to add money to their U-Card at orientation.*

### City College Dining

At City College, dining is a-la-carte, and students can select from a variety of meal options. Students can still use a meal from their plan when they eat at City College, rather than using dining dollars or paying in cash.

### How do I know what meal plan is best for me?

Consider your current eating habits. Will you want three full meals per day, or will you want to grab a snack for some? Do you anticipate working in the evening? Dining Services is willing to provide a sack meal for students who might miss an evening meal. Just ask.

### Double and Single Rooms

Every room is built the same that means single rooms are the same size and include everything a double room does. Single rooms are assigned based on space and availability.

### High GPA Award

Residents who are MSU Billings students who live in the halls for at least one semester and maintain a 3.75 cumulative grade point average are eligible to receive a single room for the price of a double or \$150 on their general U-Card and remain in a double.

### Social & ResNet Fees

Every semester, students pay a \$15 Social Fee and a \$75 ResNet Fee. The \$15 Social Fee goes into the programming budget for planned events during the academic year in the residence halls. The \$75 ResNet fee goes to continued support, maintenance, and improvements for our technology and Wi-Fi service in the residence halls.

### Extended Stay Program

Need a room in the residence halls for a night, a week or longer? Extended Stay offers a new flexible option, especially for commuter students during the winter months. Spend a night (or more as you wish) in the residence halls. (Note: A meal plan is not required for this option.)

- Daily rate - \$34
- Weekly rate -\$200

## MEAL PLANS COST PER SEMESTER

### Stinger - \$1840

This plan provides 19 meals per week in our all-you-care-to-eat Rimrock Café plus \$50 in Dining Dollars.

### Buzz - \$1840 Monday-Friday

This plan provides three meals per day, Monday through Friday in our all-you-care-to-eat Rimrock Café plus \$275 in Dining Dollars.

### Hive - \$1715

This plan is a block meal plan, providing 160 meals per semester in our all-you-care-to-eat Rimrock Café plus \$300 in Dining Dollars.

### Nest - \$1665

This plan is a block meal plan, providing 125 meals per semester in our all-you-care-to-eat Rimrock Café plus \$400 in Dining Dollars.



**For more information, contact the Office of Housing & Residence Life**  
**1-800-565-6782 ext. 2333**  
**[msubillings.edu/reslife](https://msubillings.edu/reslife)**  
**[housing@msubillings.edu](mailto:housing@msubillings.edu)**  
**Student Union Building, 225**

Montana State University Billings | 1500 University Drive | Billings, Montana 59101-0245

Find us on:



Montana State University Billings has a policy of nondiscrimination in employment practices and in admissions, access to and conduct of educational programs and activities pursuant to title VII of the Civil Rights Act, Title IX of the Education Amendments, Section 504 of the Rehabilitation Act, Executive Order 11246 as amended, Vietnam era and Disabled Veterans Act, as amended, and the Montana State Human Rights Act. Any person with disabilities concerned about accessibility and/or accommodation issues should contact Disability Support Services (406) 657-2283.

To access the annual campus crime report, please visit: [msubillings.edu/security](https://msubillings.edu/security)  
To access consumer information visit: [msubillings.edu/finaid/Consumer\\_Information.htm](https://msubillings.edu/finaid/Consumer_Information.htm)